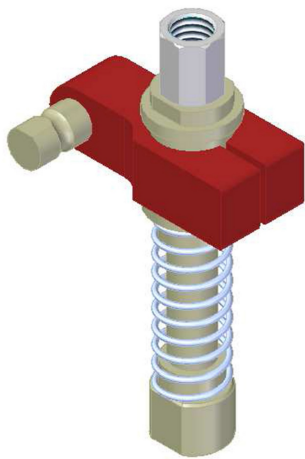


Centralized vacuum connection with level compensator, G threads, Lock pin 16, Left hand connection

Item number: X6010



- Connects centralized vacuum to suction cup.
- Available in lock pin 16, 19 or ball joint mountings, industry standard.
- Available with level compensator to compensate for differences in level of object.

Technical data

Description	Unit	Value
Material	-	Al, CuZn, Nitrile (NBR), Polyurethane (PU), SS, Steel
Action range	in	1.97
Load, vertical, max.	lbf	157.37
Temperature, max.	°F	158.0
Temperature, min.	°F	-22.0
Weight, max.	oz	47.062
Weight, min.	oz	42.25
Life span (at max load)	cycles	10000000
Volume, internal (level compensator)	in³	0.84
Action range	°	0-360
Action range/Stroke	in	1.97
Spring force, max.	lbf	14.99

