

Datasheet

Vacuum pump MINI X20L, conn. C, NBR seals, non-return valve

Item number: X20A5-CNA



- Extra vacuum level to 27.9 -inHg
- Small size and low weight
- Use in tightly sealed or non-porous applications

Technical data

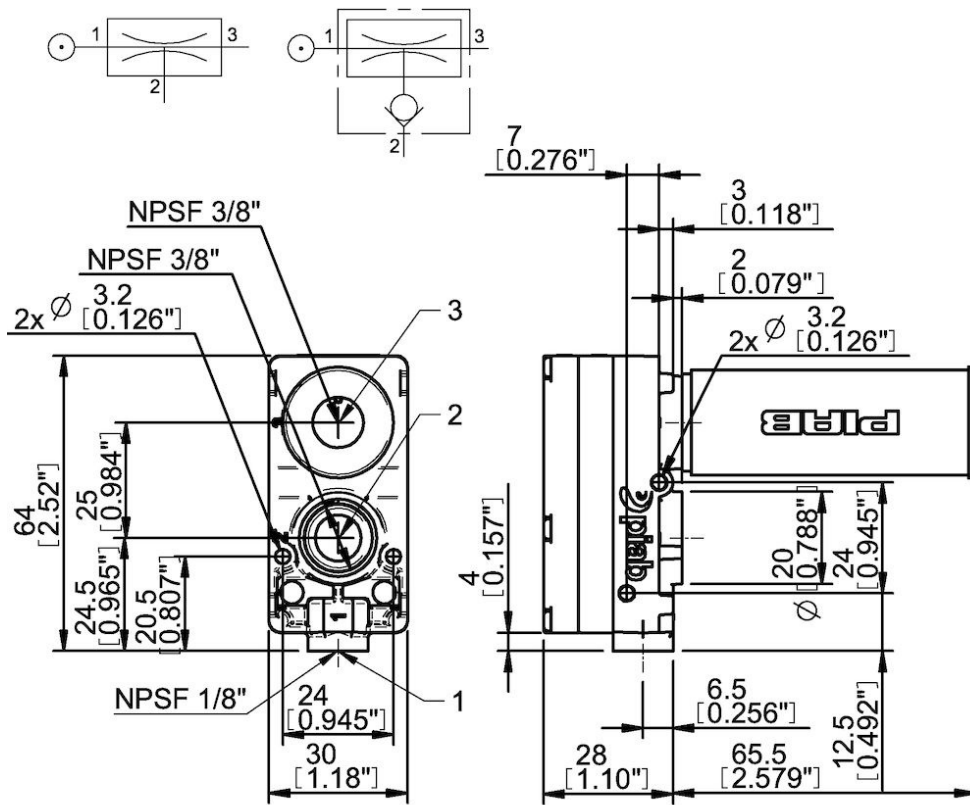
Description	Unit	Value
Material	-	ABS, AI, Nitrile (NBR), PA, POM, SS
Temperature, max.	°F	176.0
Temperature, min.	°F	-4.0
Weight, max.	oz	2.61
Weight, min.	oz	2.12
Feed pressure, max.	psi	0.10
Noise level, max.	dBA	66
Noise level, min.	dBA	62

Performance

Feed pressure psi	Air consumption scfm	Vacuum flow (scfm) at different vacuum levels (-inHg)													Max vacuum psi
		0	2	5	8	11	14	17	20	23	26	29	32	35	
58.0	3.39	0.56	0.30	0.15	0.13	0.11	0.089	0.074	0.050	0	0.030	0.0059	0	0	≥13.48

Feed pressure psi	Air consumption scfm	Evacuation time (s/cf) to reach different vacuum levels (-inHg)												Max vacuum psi	
		2	5	8	11	14	17	20	23	26	28	29	29		29
58.0	3.39	0.016	0.059	0.12	0.19	0.29	0.41	0.56	0.80	1.51	0	0	0	0	≥13.48

Dimensional drawings



Values specified in this datasheet are tested at (unless otherwise stated):

- Room temperature (20°C [68°F] ± 3°C [5.5°F]).
- Standard atmosphere (101.3 [29.9 inHg] ± 1.0 kPa [0.3 inHg]).
- Compressed air quality, DIN ISO 8573-1 class 4.

Accessories

- 32.01.097E | Seal kit MINI 5–28, EPDM
- 32.01.097V | Seal kit MINI 5–28, Viton®

Spare parts

- 32.01.097 | Seal kit MINI 5–28, NBR

Tolerance and accuracy:

- Feed pressure tolerance ±0.02 MPa [2.9 psi]
- Vacuum flow/evacuation time accuracy ±10%.