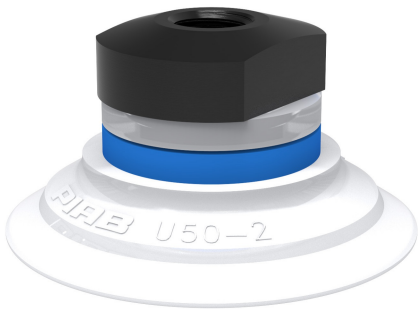


# Suction cup U50-2 Silicone FCM, 1/8" NPSF female, with mesh filter

Item number: U50-2.21.05AG



- The silicone material complies with FDA 21 CFR 177.2600 & EU 1935/2004.
- Suitable for objects with flat or slightly curved surfaces.
- Also used for concave objects.

Technical data

Description	Unit	Value
Suction cup shape	-	Universal
Application	-	Food contact materials (FDA & EU), non-detectable
Suction cup design	-	Round
Characteristics	-	Food contact materials (FDA & EU), non-detectable
Material	-	Silicone (SIL)
Weight, min.	oz	0.35
Suction cup model	-	U
Volume	in <sup>3</sup>	0.73
Height	in	1.043
Outer diameter, min.	in	2.024
Fitting size	-	1/8"
Fitting option	-	Filter mesh
Fitting style	-	Female
Fitting type	-	NPSF-thread
Suction cup model	-	U50-2
Movement, vertical max.	in	0.24
Curve radius, min.	in	1.38

Performance - Lifting forces

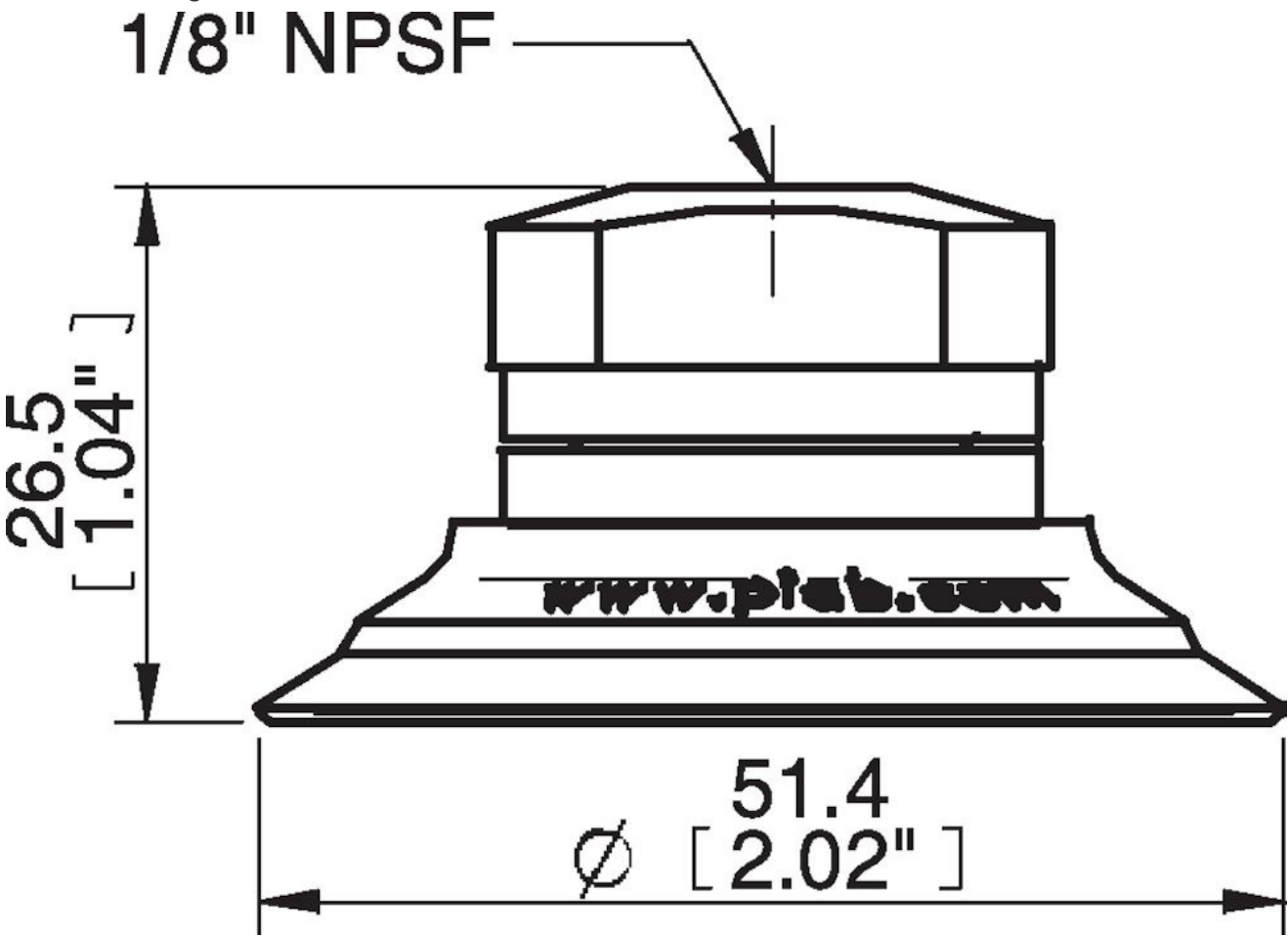
U50-2	Vertical (lb)	Parallel (lb)
5.91 -inHg	7.87	4.50
17.72 -inHg	16.41	8.32
26.58 -inHg	20.68	9.89

<b>Material</b>	
Name	Silicone (SIL FDA) 50° Shore
Color	Transparent
Temperature, min.   °F	-40.0
Temperature max.   °F	392.0
Hardness   °Shore A	50

**Material resistance**

Alcohol	Good
Concentrated acids	Poor
Ethanol	n/a
Hydrolysis	Fair
Methanol	n/a
Oil	Poor
Oxidation	Excellent
Gasoline	Poor
Wear resistance	Good
Weather and ozone	Excellent

**Dimensional drawings**



**Values specified in this data sheet are tested at (unless otherwise stated):**

- Room temperature (20°C [68°F] ± 3°C [5.5°F]).
- Standard atmosphere (101.3 [29.9 inHg] ± 1.0 kPa [0.3 inHg]).
- Relative humidity 20-70%.
- Compressed air quality, DIN ISO 8573-1 class 4.

**Accessories**

05AB | Fitting G1/4" male, 50, with mesh filter  
05AC | Fitting 1/4" NPT male, with mesh filter

**Spare parts**

05AG | Fitting 1/8" NPSF female, 50, with mesh filter

U50-2.21 | Suction cup U50-2 Silicone FCM