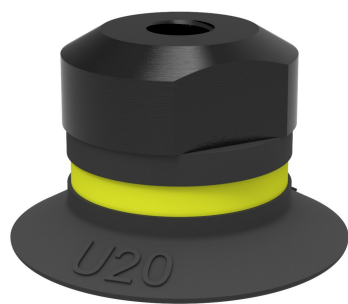


Suction cup U20 Chloroprene, M5 female

Item number: U20.10.02AA

- Suitable for objects with flat or slightly curved surfaces.
- Also used for concave objects.



Technical data

| Description | Unit | Value |
|-------------------------|-----------------|------------------|
| Suction cup shape | - | Universal |
| Application | - | Glass handling |
| Suction cup design | - | Round |
| Characteristics | - | Glass handling |
| Material | - | Chloroprene (CR) |
| Weight, min. | oz | 0.042 |
| Suction cup model | - | U |
| Volume | in ³ | 0.061 |
| Height | in | 0.55 |
| Outer diameter, min. | in | 0.87 |
| Fitting size | - | None |
| Fitting option | - | None |
| Fitting style | - | Female |
| Fitting type | - | M-thread |
| Suction cup model | - | U20 |
| Movement, vertical max. | in | 0.098 |
| Curve radius, min. | in | 0.51 |

Performance - Lifting forces

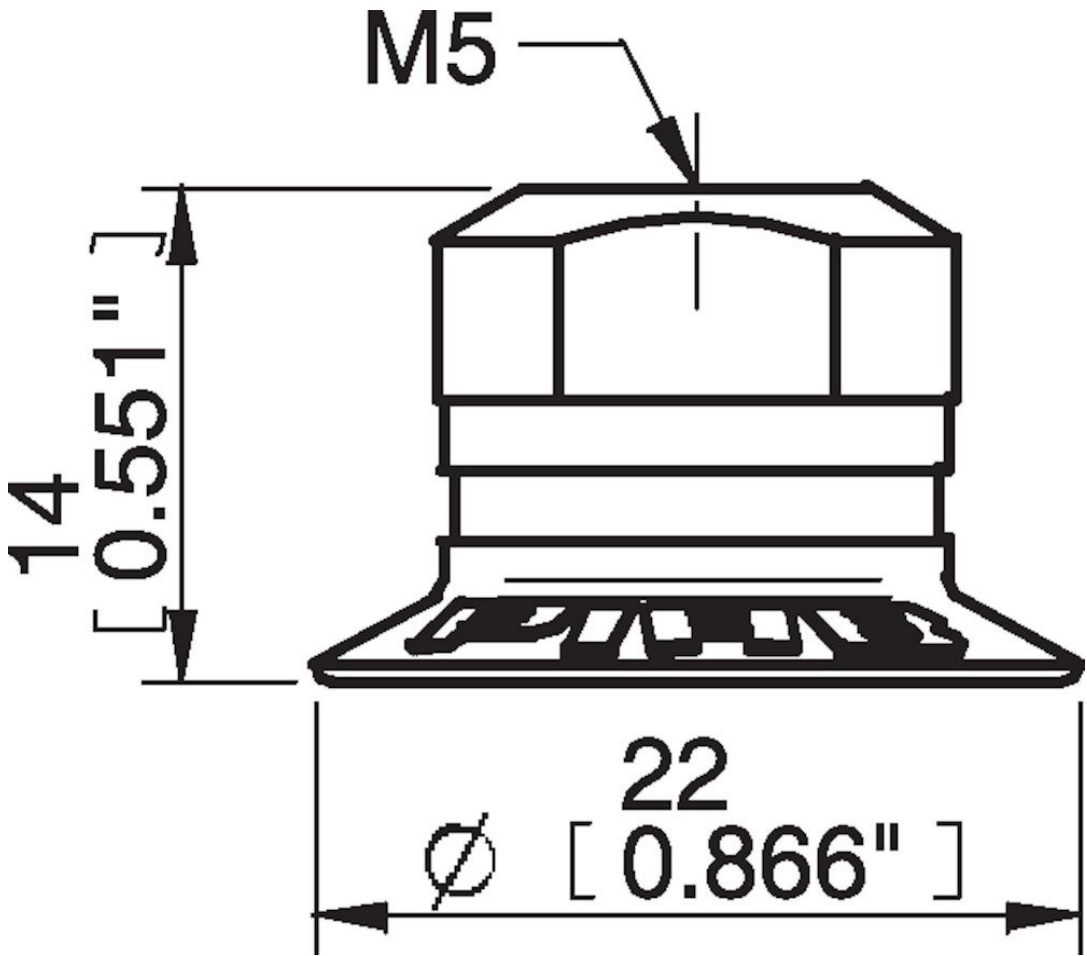
| U20 | Vertical (lb) | Parallel (lb) |
|-------------|---------------|---------------|
| 5.91 -inHg | 1.33 | 1.33 |
| 17.72 -inHg | 2.70 | 1.98 |
| 26.58 -inHg | 3.60 | 2.20 |

| Material | |
|------------------------|------------------------------|
| Name | Chloroprene (CR) 50° Shore A |
| Color | Black |
| Temperature, min. °F | -40.0 |
| Temperature max. °F | 230.0 |
| Hardness °Shore A | 50 |

Material resistance

| | |
|--------------------|-----------|
| Alcohol | Good |
| Concentrated acids | Poor |
| Ethanol | n/a |
| Hydrolysis | Good |
| Methanol | n/a |
| Oil | Fair |
| Oxidation | Good |
| Gasoline | Fair |
| Wear resistance | Excellent |
| Weather and ozone | Good |

Dimensional drawings



Values specified in this data sheet are tested at (unless otherwise stated):

- Room temperature (20°C [68°F] ± 3°C [5.5°F]).
- Standard atmosphere (101.3 [29.9 inHg] ± 1.0 kPa [0.3 inHg]).
- Relative humidity 20-70%.
- Compressed air quality, DIN ISO 8573-1 class 4.

Accessories

02AE | Fitting 5xM5 female

U20.20 | Suction cup U20 Silicone

02AF | Fitting G1/8" male/M5 female, with mesh filter

U20.47 | Suction cup U20 HNBR

02CD | Fitting G1/8" male/M5 female, PA

02AD | Fitting G1/8" male/M5 female

02AB | Fitting G1/8" male, with mesh filter

02AC | Fitting 1/8" NPT male, with mesh filter

02DA | Fitting M5 female, with dual flow control valve

02DC | Fitting 1/8" NPT male, with dual flow control valve

02DD | Fitting G1/8" male/M5 female, with dual flow control valve

02DE | Fitting 5xM5 female, with dual flow control valve

Spare parts

U20.10 | Suction cup U20 Chloroprene

02AA | Fitting M5 female