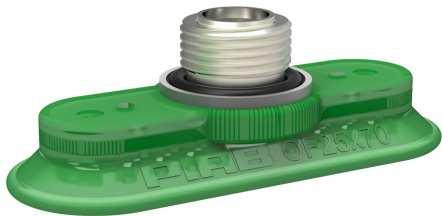


Suction cup OF25x70P Polyurethane 60, G3/8" male

Item number: OF25X70P.5E.G41M



- Suitable for flat and rough surfaces.
- Fair stability and little inherent movement.
- Recommended when the lifting force is parallel to the surface of the object.
- Cleats prevent thin, sensitive objects from being deformed and give extra friction when the lifting force is parallel to the surface of the object.
- DURAFLEX® are suction cups manufactured in a specially developed material that features the elasticity of rubber and wear resistance of polyurethane. The material does not leave any marks on the objects handled.
- Swivel option, prior to the locking operation, for easy positioning of the oval cup.

Technical data

Description	Unit	Value
Suction cup shape	-	Flat
Application	-	Mark Free
Suction cup design	-	Oval
Characteristics	-	Mark free
Material	-	Polyurethane (PU)
Weight, min.	oz	0.67
Suction cup model	-	OF
Volume	in³	0.37
Height	in	0.91
Length	in	2.85
Outer diameter, min.	in	2.85
Fitting size	-	3/8"
Fitting option	-	None
Fitting style	-	Male
Fitting type	-	G-thread
Width	in	1.075
Suction cup model	-	OF25x70P PU60
Movement, vertical max.	in	0.075
Curve radius, min.	in	1.97

Performance - Lifting forces

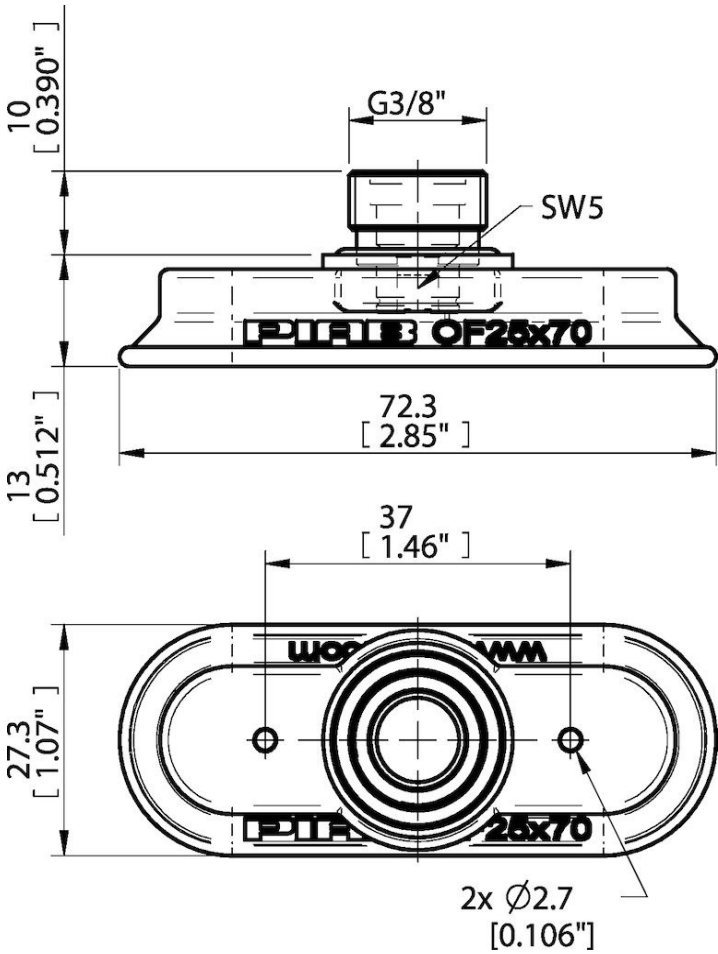
OF25x70P PU60	Vertical (lb)	Parallel (lb)
5.91 -inHg	5.40	9.44
17.72 -inHg	17.31	28.55
26.58 -inHg	26.53	36.19

Material	
Name	Polyurethane (PU60)
Color	Green transparent
Temperature, min. °F	50.0
Temperature max. °F	122.0
Hardness °Shore A	60

Material resistance

Alcohol	n/a
Concentrated acids	Fair
Ethanol	Fair
Hydrolysis	Fair
Methanol	Poor
Oil	Excellent
Oxidation	Poor
Gasoline	Fair
Wear resistance	Excellent
Weather and ozone	Excellent

Dimensional drawings



Values specified in this data sheet are tested at (unless otherwise stated):

- Room temperature (20°C [68°F] ± 3°C [5.5°F]).
- Standard atmosphere (101.3 [29.9 inHg] ± 1.0 kPa [0.3 inHg]).
- Relative humidity 20-70%.
- Compressed air quality, DIN ISO 8573-1 class 4.

Accessories

OF25X70P.5C.G41M | Suction cup OF25x70P Polyurethane 40, G3/8" male