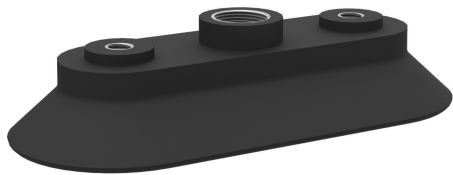


Suction cup OC60x140 Nitrile, G3/8" female

Item number: OC60x140.35.61UA



- Suitable for handling oblong objects with flat or curved surface.
- Good stability and little inherent movement.
- Thick, durable lip.

Technical data

Description	Unit	Value
Suction cup shape	-	Concave
Application	-	Dry sheet metal
Suction cup design	-	Oval
Characteristics	-	Dry sheet metal
Material	-	Nitrile (NBR)
Weight, min.	oz	5.64
Suction cup model	-	OC
Volume	in³	3.17
Height	in	1.18
Length	in	5.43
Outer diameter, min.	in	5.43
Fitting size	-	3/8"
Fitting option	-	None
Fitting style	-	Female
Fitting type	-	G-thread
Width	in	2.40
Fitting material	-	Al
Suction cup model	-	OC60x140
Movement, vertical max.	in	0.30
Curve radius, min.	in	7.87

Performance - Lifting forces

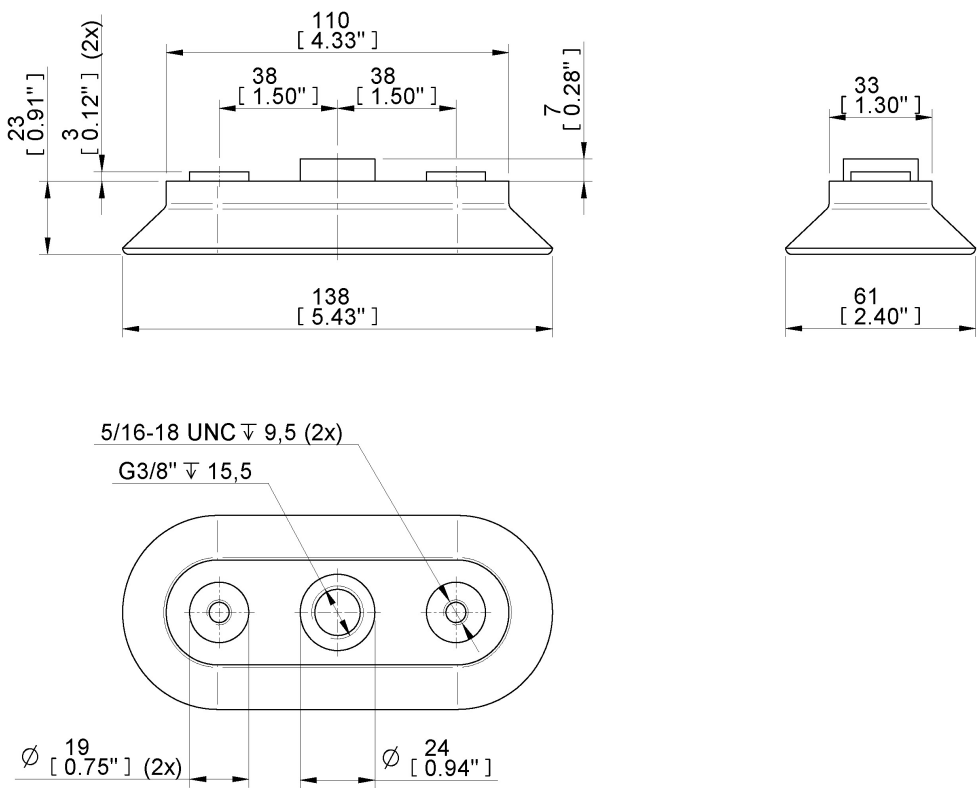
OC60x140	Vertical (lb)	Parallel (lb)
5.91 -inHg	29.67	41.81
17.72 -inHg	83.85	83.85
26.58 -inHg	116.90	114.65

Material	
Name	Nitrile (NBR)
Color	Black
Temperature, min. °F	-4.0
Temperature max. °F	212.0
Hardness °Shore A	50

Material resistance

Alcohol	Good
Concentrated acids	Fair
Ethanol	n/a
Hydrolysis	Good
Methanol	n/a
Oil	Excellent
Oxidation	Good
Gasoline	Good
Wear resistance	Excellent
Weather and ozone	Fair

Dimensional drawings



Values specified in this data sheet are tested at (unless otherwise stated):

- Room temperature (20°C [68°F] ± 3°C [5.5°F]).
- Standard atmosphere (101.3 [29.9 inHg] ± 1.0 kPa [0.3 inHg]).
- Relative humidity 20-70%.
- Compressed air quality, DIN ISO 8573-1 class 4.