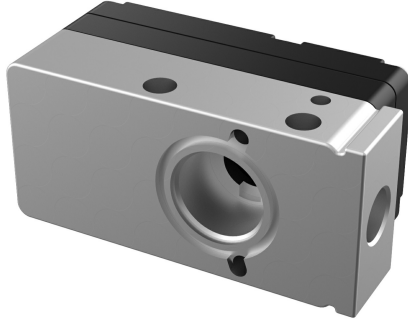


# Datasheet

## Vacuum pump MINI M20L, conn. B1, NBR sealings

Item number: M20A5-B1N



- Medium vacuum levels to 24.8 -inHg
- Small size and low weight
- Operates at 55 psi
- Nitrile (NBR) seals standard

### Technical data

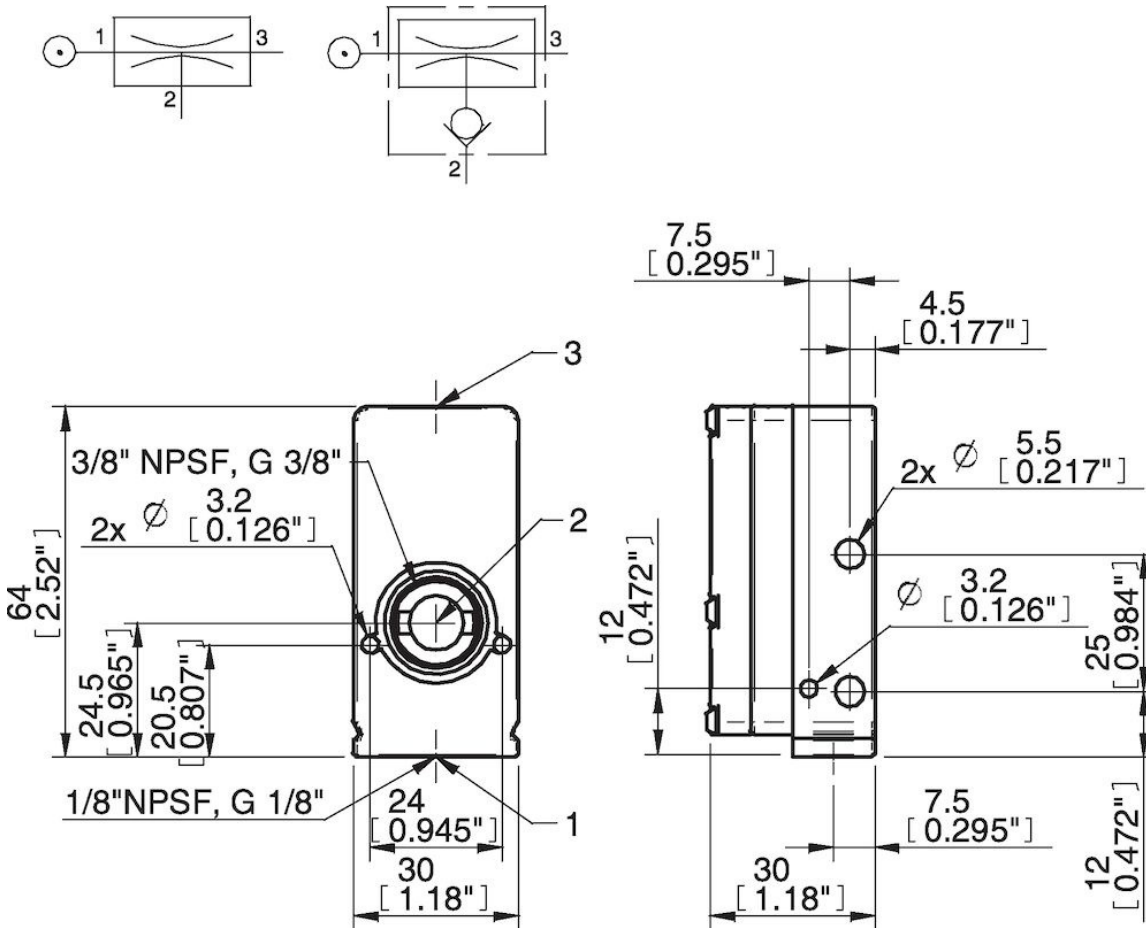
Description	Unit	Value
Material	-	ABS, Al, Nitrile (NBR), PA, POM, SS
Temperature, max.	°F	176.0
Temperature, min.	°F	-4.0
Weight, max.	oz	2.61
Weight, min.	oz	2.12
Feed pressure, max.	psi	0.10
Noise level, max.	dBA	68
Noise level, min.	dBA	57

### Performance

Feed pressure psi	Air consumption scfm	Vacuum flow (scfm) at different vacuum levels (-inHg)													Max vacuum psi
		0	2	5	8	11	14	17	20	23	26	29	32	35	
55.10	3.18	0.59	0.35	0.22	0.20	0.16	0.12	0.097	0.056	0	0.0059	0	0	0	≥11.74
87.0	4.66	0.71	0.50	0.28	0.17	0.14	0.11	0.086	0.056	0	0.018	0	0	0	≥12.18

Feed pressure psi	Air consumption scfm	Evacuation time (s/cf) to reach different vacuum levels (-inHg)													Max vacuum psi
		2	5	8	11	14	17	20	23	26	28	29	29	29	
55.10	3.18	0.015	0.041	0.077	0.12	0.19	0.30	0.50	1.093	0	0	0	0	0	≥11.74
87.0	4.66	0.011	0.030	0.071	0.13	0.20	0.30	0.44	0.74	0	0	0	0	0	≥12.18

## Dimensional drawings



Values specified in this datasheet are tested at (unless otherwise stated):

- Room temperature (20°C [68°F] ± 3°C [5.5°F]).
- Standard atmosphere (101.3 [29.9 inHg] ± 1.0 kPa [0.3 inHg]).
- Compressed air quality, DIN ISO 8573-1 class 4.

Tolerance and accuracy:

- Feed pressure tolerance ±0.02 MPa [2.9 psi]
- Vacuum flow/evacuation time accuracy ±10%.

## Spare parts

- 32.01.097 | Seal kit MINI 5-28, NBR
- 32.01.097E | Seal kit MINI 5-28, EPDM
- 32.01.097V | Seal kit MINI 5-28, Viton®