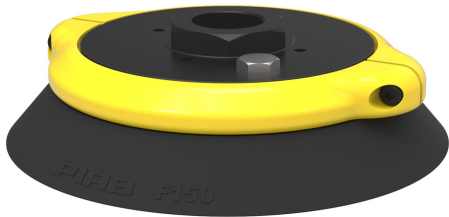


# Suction cup F150 Nitrile-PVC, G3/4" female, clamp ring with mesh filter

Item number: F150.30.15NB



- Suitable for flat objects.
- Good stability and little inherent movement.
- Recommended when the lifting force is parallel to the surface of the object.
- Cleats prevent thin, sensitive objects from being deformed and gives extra friction when the lifting force is parallel.

Technical data

Description	Unit	Value
Suction cup shape	-	Flat
Application	-	Dry sheet metal
Suction cup design	-	Round
Characteristics	-	Dry sheet metal
Material	-	Nitrile-PVC (NPV)
Weight, min.	oz	7.054
Suction cup model	-	F
Volume	in <sup>3</sup>	9.76
Height	in	1.59
Outer diameter, min.	in	5.98
Outer diameter, actuated	in	6.18
Fitting size	-	3/4"
Fitting option	-	Filter mesh
Fitting style	-	Female
Fitting type	-	G-thread
Suction cup model	-	F150
Movement, vertical max.	in	0.24
Curve radius, min.	in	19.68

Performance - Lifting forces

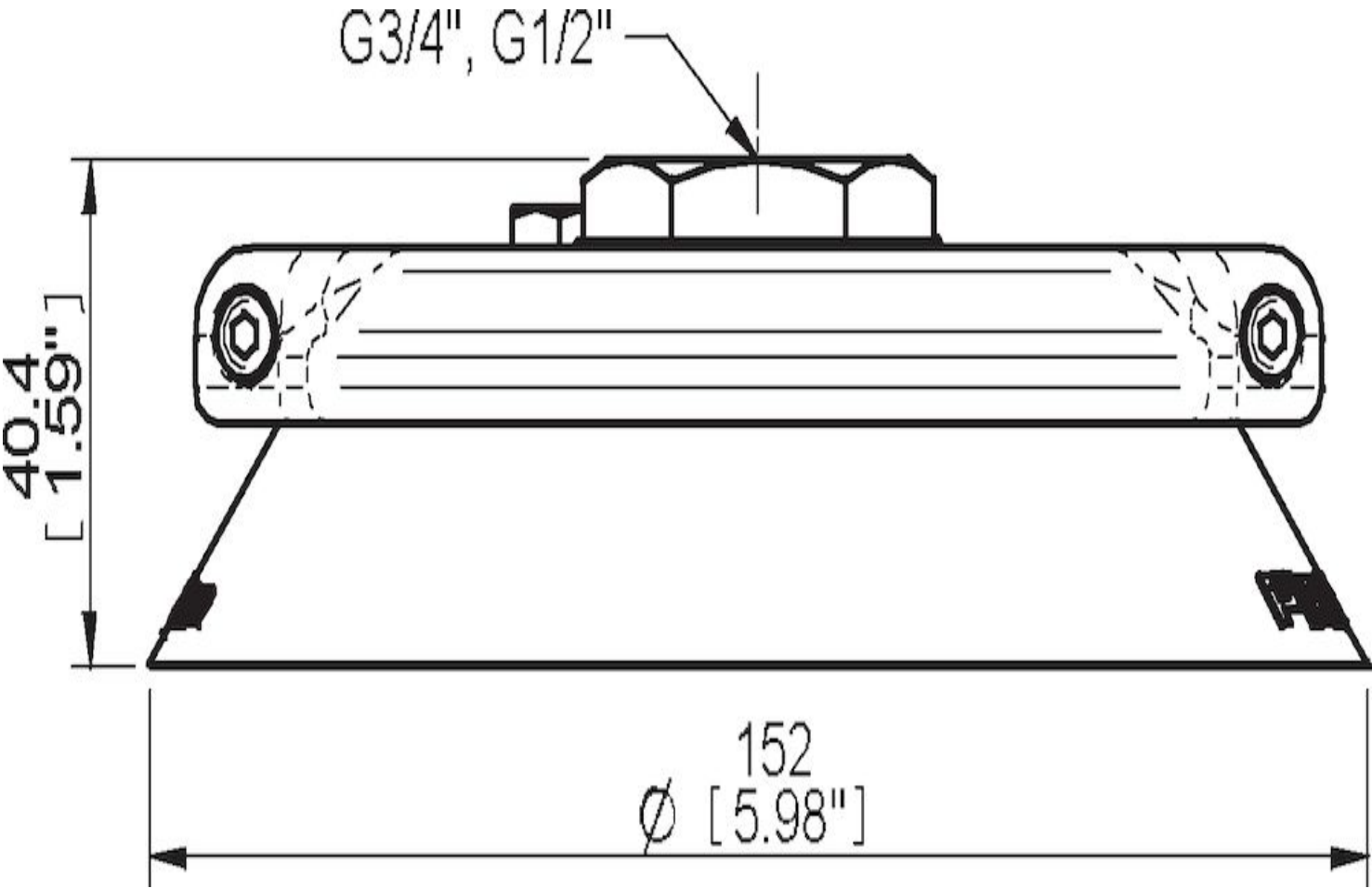
F150	Vertical (lb)	Parallel (lb)
5.91 -inHg	67.44	56.20
17.72 -inHg	191.088	134.89
26.58 -inHg	247.29	179.85

<b>Material</b>	
Name	Nitrile-PVC (NPV)
Color	Black
Temperature, min.   °F	32.0
Temperature max.   °F	194.0
Hardness   °Shore A	50

**Material resistance**

Alcohol	Good
Concentrated acids	Fair
Ethanol	n/a
Hydrolysis	Good
Methanol	n/a
Oil	Excellent
Oxidation	Good
Gasoline	Excellent
Wear resistance	Excellent
Weather and ozone	Good

**Dimensional drawings**



**Values specified in this data sheet are tested at (unless otherwise stated):**

- Room temperature (20°C [68°F] ± 3°C [5.5°F]).
- Standard atmosphere (101.3 [29.9 inHg] ± 1.0 kPa [0.3 inHg]).
- Relative humidity 20-70%.
- Compressed air quality, DIN ISO 8573-1 class 4.

### **Accessories**

15NA | Fitting 150, G1/2" female, with mesh filter

15VA | Fitting 150, G1/2" female, clamp ring with cone valve

F150.30.W | Suction cup F150 Nitrile-PVC with washer

F150.20.W | Suction cup F150 Silicone with washer

F150.20 | Suction cup F150 Silicone

15UA | Fitting G1/2" female Al, with mesh filter

### **Spare parts**

15NB | Fitting 150, G3/4" female, with mesh filter

F150.30 | Suction cup F150 Nitrile-PVC