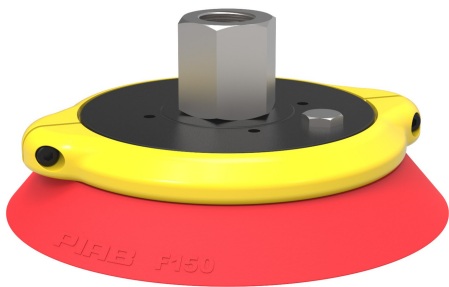


Suction cup F150 Silicone, G1/2" female, clamp ring with cone valve

Item number: F150.20.15VA



- Suitable for flat objects.
- Good stability and little inherent movement.
- Recommended when the lifting force is parallel to the surface of the object.
- Cleats prevent thin, sensitive objects from being deformed and gives extra friction when the lifting force is parallel.

Technical data

| Description | Unit | Value |
|--------------------------|-----------------|-----------------|
| Suction cup shape | - | Flat |
| Application | - | Dry sheet metal |
| Suction cup design | - | Round |
| Characteristics | - | Dry sheet metal |
| Material | - | Silicone (SIL) |
| Weight, min. | oz | 7.054 |
| Suction cup model | - | F |
| Volume | in ³ | 9.76 |
| Height | in | 2.59 |
| Outer diameter, min. | in | 5.98 |
| Outer diameter, actuated | in | 6.18 |
| Fitting size | - | 1/2" |
| Fitting option | - | Cone valve |
| Fitting style | - | Female |
| Fitting type | - | G-thread |
| Suction cup model | - | F150 |
| Movement, vertical max. | in | 0.24 |
| Curve radius, min. | in | 19.68 |

Performance - Lifting forces

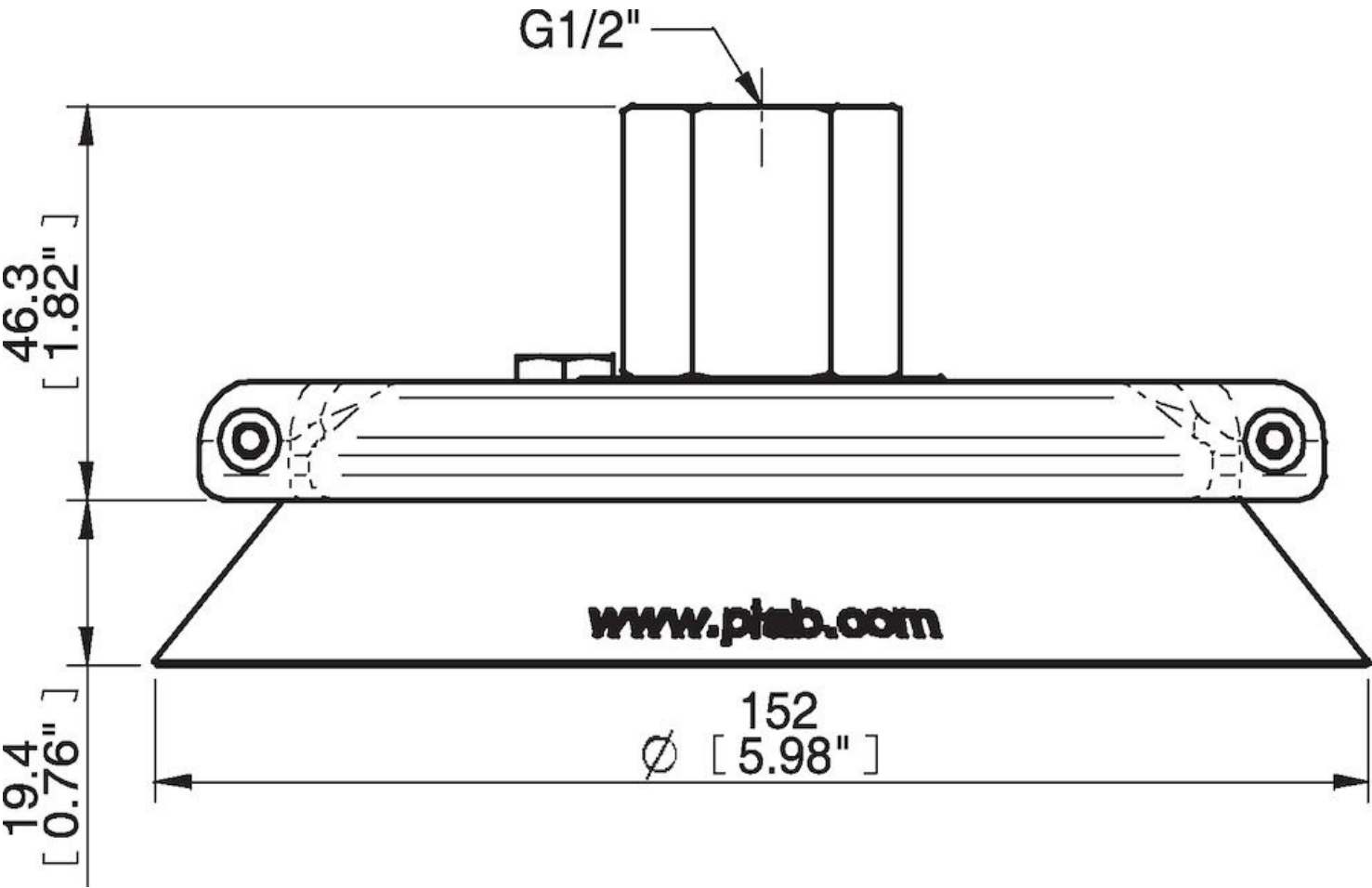
| F150 | Vertical (lb) | Parallel (lb) |
|-------------|---------------|---------------|
| 5.91 -inHg | 67.44 | 56.20 |
| 17.72 -inHg | 191.088 | 134.89 |
| 26.58 -inHg | 247.29 | 179.85 |

| | |
|------------------------|---------------------------|
| Material | |
| Name | Silicone, SIL 50° Shore A |
| Color | Red |
| Temperature, min. °F | -40.0 |
| Temperature max. °F | 392.0 |
| Hardness °Shore A | 50 |

Material resistance

| | |
|--------------------|-----------|
| Alcohol | Good |
| Concentrated acids | Poor |
| Ethanol | n/a |
| Hydrolysis | Fair |
| Methanol | n/a |
| Oil | Poor |
| Oxidation | Excellent |
| Gasoline | Poor |
| Wear resistance | Good |
| Weather and ozone | Excellent |

Dimensional drawings



Values specified in this data sheet are tested at (unless otherwise stated):

- Room temperature (20°C [68°F] ± 3°C [5.5°F]).
- Standard atmosphere (101.3 [29.9 inHg] ± 1.0 kPa [0.3 inHg]).
- Relative humidity 20-70%.
- Compressed air quality, DIN ISO 8573-1 class 4.

Accessories

15NA | Fitting 150, G1/2" female, with mesh filter

15NB | Fitting 150, G3/4" female, with mesh filter

F150.30.W | Suction cup F150 Nitrile-PVC with washer

F150.20.W | Suction cup F150 Silicone with washer

F150.30 | Suction cup F150 Nitrile-PVC

15UA | Fitting G1/2" female Al, with mesh filter

Spare parts

15VA | Fitting 150, G1/2" female, clamp ring with cone valve

F150.20 | Suction cup F150 Silicone