

## Suction cup DCF65P Polyurethane 60, T-slot, with mesh filter

Item number: DCF65P.4S.T2MR



- Special designed friction cups for domed or flat oily surfaces, such as sheets in metal forming processes.
- Long lasting material, normal wear on friction cup will not affect the long term shear force performance.
- Best choice if > 0.1g/m<sup>2</sup> press oil is used on the sheet but also a great choice for dry metal sheets.
- Refined internal friction pattern provides additional grip performance, the suction cups can withstand high shear forces, typically 3–5 times more than corresponding conventional suction cups.
- Thin design that easily will follow convex or concave surfaces. The thin and pliable design in combination with a special inner friction pattern will maximize grip performance.
- DURAFLEX® suction cups manufactured in a specially developed material that features the elasticity of rubber and wear resistance of polyurethane. The material does not leave any marks on the objects handled and has a fantastic elastic memory, even after hundreds of thousands of cycles.

### Technical data

| Description              | Unit            | Value                   |
|--------------------------|-----------------|-------------------------|
| Suction cup shape        | -               | Deep Concave            |
| Application              | -               | Oily sheet metal        |
| Suction cup design       | -               | Round                   |
| Characteristics          | -               | Oily sheet metal        |
| Material                 | -               | Polyurethane (PU)       |
| Weight, min.             | oz              | 2.60                    |
| Suction cup model        | -               | DCF                     |
| Volume                   | in <sup>3</sup> | 1.46                    |
| Height                   | in              | 1.48                    |
| Outer diameter, min.     | in              | 2.66                    |
| Outer diameter, actuated | in              | 2.85                    |
| Fitting option           | -               | Filter mesh             |
| Fitting style            | -               | T-slot                  |
| Suction cup model        | -               | DCF65P Oily metal sheet |
| Movement, vertical max.  | in              | 0.39                    |
| Curve radius, min.       | in              | 3.74                    |
| Suction cup model        | -               | DCF65P Dry metal sheet  |
| Movement, vertical max.  | in              | 0.39                    |
| Curve radius, min.       | in              | 3.74                    |

## Performance - Lifting forces

|                         | Vertical (lb) | Parallel (lb) |
|-------------------------|---------------|---------------|
| DCF65P Oily metal sheet |               |               |
| 17.72 -inHg             | 31.70         | 22.48         |
| 26.58 -inHg             | 42.94         | 30.12         |
| DCF65P Dry metal sheet  |               |               |
| 17.72 -inHg             | 32.15         | 32.82         |
| 26.58 -inHg             | 43.39         | 44.063        |

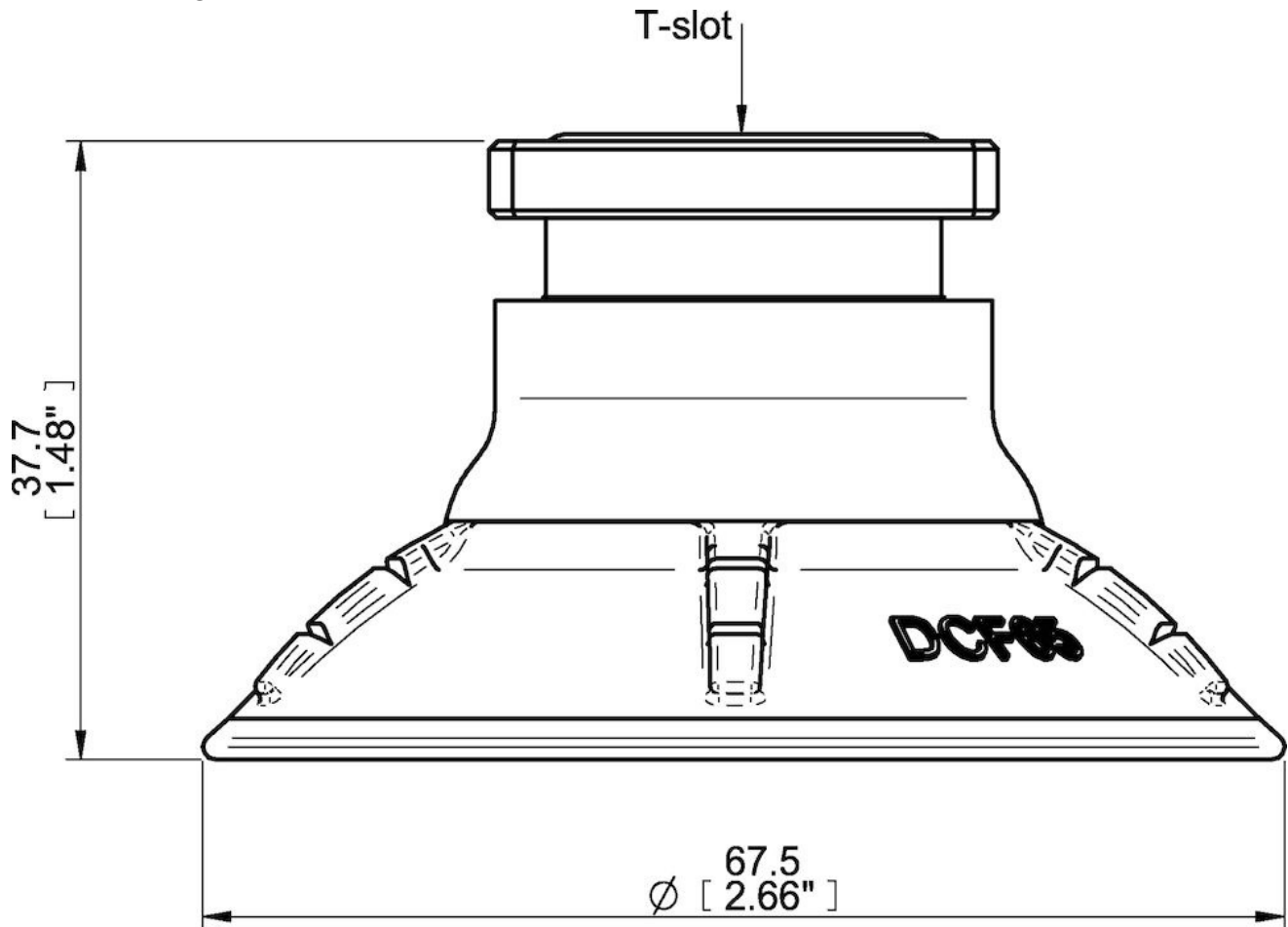
## Material

|                        |                     |
|------------------------|---------------------|
| Name                   | Polyurethane (PU60) |
| Color                  | Orange              |
| Temperature, min.   °F | 50.0                |
| Temperature max.   °F  | 122.0               |
| Hardness   °Shore A    | 60                  |

## Material resistance

|                    |           |
|--------------------|-----------|
| Alcohol            | n/a       |
| Concentrated acids | Fair      |
| Ethanol            | Fair      |
| Hydrolysis         | Fair      |
| Methanol           | Poor      |
| Oil                | Excellent |
| Oxidation          | Poor      |
| Gasoline           | Fair      |
| Wear resistance    | Excellent |
| Weather and ozone  | Excellent |

## Dimensional drawings



**Values specified in this data sheet are tested at (unless otherwise stated):**

- Room temperature (20°C [68°F] ± 3°C [5.5°F]).
- Standard atmosphere (101.3 [29.9 inHg] ± 1.0 kPa [0.3 inHg]).
- Relative humidity 20-70%.
- Compressed air quality, DIN ISO 8573-1 class 4.