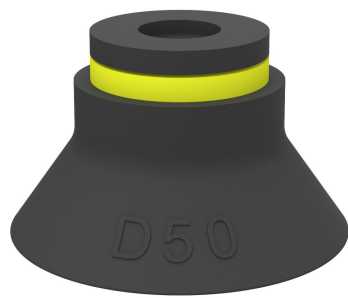


Suction cup D50 Chloroprene

Item number: D50.10

- Suitable for objects with curved or irregular surfaces
- Grips around corners and edges.



Technical data

| Description | Unit | Value |
|-------------------------|------|---|
| Suction cup shape | - | Deep |
| Application | - | Dry sheet metal, Plastic injection molded parts |
| Suction cup design | - | Round |
| Characteristics | - | Dry sheet metal, Plastic injection molded parts |
| Material | - | Chloroprene (CR) |
| Weight, min. | oz | 0.63 |
| Suction cup model | - | D |
| Volume | in³ | 0.92 |
| Height | in | 1.24 |
| Outer diameter, min. | in | 2.087 |
| Fitting size | - | None |
| Fitting option | - | None |
| Fitting style | - | None |
| Fitting type | - | None |
| Suction cup model | - | D50 |
| Movement, vertical max. | in | 0.31 |
| Curve radius, min. | in | 0.98 |

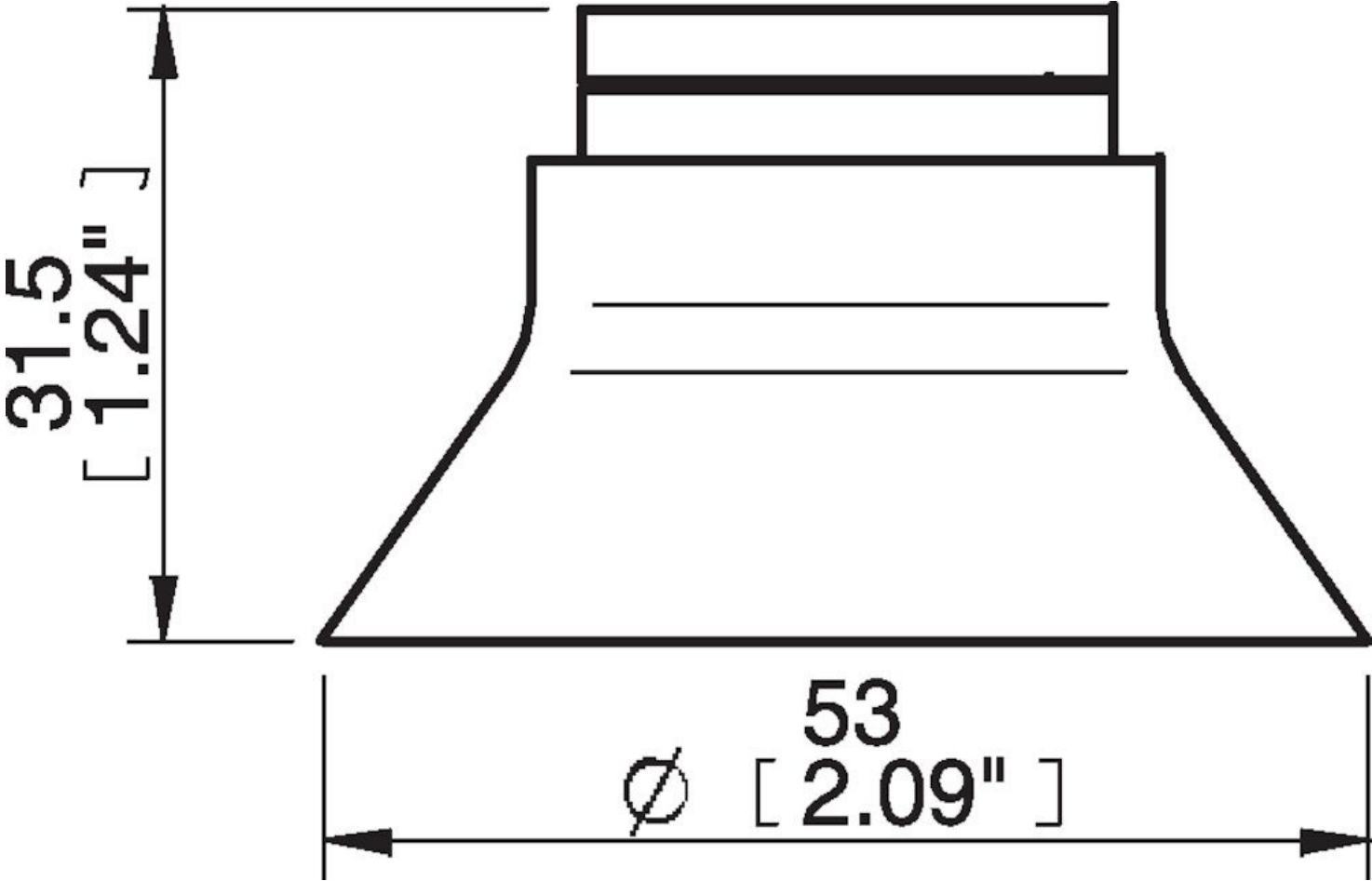
Performance - Lifting forces

| D50 | Vertical (lb) | Parallel (lb) |
|-------------|---------------|---------------|
| 5.91 -inHg | 8.093 | 6.72 |
| 17.72 -inHg | 17.54 | 9.58 |
| 26.58 -inHg | 22.031 | 10.66 |

| Material | |
|------------------------|------------------------------|
| Name | Chloroprene (CR) 50° Shore A |
| Color | Black |
| Temperature, min. °F | -40.0 |
| Temperature max. °F | 230.0 |
| Hardness °Shore A | 50 |

| Material resistance | |
|---------------------|-----------|
| Alcohol | Good |
| Concentrated acids | Poor |
| Ethanol | n/a |
| Hydrolysis | Good |
| Methanol | n/a |
| Oil | Fair |
| Oxidation | Good |
| Gasoline | Fair |
| Wear resistance | Excellent |
| Weather and ozone | Good |

Dimensional drawings



Values specified in this data sheet are tested at (unless otherwise stated):

- Room temperature (20°C [68°F] ± 3°C [5.5°F]).
- Standard atmosphere (101.3 [29.9 inHg] ± 1.0 kPa [0.3 inHg]).
- Relative humidity 20-70%.
- Compressed air quality, DIN ISO 8573-1 class 4.

Accessories

05AF | Fitting 5x1/8" NPSF female, 50
05AG | Fitting 1/8" NPSF female, 50, with mesh filter
05AI | Fitting G1/8" male, 50, with mesh filter
05CA | Fitting 1/8" NPSF female, 50, PA
05AA | Fitting 1/8" NPSF female, 50
05AD | Fitting G3/8" male, 50, with mesh filter
05AE | Fitting 3/8" NPT male, with mesh filter
05AB | Fitting G1/4" male, 50, with mesh filter
05AC | Fitting 1/4" NPT male, with mesh filter
05DA | Fitting 1/8" NPSF female, 50, with dual flow control valve
05DB | Fitting G1/4" male, with dual flow control valve
05DC | Fitting 1/4" NPT male, with dual flow control valve
05DD | Fitting G3/8" male, 50, with mesh filter and dual flow control valve
05DE | Fitting 3/8" NPT male, with dual flow control valve
05DF | Fitting 5x1/8" NPSF female, 50, with dual flow control valve