

# Suction cup D30-2 Silicone, G1/8" male/M5 female, PA

Item number: D30-2.20.02CD



- Suitable for objects with curved or irregular surfaces
- Grips around corners and edges.

Technical data

Description	Unit	Value
Suction cup shape	-	Deep
Application	-	Plastic injection molded parts
Suction cup design	-	Round
Characteristics	-	Plastic injection molded parts
Material	-	Silicone (SIL)
Weight, min.	oz	0.14
Suction cup model	-	D
Volume	in <sup>3</sup>	0.31
Height	in	1.13
Outer diameter, min.	in	1.26
Fitting size	-	1/8", M5
Fitting option	-	None
Fitting style	-	Female/Male
Fitting type	-	G-thread, M-thread
Suction cup model	-	D30-2
Movement, vertical max.	in	0.71
Curve radius, min.	in	0.51

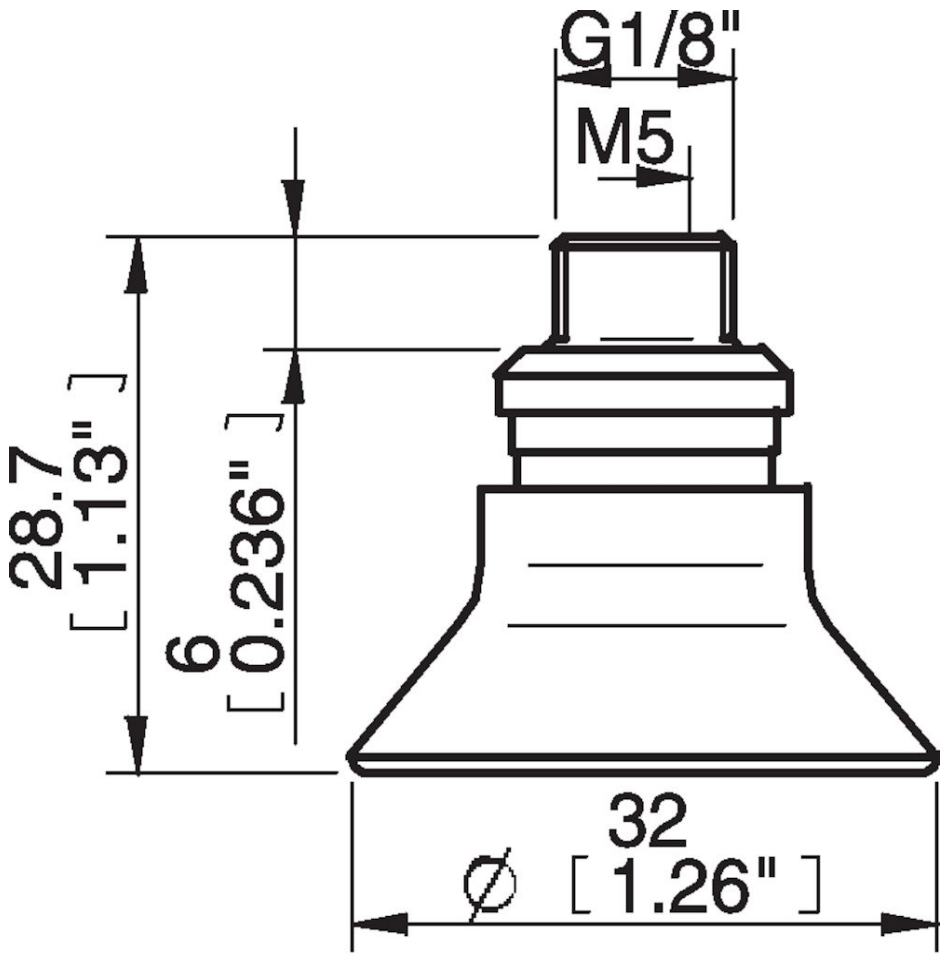
Performance - Lifting forces

D30-2	Vertical (lb)	Parallel (lb)
5.91 -inHg	3.15	2.52
17.72 -inHg	5.85	3.78
26.58 -inHg	6.97	4.0016

Material	
Name	Silicone, SIL 50° Shore A
Color	Red
Temperature, min.   °F	-40.0
Temperature max.   °F	392.0
Hardness   °Shore A	50

Material resistance	
Alcohol	Good
Concentrated acids	Poor
Ethanol	n/a
Hydrolysis	Fair
Methanol	n/a
Oil	Poor
Oxidation	Excellent
Gasoline	Poor
Wear resistance	Good
Weather and ozone	Excellent

Dimensional drawings



Values specified in this data sheet are tested at (unless otherwise stated):

- Room temperature (20°C [68°F] ± 3°C [5.5°F]).
- Standard atmosphere (101.3 [29.9 inHg] ± 1.0 kPa [0.3 inHg]).
- Relative humidity 20-70%.
- Compressed air quality, DIN ISO 8573-1 class 4.

### **Accessories**

02AE | Fitting 5xM5 female

D30-2.10 | Suction cup D30-2 Chloroprene

02AF | Fitting G1/8" male/M5 female, with mesh filter

02AA | Fitting M5 female

02AD | Fitting G1/8" male/M5 female

02AB | Fitting G1/8" male, with mesh filter

02AC | Fitting 1/8" NPT male, with mesh filter

02DA | Fitting M5 female, with dual flow control valve

02DC | Fitting 1/8" NPT male, with dual flow control valve

02DD | Fitting G1/8" male/M5 female, with dual flow control valve

02DE | Fitting 5xM5 female, with dual flow control valve

### **Spare parts**

D30-2.20 | Suction cup D30-2 Silicone

02CD | Fitting G1/8" male/M5 female, PA