

Datasheet

Suction cup BX52P Polyurethane 30/60 with filter, 5x1/8" NPSF female, with dual flow control valve

Item number: BX52P.4K.05DF.F



- Suitable for level adjustment and for uneven and porous surfaces such as cardboard, etc.
- Dual hardness allowing strength and stability in conjunction with softness and flexibility.
- DURAFLEX® material features the elasticity of rubber in combination with the wear resistance of polyurethane.
- The DURAFLEX® material is mark-free.
- Filter disk made of polyester PES4/14 and TPE.

Technical data

Description	Unit	Value
Suction cup shape	-	Multibellows
Application	-	Dry sheet metal, Corrugated cardboard/Paperboard, Plastic injection molded parts, Mark Free
Suction cup design	-	Round
Characteristics	-	Dry sheet metal, Corrugated / cardboard, Plastic injection molded parts, Mark free
Material	-	Polyurethane (PU)
Weight, min.	oz	0.85
Suction cup model	-	BX-P
Volume	in ³	1.83
Leakage flow, max.	scfm	0.34
Height	in	2.24
Outer diameter, min.	in	2.087
Fitting size	-	5x1/8"
Fitting option	-	Dual flow control valve, Filter disc
Fitting style	-	Female
Fitting type	-	NPSF-thread
Valve restriction	in	0.039
Suction cup model	-	BX52P PU30 PU60
Movement, vertical max.	in	0.75
Curve radius, min.	in	1.26

Performance - Lifting forces

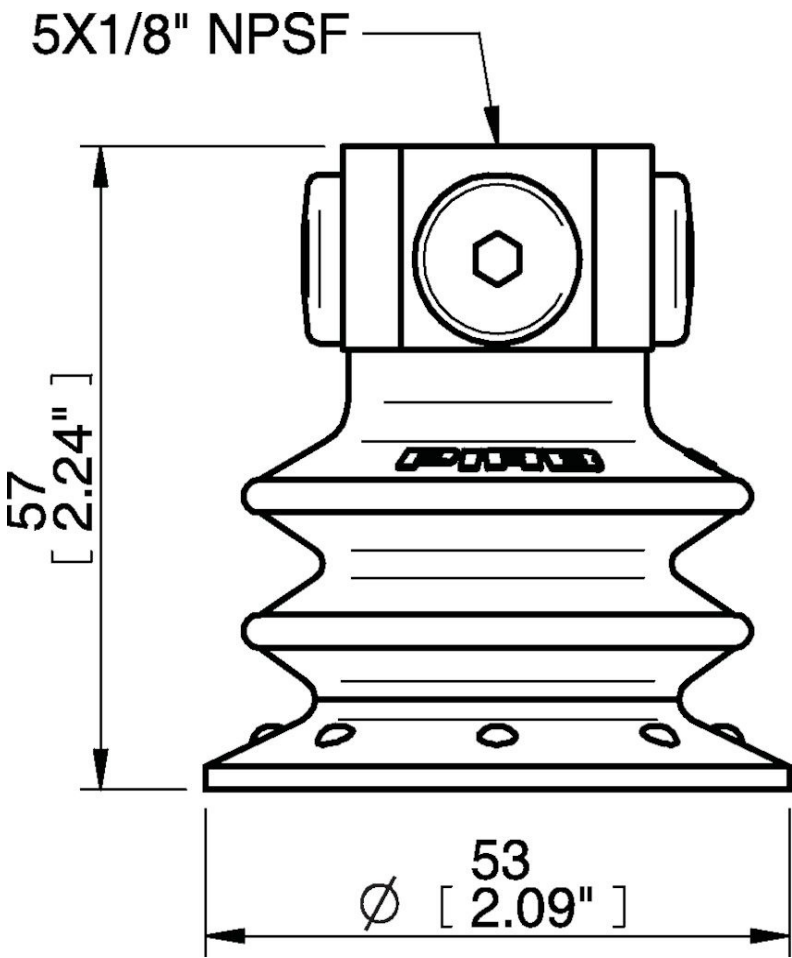
BX52P PU30 PU60	Vertical (lb)	Parallel (lb)
5.91 -inHg	7.19	5.62
17.72 -inHg	12.59	9.89
26.58 -inHg	16.86	12.14

Material		
Name	Polyurethane (PU30)	Polyurethane (PU60)
Color	Yellow	Green transparent
Temperature, min. °F	50.0	50.0
Temperature max. °F	122.0	122.0
Hardness °Shore A	30	60

Material resistance

Alcohol	n/a	n/a
Concentrated acids	Fair	Fair
Ethanol	Fair	Fair
Hydrolysis	Fair	Fair
Methanol	Poor	Poor
Oil	Excellent	Excellent
Oxidation	Poor	Poor
Gasoline	Fair	Fair
Wear resistance	Excellent	Excellent
Weather and ozone	Excellent	Excellent

Dimensional drawings



Values specified in this data sheet are tested at (unless otherwise stated):

- Room temperature (20°C [68°F] ± 3°C [5.5°F]).
- Standard atmosphere (101.3 [29.9 inHg] ± 1.0 kPa [0.3 inHg]).
- Relative humidity 20-70%.
- Compressed air quality, DIN ISO 8573-1 class 4.

Accessories

05AF | Fitting 5x1/8" NPSF female, 50
05AG | Fitting 1/8" NPSF female, 50, with mesh filter
BX52P.4K | Suction cup BX52P Polyurethane 30/60
BX52P.4E | Suction cup BX52P Polyurethane 60
BX52P.4E.F | Suction cup BX52P Polyurethane 60, with filter
05AI | Fitting G1/8" male, 50, with mesh filter
05AA | Fitting 1/8" NPSF female, 50
05AD | Fitting G3/8" male, 50, with mesh filter
05AE | Fitting 3/8" NPT male, with mesh filter
05AB | Fitting G1/4" male, 50, with mesh filter
05AC | Fitting 1/4" NPT male, with mesh filter
05DA | Fitting 1/8" NPSF female, 50, with dual flow control valve
05DB | Fitting G1/4" male, with dual flow control valve
05DC | Fitting 1/4" NPT male, with dual flow control valve
05DD | Fitting G3/8" male, 50, with mesh filter and dual flow control valve
05DE | Fitting 3/8" NPT male, with dual flow control valve

Spare parts

BX52P.4K.F | Suction cup BX52P Polyurethane 30/60, with filter
05DF | Fitting 5x1/8" NPSF female, 50, with dual flow control valve
02.01.002 | Suction cup filter BX52P, 10 pcs