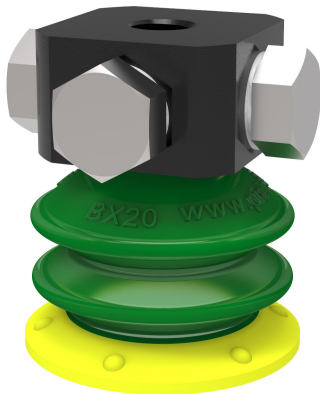


Suction cup BX20P Polyurethane 30/60, 5xM5 female

Item number: BX20P.4K.02AE



- Suitable for level adjustment and for uneven and porous surfaces such as cardboard, etc.
- Dual hardness allowing strength and stability in conjunction with softness and flexibility.
- DURAFLEX® material features the elasticity of rubber in combination with the wear resistance of polyurethane.
- The DURAFLEX® material is mark-free.

Technical data

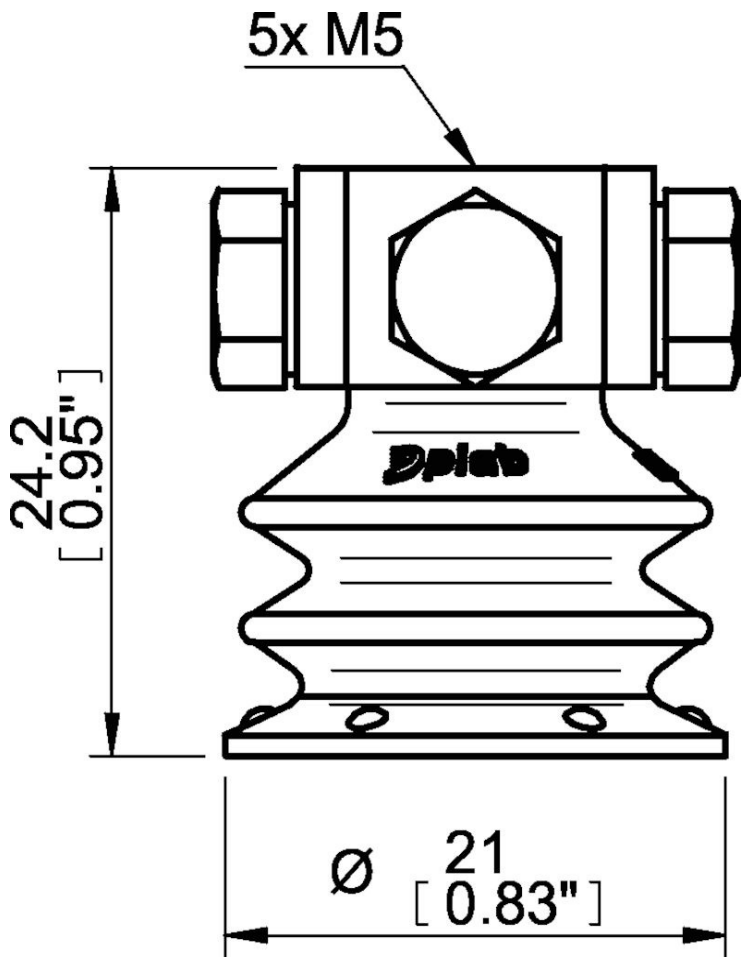
| Description | Unit | Value |
|-------------------------|-----------------|---|
| Suction cup shape | - | Multibellows |
| Application | - | Dry sheet metal, Corrugated cardboard/Paperboard, Mark Free, Plastic injection molded parts |
| Suction cup design | - | Round |
| Characteristics | - | Dry sheet metal, Corrugated / cardboard, Mark free, Plastic injection molded parts |
| Material | - | Polyurethane (PU) |
| Weight, min. | oz | 0.050 |
| Suction cup model | - | BX-P |
| Volume | in ³ | 0.071 |
| Height | in | 0.95 |
| Outer diameter, min. | in | 0.83 |
| Fitting size | - | 5×M5 |
| Fitting option | - | None |
| Fitting style | - | Female |
| Fitting type | - | M-thread |
| Suction cup model | - | BX20P PU30 PU60 |
| Movement, vertical max. | in | 0.30 |
| Curve radius, min. | in | 0.39 |

Performance - Lifting forces

| BX20P PU30 PU60 | Vertical (lb) | Parallel (lb) |
|-----------------|---------------|---------------|
| 5.91 -inHg | 1.012 | 0.90 |
| 17.72 -inHg | 1.57 | 1.26 |
| 26.58 -inHg | 2.14 | 1.46 |

| Material | | |
|------------------------|---------------------|---------------------|
| Name | Polyurethane (PU30) | Polyurethane (PU60) |
| Color | Yellow | Green transparent |
| Temperature, min. °F | 50.0 | 50.0 |
| Temperature max. °F | 122.0 | 122.0 |
| Hardness °Shore A | 30 | 60 |
| Material resistance | | |
| Alcohol | n/a | n/a |
| Concentrated acids | Fair | Fair |
| Ethanol | Fair | Fair |
| Hydrolysis | Fair | Fair |
| Methanol | Poor | Poor |
| Oil | Excellent | Excellent |
| Oxidation | Poor | Poor |
| Gasoline | Fair | Fair |
| Wear resistance | Excellent | Excellent |
| Weather and ozone | Excellent | Excellent |

Dimensional drawings



Values specified in this data sheet are tested at (unless otherwise stated):

- Room temperature (20°C [68°F] ± 3°C [5.5°F]).
- Standard atmosphere (101.3 [29.9 inHg] ± 1.0 kPa [0.3 inHg]).
- Relative humidity 20-70%.
- Compressed air quality, DIN ISO 8573-1 class 4.

Accessories

02AF | Fitting G1/8" male/M5 female, with mesh filter

BX20P.4E | Suction cup BX20P Polyurethane 60

02AA | Fitting M5 female

02AB | Fitting G1/8" male, with mesh filter

02AC | Fitting 1/8" NPT male, with mesh filter

02DD | Fitting G1/8" male/M5 female, with dual flow control valve

Spare parts

02AE | Fitting 5xM5 female

BX20P.4K | Suction cup BX20P Polyurethane 30/60