

Suction cup BL20-2 HNBR, 5xM5 female, with dual flow control valve

Item number: BL20-2.47.02DE



- Suitable for level adjustment.
- Lifting movement to separate small and thin objects.
- Less suitable when the lifting force is parallel to the surface of the object.
- Optional reinforcement rings made of polyamide.

Technical data

Description	Unit	Value
Suction cup shape	-	Multibellows
Application	-	Bag handling, Mark Free
Suction cup design	-	Round
Characteristics	-	Bag handling, Mark free
Material	-	HNBR
Weight, min.	oz	0.11
Suction cup model	-	BL-2
Volume	in ³	0.24
Leakage flow, max.	scfm	0.13
Height	in	1.26
Outer diameter, min.	in	0.79
Fitting size	-	5xM5
Fitting option	-	Dual flow control valve
Fitting style	-	Female
Fitting type	-	M-thread
Valve restriction	in	0.028
Restricted vacuum flow	scfm	1.48
Suction cup model	-	BL20-2 reinforcement ring
Movement, vertical max.	in	0.50
Curve radius, min.	in	0.16
Suction cup model	-	BL20-2
Movement, vertical max.	in	0.50
Curve radius, min.	in	0.16

Performance - Lifting forces

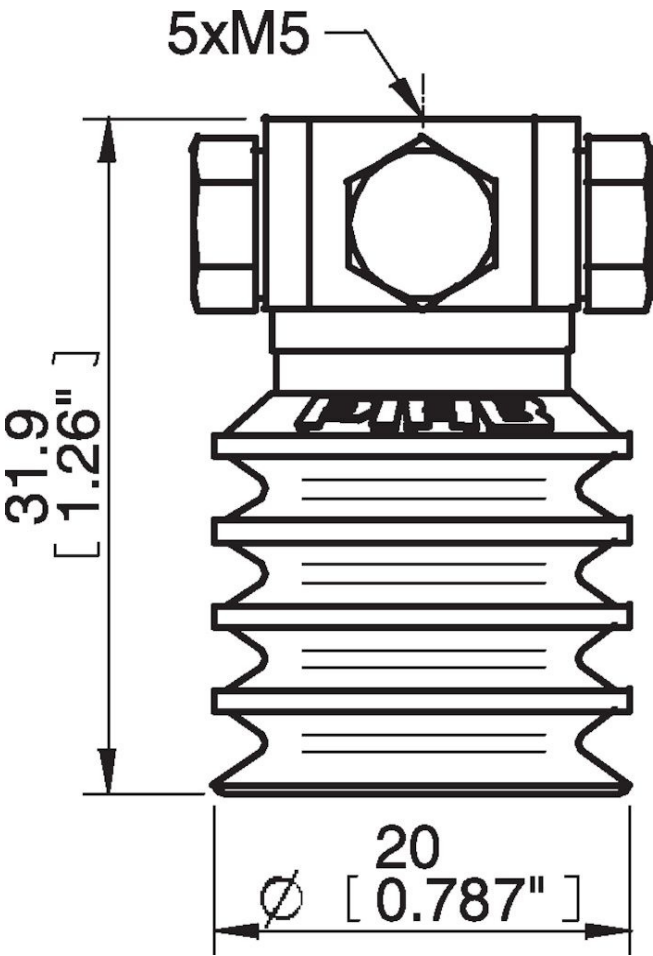
BL20-2 reinforcement ring	Vertical (lb)	Parallel (lb)
5.91 -inHg	0.74	0.83
17.72 -inHg	1.84	1.35
BL20-2		
5.91 -inHg	0.49	
17.72 -inHg	1.57	

Material	
Name	HNBR 50° Shore A
Color	Blue
Temperature, min. °F	-22.0
Temperature max. °F	284.0
Hardness °Shore A	50

Material resistance

Alcohol	Good
Concentrated acids	Fair
Ethanol	n/a
Hydrolysis	Good
Methanol	n/a
Oil	Excellent
Oxidation	Excellent
Gasoline	Excellent
Wear resistance	Excellent
Weather and ozone	Excellent

Dimensional drawings



Values specified in this data sheet are tested at (unless otherwise stated):

- Room temperature (20°C [68°F] ± 3°C [5.5°F]).
- Standard atmosphere (101.3 [29.9 inHg] ± 1.0 kPa [0.3 inHg]).
- Relative humidity 20-70%.
- Compressed air quality, DIN ISO 8573-1 class 4.

Accessories

02AE | Fitting 5xM5 female

BL20-2.10 | Suction cup BL20-2 Chloroprene

BL20-2.20 | Suction cup BL20-2 Silicone

02AF | Fitting G1/8" male/M5 female, with mesh filter

02CD | Fitting G1/8" male/M5 female, PA

02AA | Fitting M5 female

02AD | Fitting G1/8" male/M5 female

02AB | Fitting G1/8" male, with mesh filter

02AC | Fitting 1/8" NPT male, with mesh filter

02DA | Fitting M5 female, with dual flow control valve

02DC | Fitting 1/8" NPT male, with dual flow control valve

02DD | Fitting G1/8" male/M5 female, with dual flow control valve

31.50.071 | Strengthening ring set BL20, Set of 4

Spare parts

BL20-2.37 | Suction cup BL20-2 HNBR

02DE | Fitting 5xM5 female, with dual flow control valve