

# Suction cup B150 Nitrile-PVC, G1/2" female AI, with mesh filter

Item number: B150.30.15UA



- Suitable for level adjustment. Several short bellows in one lifting device can handle objects with height differences and varying shapes, for example embossed or corrugated plates.
- The lifting movement can be used to separate small and thin objects.
- Only lightweight objects should be handled when the lifting force is parallel to the surface of the object, in order to achieve good precision and safe lifting movement.

Technical data

Description	Unit	Value
Suction cup shape	-	Bellows
Application	-	Dry sheet metal, Plastic injection molded parts
Suction cup design	-	Round
Characteristics	-	Dry sheet metal, Plastic injection molded parts
Material	-	Nitrile-PVC (NPV)
Weight, min.	oz	9.35
Suction cup model	-	B
Volume	in <sup>3</sup>	39.66
Height	in	3.083
Outer diameter, min.	in	6.10
Fitting size	-	1/2"
Fitting option	-	Filter mesh
Fitting style	-	Female
Fitting type	-	G-thread
Suction cup model	-	B150
Movement, vertical max.	in	1.83
Curve radius, min.	in	2.95

Performance - Lifting forces

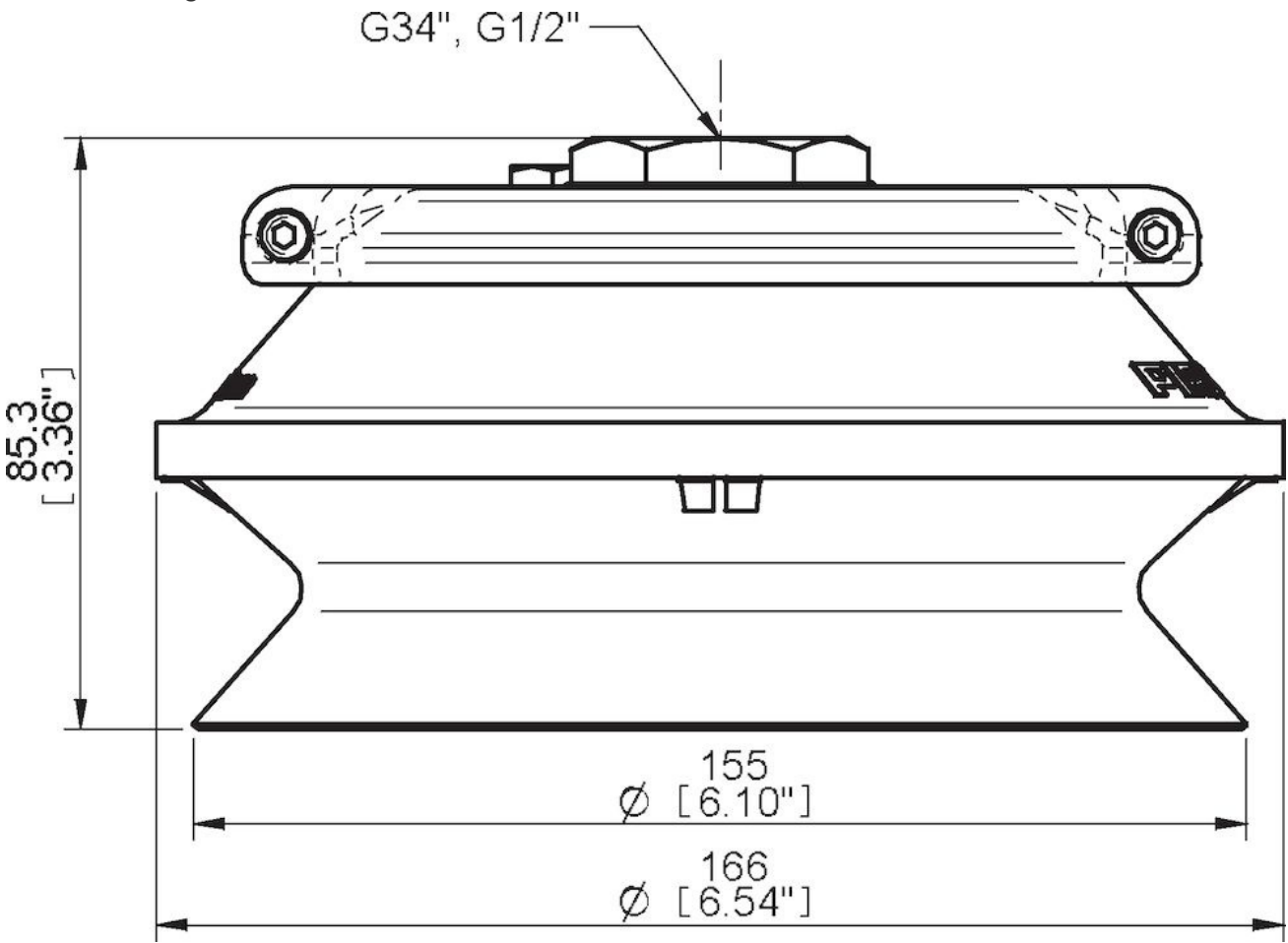
B150	Vertical (lb)	Parallel (lb)
5.91 -inHg	66.094	
17.72 -inHg	154.22	
26.58 -inHg	198.51	

<b>Material</b>	
Name	Nitrile-PVC (NPV)
Color	Black
Temperature, min.   °F	32.0
Temperature max.   °F	194.0
Hardness   °Shore A	50

**Material resistance**

Alcohol	Good
Concentrated acids	Fair
Ethanol	n/a
Hydrolysis	Good
Methanol	n/a
Oil	Excellent
Oxidation	Good
Gasoline	Excellent
Wear resistance	Excellent
Weather and ozone	Good

**Dimensional drawings**



**Values specified in this data sheet are tested at (unless otherwise stated):**

- Room temperature (20°C [68°F] ± 3°C [5.5°F]).
- Standard atmosphere (101.3 [29.9 inHg] ± 1.0 kPa [0.3 inHg]).
- Relative humidity 20-70%.
- Compressed air quality, DIN ISO 8573-1 class 4.

### **Accessories**

15NB | Fitting 150, G3/4" female, with mesh filter

15UA | Fitting G1/2" female Al, with mesh filter

B150.20 | Suction cup B150 Silicone

B150.30 | Suction cup B150 Nitrile-PVC

### **Spare parts**

15NA | Fitting 150, G1/2" female, with mesh filter

B150.30 | Suction cup B150 Nitrile-PVC