

Suction cup B15-2 Silicone, M5 male

Item number: B15-2.20.01AC



- Suitable for level adjustment.
- Lifting movement to separate small and thin objects.
- Only lightweight objects should be handled when the lifting force is parallel to the surface.

Technical data

| Description | Unit | Value |
|-------------------------|-----------------|---|
| Suction cup shape | - | Bellows |
| Application | - | Dry sheet metal, Plastic injection molded parts |
| Suction cup design | - | Round |
| Characteristics | - | Dry sheet metal, Plastic injection molded parts |
| Material | - | Silicone (SIL) |
| Weight, max. | oz | 0.14 |
| Weight, min. | oz | 0.053 |
| Suction cup model | - | B |
| Volume | in ³ | 0.067 |
| Height | in | 1.11 |
| Outer diameter, min. | in | 0.62 |
| Fitting size | - | M5 |
| Fitting option | - | None |
| Fitting style | - | Male |
| Fitting type | - | M-thread |
| Suction cup model | - | B15-2 |
| Movement, vertical max. | in | 0.26 |
| Curve radius, min. | in | 0.20 |

Performance - Lifting forces

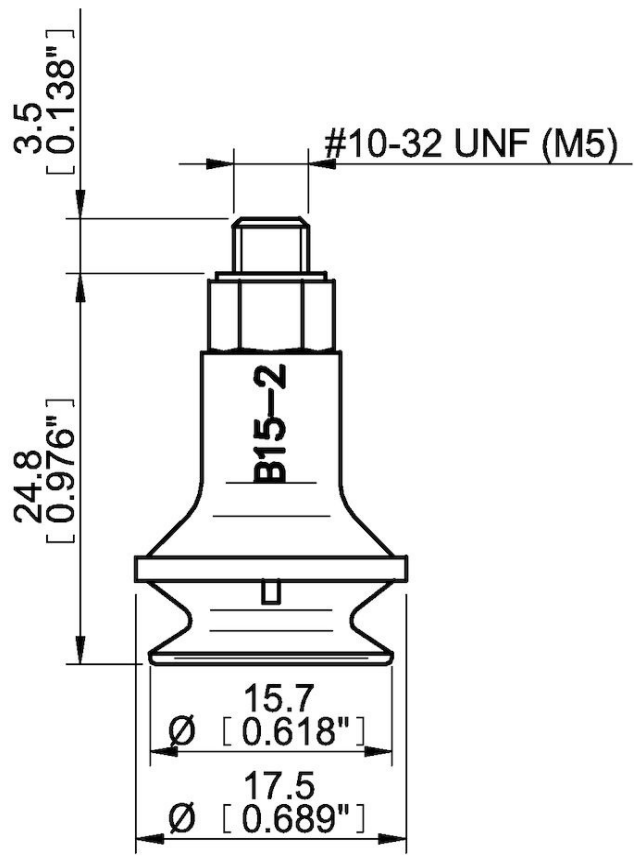
| B15-2 | Vertical (lb) | Parallel (lb) |
|-------------|---------------|---------------|
| 5.91 -inHg | 0.65 | 0.38 |
| 17.72 -inHg | 1.33 | 0.72 |
| 26.58 -inHg | 2.00081 | 0.85 |

| Material | |
|------------------------|---------------------------|
| Name | Silicone, SIL 50° Shore A |
| Color | Red |
| Temperature, min. °F | -40.0 |
| Temperature max. °F | 392.0 |
| Hardness °Shore A | 50 |

Material resistance

| | |
|--------------------|-----------|
| Alcohol | Good |
| Concentrated acids | Poor |
| Ethanol | n/a |
| Hydrolysis | Fair |
| Methanol | n/a |
| Oil | Poor |
| Oxidation | Excellent |
| Gasoline | Poor |
| Wear resistance | Good |
| Weather and ozone | Excellent |

Dimensional drawings



Values specified in this data sheet are tested at (unless otherwise stated):

- Room temperature (20°C [68°F] ± 3°C [5.5°F]).
- Standard atmosphere (101.3 [29.9 inHg] ± 1.0 kPa [0.3 inHg]).
- Relative humidity 20-70%.
- Compressed air quality, DIN ISO 8573-1 class 4.

Accessories

B15-2.47 | Suction cup B15-2 HNBR
 B15-2 10 l Suction cup B15-2 Chloroprene

Spare parts

01AC | Fitting M5 male, 10–15

B15-2.20 | Suction cup B15-2 Silicone