

Suction cup B110 Nitrile-PVC, G1/2" female AI, with mesh filter

Item number: B110.30.11UA



- Suitable for level adjustment. Several short bellows in one lifting device can handle objects with height differences and varying shapes, for example embossed or corrugated plates.
- The lifting movement can be used to separate small and thin objects.
- Only lightweight objects should be handled when the lifting force is parallel to the surface of the object, in order to achieve good precision and safe lifting movement.

Technical data

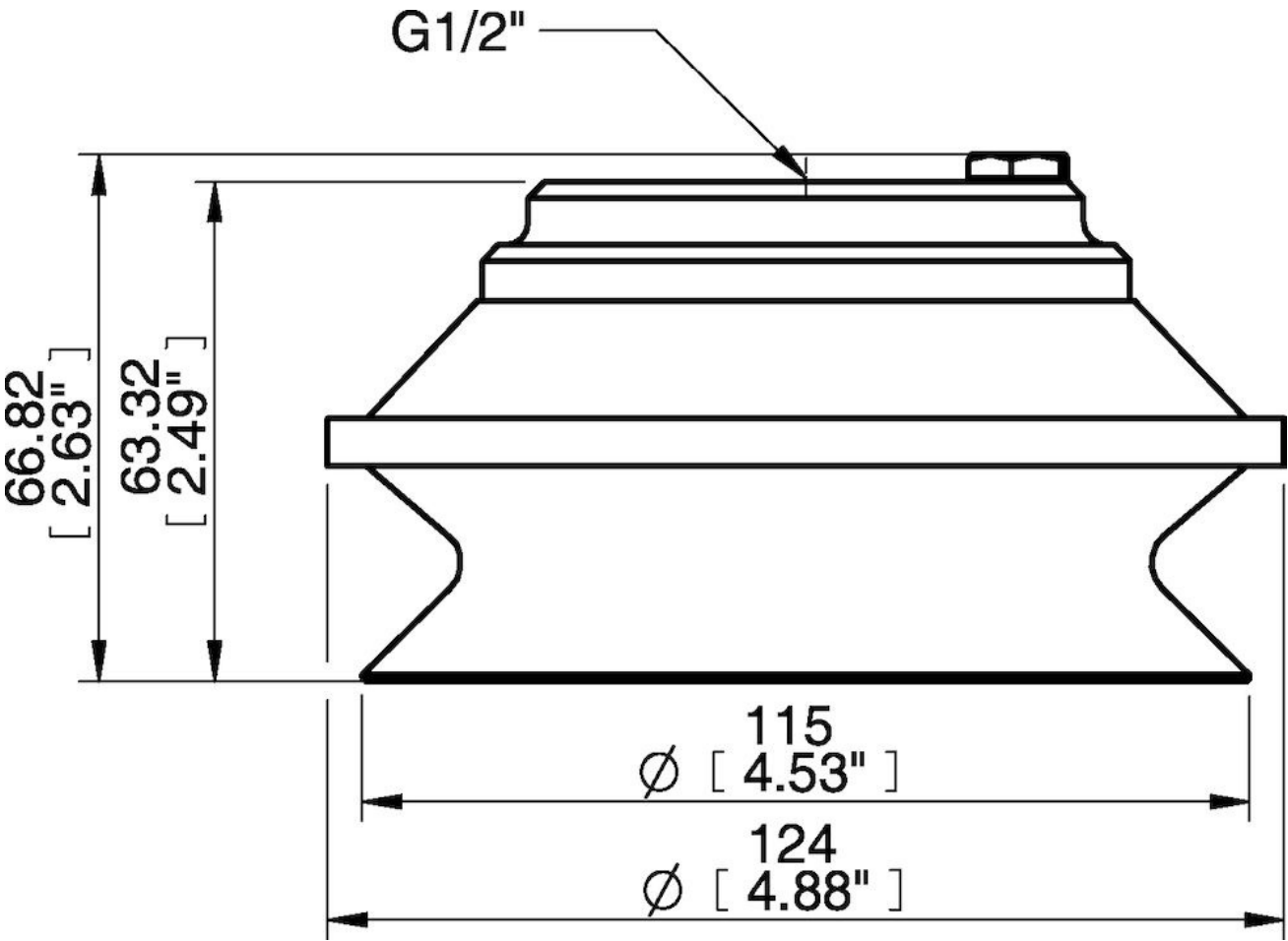
| Description | Unit | Value |
|-------------------------|-----------------|-------------------|
| Suction cup shape | - | Bellows |
| Application | - | Dry sheet metal |
| Suction cup design | - | Round |
| Characteristics | - | Dry sheet metal |
| Material | - | Nitrile-PVC (NPV) |
| Weight, min. | oz | 4.23 |
| Suction cup model | - | B |
| Volume | in ³ | 18.92 |
| Height | in | 2.63 |
| Outer diameter, min. | in | 4.53 |
| Fitting size | - | 1/2" |
| Fitting option | - | Filter mesh |
| Fitting style | - | Female |
| Fitting type | - | G-thread |
| Suction cup model | - | B110 |
| Movement, vertical max. | in | 1.36 |
| Curve radius, min. | in | 2.36 |

Performance - Lifting forces

| B110 | Vertical (lb) | Parallel (lb) |
|-------------|---------------|---------------|
| 5.91 -inHg | 30.80 | |
| 17.72 -inHg | 77.11 | |
| 26.58 -inHg | 103.64 | |

| | |
|----------------------------|-------------------|
| Material | |
| Name | Nitrile-PVC (NPV) |
| Color | Black |
| Temperature, min. °F | 32.0 |
| Temperature max. °F | 194.0 |
| Hardness °Shore A | 50 |
| Material resistance | |
| Alcohol | Good |
| Concentrated acids | Fair |
| Ethanol | n/a |
| Hydrolysis | Good |
| Methanol | n/a |
| Oil | Excellent |
| Oxidation | Good |
| Gasoline | Excellent |
| Wear resistance | Excellent |
| Weather and ozone | Good |

Dimensional drawings



Values specified in this data sheet are tested at (unless otherwise stated):

- Room temperature (20°C [68°F] ± 3°C [5.5°F]).
- Standard atmosphere (101.3 [29.9 inHg] ± 1.0 kPa [0.3 inHg]).
- Relative humidity 20-70%.
- Compressed air quality, DIN ISO 8573-1 class 4.

Accessories

11NA | Fitting 110 G3/8" female, clamp ring with mesh filter
11NB | Fitting 110, 3/8" NPSF female, with mesh filter
11NC | Fitting 110, G1/2" female, clamp ring with mesh filter
B110.37.W | Suction cup B110 HNBR with washer
B110.37 | Suction cup B110 HNBR
B110.20 | Suction cup B110 Silicone
B110.30 | Suction cup B110 Nitrile-PVC

Spare parts

11UA | Fitting G1/2" female Al, with mesh filter
B110.30 | Suction cup B110 Nitrile-PVC