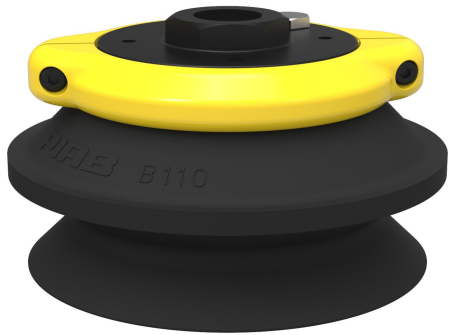


# Suction cup B110 Nitrile-PVC, G1/2" female, clamp ring with mesh filter

Item number: B110.30.11NC



- Suitable for level adjustment. Several short bellows in one lifting device can handle objects with height differences and varying shapes, for example embossed or corrugated plates.
- The lifting movement can be used to separate small and thin objects.
- Only lightweight objects should be handled when the lifting force is parallel to the surface of the object, in order to achieve good precision and safe lifting movement.

Technical data

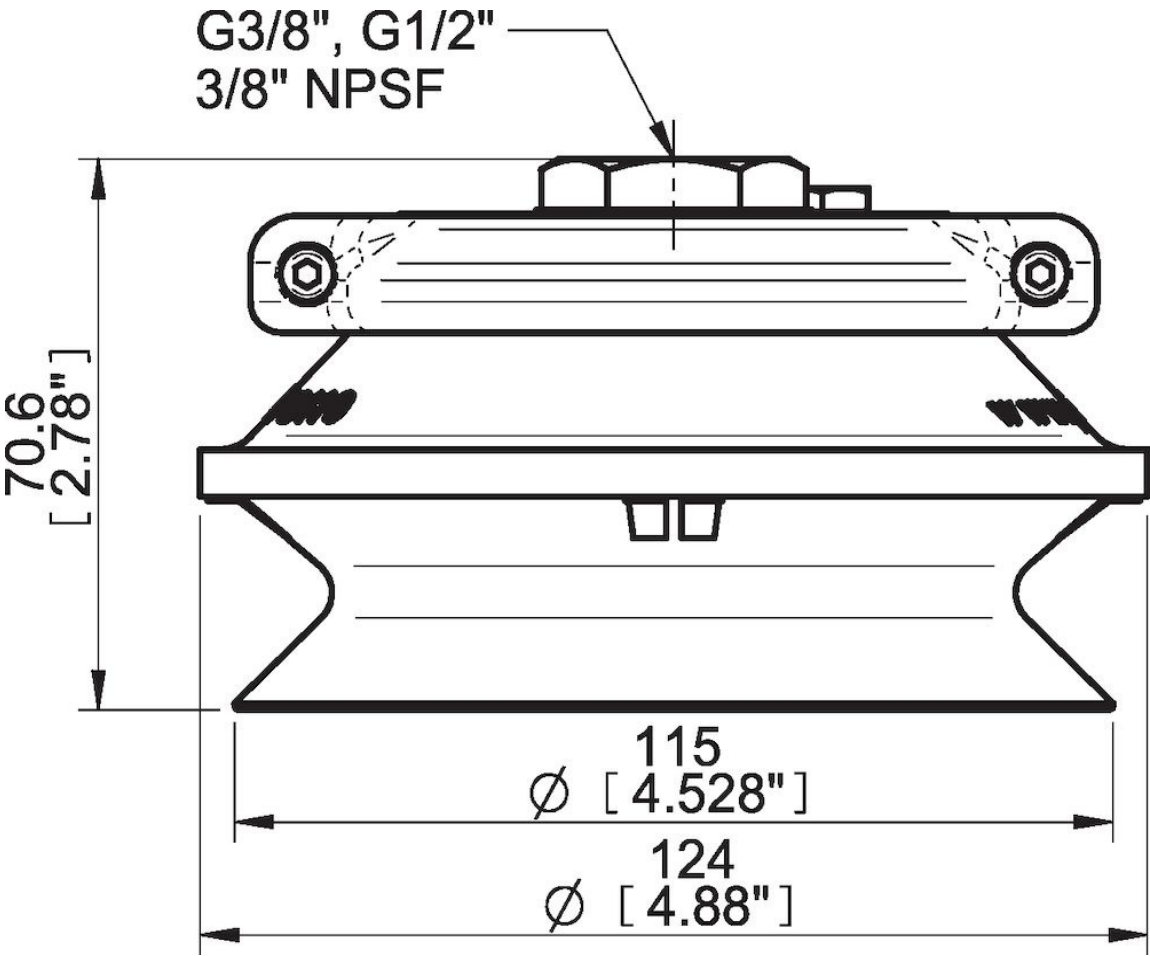
Description	Unit	Value
Suction cup shape	-	Bellows
Application	-	Dry sheet metal
Suction cup design	-	Round
Characteristics	-	Dry sheet metal
Material	-	Nitrile-PVC (NPV)
Weight, min.	oz	4.23
Suction cup model	-	B
Volume	in <sup>3</sup>	18.92
Height	in	2.78
Outer diameter, min.	in	4.65
Outer diameter, actuated	in	5.079
Fitting size	-	1/2"
Fitting option	-	Filter mesh
Fitting style	-	Female
Fitting type	-	G-thread
Suction cup model	-	B110
Movement, vertical max.	in	1.36
Curve radius, min.	in	2.36

Performance - Lifting forces

B110	Vertical (lb)	Parallel (lb)
5.91 -inHg	30.80	
17.72 -inHg	77.11	
26.58 -inHg	103.64	

<b>Material</b>	
Name	Nitrile-PVC (NPV)
Color	Black
Temperature, min.   °F	32.0
Temperature max.   °F	194.0
Hardness   °Shore A	50
<b>Material resistance</b>	
Alcohol	Good
Concentrated acids	Fair
Ethanol	n/a
Hydrolysis	Good
Methanol	n/a
Oil	Excellent
Oxidation	Good
Gasoline	Excellent
Wear resistance	Excellent
Weather and ozone	Good

Dimensional drawings



Values specified in this data sheet are tested at (unless otherwise stated):

- Room temperature (20°C [68°F] ± 3°C [5.5°F]).
- Standard atmosphere (101.3 [29.9 inHg] ± 1.0 kPa [0.3 inHg]).
- Relative humidity 20-70%.
- Compressed air quality, DIN ISO 8573-1 class 4.

**Accessories**

11NA | Fitting 110 G3/8" female, clamp ring with mesh filter

11NB | Fitting 110, 3/8" NPSF female, with mesh filter

B110.37.W | Suction cup B110 HNBR with washer

B110.37 | Suction cup B110 HNBR

11UA | Fitting G1/2" female Al, with mesh filter

B110.20 | Suction cup B110 Silicone

B110.30 | Suction cup B110 Nitrile-PVC

**Spare parts**

11NC | Fitting 110, G1/2" female, clamp ring with mesh filter

B110.30 | Suction cup B110 Nitrile-PVC