

# Suction cup B10-2 Silicone, M5 male

Item number: B10-2.20.01AC



- Suitable for level adjustment.
- Lifting movement to separate small and thin objects.
- Only lightweight objects should be handled when the lifting force is parallel to the surface.

Technical data

Description	Unit	Value
Suction cup shape	-	Bellows
Application	-	Dry sheet metal, Plastic injection molded parts
Suction cup design	-	Round
Characteristics	-	Dry sheet metal, Plastic injection molded parts
Material	-	Silicone (SIL)
Weight, min.	oz	0.035
Suction cup model	-	B
Volume	in <sup>3</sup>	0.029
Height	in	0.98
Outer diameter, min.	in	0.44
Outer diameter, actuated	in	0.49
Fitting size	-	M5
Fitting option	-	None
Fitting style	-	Male
Fitting type	-	M-thread
Suction cup model	-	B10-2
Movement, vertical max.	in	0.18
Curve radius, min.	in	0.16

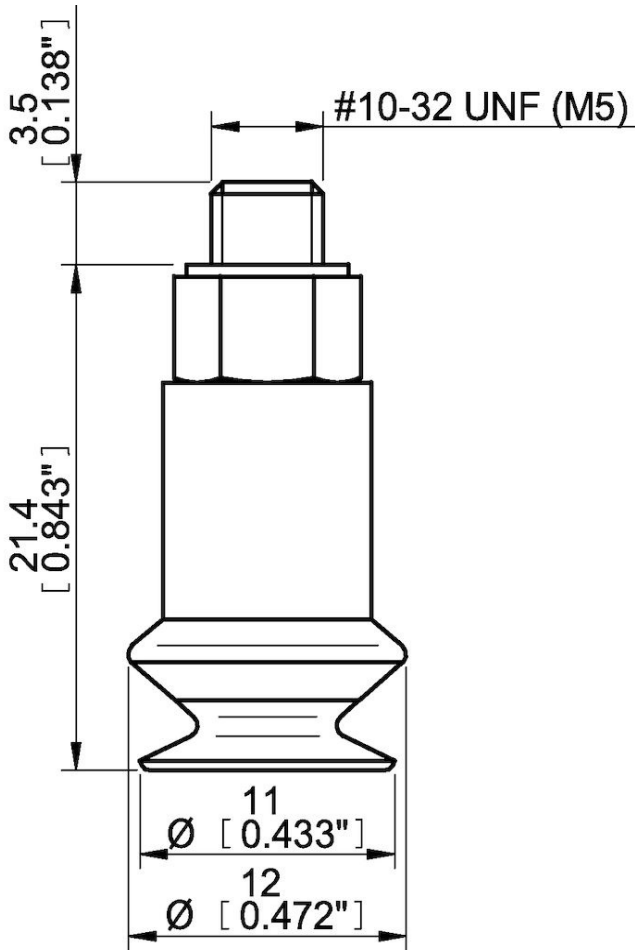
Performance - Lifting forces

B10-2	Vertical (lb)	Parallel (lb)
5.91 -inHg	0.34	0.40
17.72 -inHg	0.76	0.54
26.58 -inHg	1.10	0.63

Material	
Name	Silicone, SIL 60° Shore A
Color	Red
Temperature, min.   °F	-40.0
Temperature max.   °F	392.0
Hardness   °Shore A	60

Material resistance	
Alcohol	Good
Concentrated acids	Poor
Ethanol	n/a
Hydrolysis	Fair
Methanol	n/a
Oil	Poor
Oxidation	Excellent
Gasoline	Poor
Wear resistance	Good
Weather and ozone	Excellent

Dimensional drawings



Values specified in this data sheet are tested at (unless otherwise stated):

- Room temperature (20°C [68°F] ± 3°C [5.5°F]).
- Standard atmosphere (101.3 [29.9 inHg] ± 1.0 kPa [0.3 inHg]).
- Relative humidity 20-70%.
- Compressed air quality, DIN ISO 8573-1 class 4.

**Accessories**  
 B10-2.47 | Suction cup B10-2 HNBR  
 B10-2.20 | Suction cup B10-2 Silicone

**Spare parts**

01AC | Fitting M5 male, 10–15

B10-2.10 | Suction cup B10-2 Chloroprene