

## Suction cup F33 Silicone FCM, G1/4" male

Item number: 99.14.237



- Designed for opening bags in bag filling stations.
- Also suitable to handle thin and sensitive sheets, such as paper and plastic films.
- The thin, conformable lip and clever cleat pattern prevent sensitive object/sheet to get sucked in and damaged while giving enhanced lifting force.
- FDA 21 CFR 177.2600 & EU 1935/2004 approved silicone material.

### Technical data

Description	Unit	Value
Suction cup shape	-	Flat
Application	-	Thin paper / slip sheets / film, Food contact materials (FDA & EU), non-detectable
Suction cup design	-	Round
Characteristics	-	Bag opening/thin paper - slip sheets/film, Food contact materials (FDA & EU), non-detectable
Material	-	Silicone (SIL)
Weight, min.	oz	0.19
Suction cup model	-	F
Volume	in <sup>3</sup>	0.13
Height	in	1.52
Outer diameter, min.	in	1.28
Outer diameter, actuated	in	1.33
Fitting size	-	1/4"
Fitting option	-	None
Fitting style	-	Male
Fitting type	-	G-thread
Suction cup model	-	F33 FDA
Movement, vertical max.	in	0.059
Curve radius, min.	in	1.38

### Performance - Lifting forces

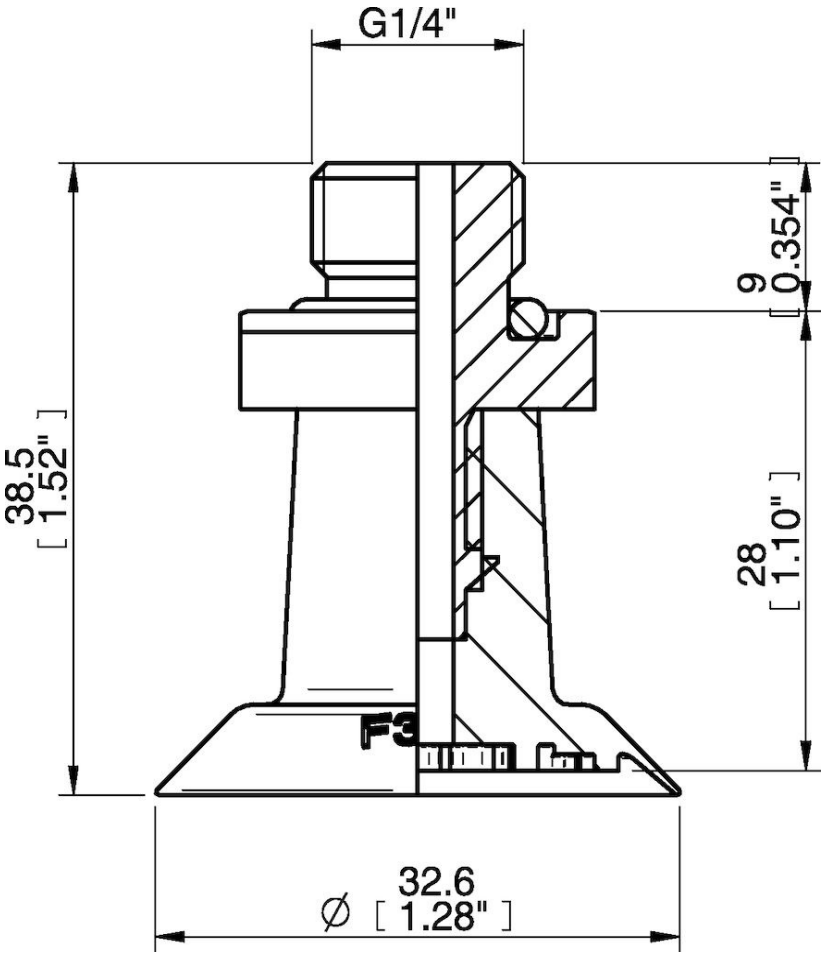
F33 FDA	Vertical (lb)	Parallel (lb)
5.91 -inHg	3.60	3.035
17.72 -inHg	8.54	7.31
26.58 -inHg	11.016	9.33

<b>Material</b>	
Name	Silicone (SIL FDA) 50° Shore
Color	Blue
Temperature, min.   °F	-40.0
Temperature max.   °F	392.0
Hardness   °Shore A	50

Material resistance

Alcohol	Good
Concentrated acids	Poor
Ethanol	n/a
Hydrolysis	Fair
Methanol	n/a
Oil	Poor
Oxidation	Excellent
Gasoline	Poor
Wear resistance	Good
Weather and ozone	Excellent

Dimensional drawings



Values specified in this data sheet are tested at (unless otherwise stated):

- Room temperature (20°C [68°F] ± 3°C [5.5°F]).
- Standard atmosphere (101.3 [29.9 inHg] ± 1.0 kPa [0.3 inHg]).
- Relative humidity 20-70%.
- Compressed air quality, DIN ISO 8573-1 class 4.

**Accessories**  
 02.01.969 | Fitting 1/8" NPSF female

**Spare parts**

02.00.328 | Suction cup F33 Silicone FCM

02.01.967 | Fitting G1/4" male