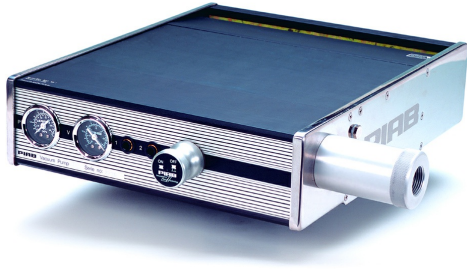


## Vacuum pump MAXI MLL800, NBR sealings

Item number: 31.01.058



- Largest compressed air driven pump on the market

### Technical data

Description	Unit	Value
Material	-	Al, PPS, Nitrile (NBR), SS
Temperature, max.	°F	176.0
Temperature, min.	°F	-4.0
Weight, min.	oz	481.25
Feed pressure, max.	psi	0.10
Noise level, max.	dBA	76
Noise level, min.	dBA	72

### Performance

Feed pressure psi	Air consumption scfm	Vacuum flow (scfm) at different vacuum levels (-inHg)													Max vacuum psi
		0	2	5	8	11	14	17	20	23	26	29	32	35	
87.0	118.66	51.97	29.23	19.79	10.34	5.20	3.63	2.60	1.24	0	0.53	0.012	0	0	≥13.20

Feed pressure psi	Air consumption scfm	Evacuation time (s/cf) to reach different vacuum levels (-inHg)												Max vacuum psi	
		2	5	8	11	14	17	20	23	26	28	29	29		29
87.0	118.66	0.00024	0.00053	0.0010	0.0024	0.0041	0.0071	0.012	0.021	0.059	0	0	0	0	≥13.20

### Dimensional drawings

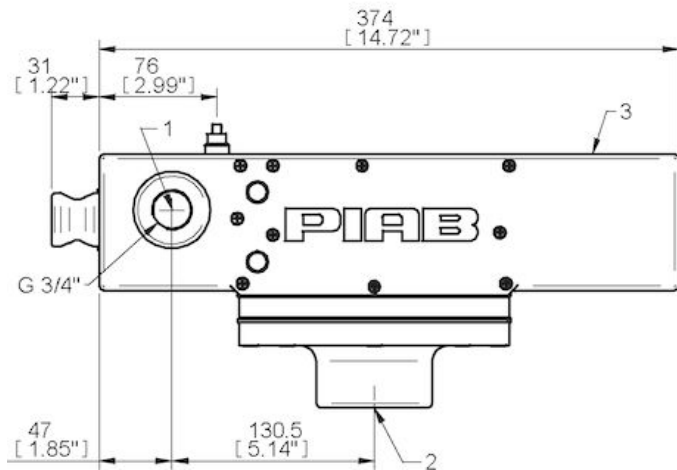
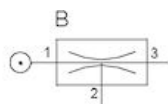
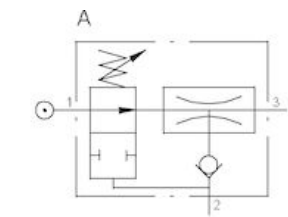
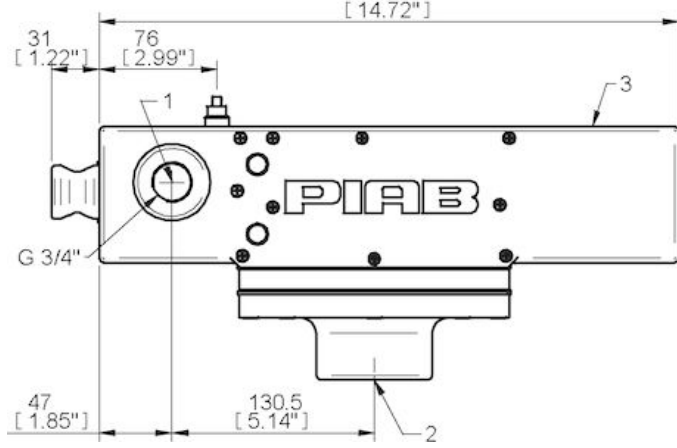
**Dimensional drawings**

Values specified in this datasheet are tested at (unless otherwise stated):

- Room temperature (20°C [68°F] ± 3°C [5.5°F]).
- Standard atmosphere (101.3 [29.9 inHg] ± 1.0 kPa [0.3 inHg]).
- Compressed air quality, DIN ISO 8573-1 class 4.

**Spare parts**

- 31.01.092 | Seal kit MAXI MLL800, NBR
- 31.01.092E | Seal kit MAXI MLL800, EPDM
- 31.01.092V | Seal kit MAXI MLL800, Viton®



**Tolerance and accuracy:**

- Feed pressure tolerance ±0.02 MPa [2.9 psi]
- Vacuum flow/evacuation time accuracy ±10%.

