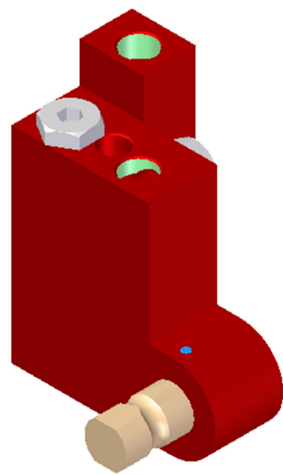


# Vacuum Check Valve VT-1H, NPT threads, Lock pin 16, Right hand connection

Item number: 1025RH



- Check valve that traps vacuum in sealed applications for safe operation.
- Built-in blow off check valve for fast release of object.
- Available in lock pin 16, 19 or ball joint mountings, industry standard.
- Available with level compensator to compensate for differences in level of object.
- Recommend using 4mm (5/32") tubing and no more than 80 psi for blow off.
- Recommend using 6mm (1/4") tubing and no more than 80 psi for vacuum.
- Equal line lengths from common manifold should be used for both blow-off and vacuum.
- Maximum of (12) units per tool.

Technical data

Description	Unit	Value
Material	-	Al, Ceramic, CuZn, Nitrile (NBR), Polyurethane (PU), SS, Steel
Temperature, max.	°F	158.0
Temperature, min.	°F	-22.0
Weight, max.	oz	13.97
Weight, min.	oz	12.38
Feed pressure, max. (blow-off)	psi	0.080
Feed pressure, min. (breakaway blow-off)	psi	0.036
Vacuum flow, range, max.	scfm	1.44
Life span (at max load)	cycles	10000000

Dimensional drawings

