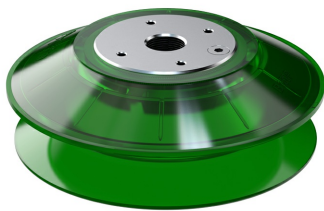


# B150P Polyurethane suction cup 60/60 with G 1/2” female

Item number: 02.41.410



Technical data

Description	Unit	Value
Suction cup shape	-	Bellows
Application	-	Dry sheet metal, Mark Free, Plastic injection molded parts
Suction cup design	-	Round
Characteristics	-	Dry sheet metal, Mark free, Plastic injection molded parts
Material	-	Polyurethane (PU)
Weight, min.	oz	11.53
Suction cup model	-	B-P
Volume	in³	23.13
Height	in	2.047
Outer diameter, max.	in	6.10
Outer diameter, min.	in	5.87
Outer diameter, actuated	in	6.26
Fitting size	-	1/2"
Fitting style	-	Female
Suction cup model	-	B150P PU60
Movement, vertical max.	in	1.18
Curve radius, min.	in	7.48

Performance - Lifting forces

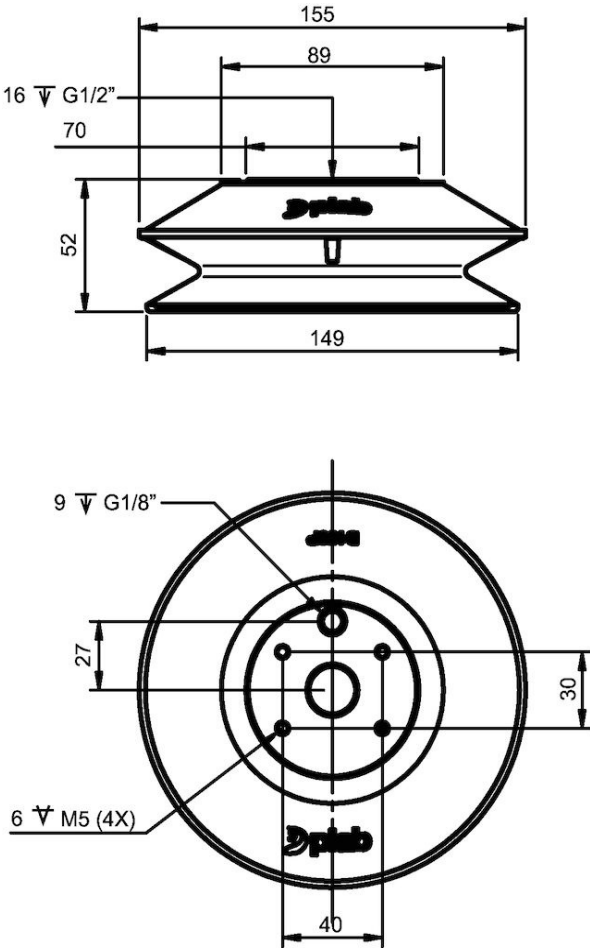
B150P PU60	Vertical (lb)	Parallel (lb)
5.91 -inHg	66.54	33.27
17.72 -inHg	138.033	69.017
26.58 -inHg	181.42	90.82

<b>Material</b>	
Name	Polyurethane (PU60)
Color	Green transparent
Temperature, min.   °F	50.0
Temperature max.   °F	122.0
Hardness   °Shore A	60

Material resistance

Alcohol	n/a
Concentrated acids	Fair
Ethanol	Fair
Hydrolysis	Fair
Methanol	Poor
Oil	Excellent
Oxidation	Poor
Gasoline	Fair
Wear resistance	Excellent
Weather and ozone	Excellent

Dimensional drawings



Values specified in this data sheet are tested at (unless otherwise stated):

- Room temperature (20°C [68°F] ± 3°C [5.5°F]).
- Standard atmosphere (101.3 [29.9 inHg] ± 1.0 kPa [0.3 inHg]).
- Relative humidity 20-70%.
- Compressed air quality, DIN ISO 8573-1 class 4.

Spare parts

02.30.670 | Suction cup B150P PU60 G1/2" Fe  
 01 06 990 | Plug low G1/8" cnl.