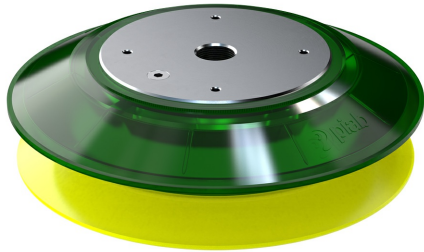


# Datasheet

## B200P Polyurethane suction cup 30/60 with G 1/2" female

Item number: 02.41.406



### Technical data

Description	Unit	Value
Suction cup shape	-	Bellows
Application	-	Dry sheet metal, Mark Free, Plastic injection molded parts
Suction cup design	-	Round
Characteristics	-	Dry sheet metal, Mark free, Plastic injection molded parts
Material	-	Polyurethane (PU)
Weight, min.	oz	43.56
Suction cup model	-	B-P
Volume	in <sup>3</sup>	43.81
Height	in	2.17
Outer diameter, max.	in	7.95
Outer diameter, min.	in	7.68
Outer diameter, actuated	in	8.11
Fitting size	-	1/2"
Fitting style	-	Female
Suction cup model	-	B200P PU30/60
Movement, vertical max.	in	1.22
Curve radius, min.	in	10.24

### Performance - Lifting forces

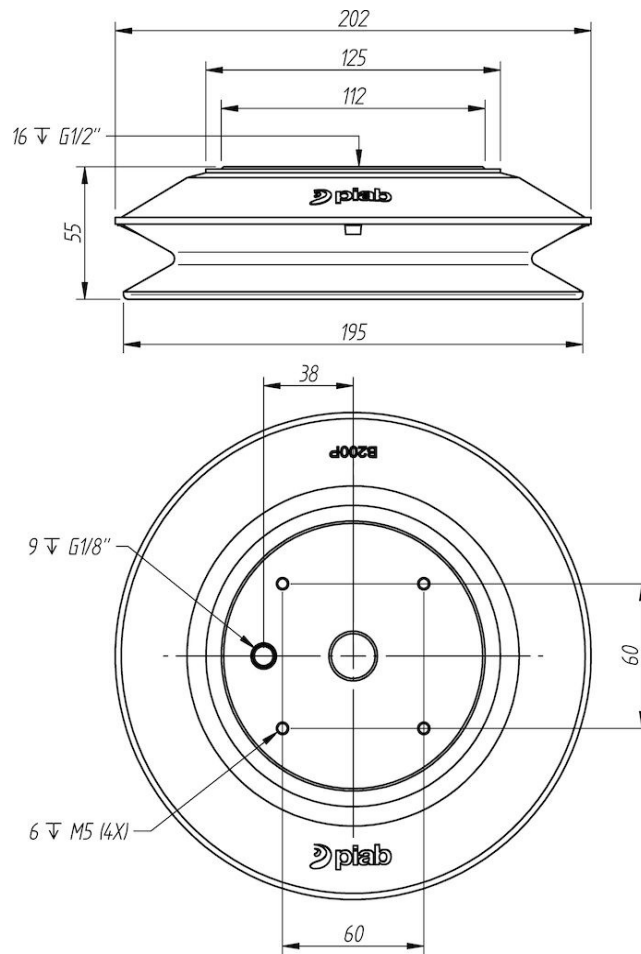
B200P PU30/60	Vertical (lb)	Parallel (lb)
5.91 -inHg	113.30	56.65
17.72 -inHg	239.20	119.60
26.58 -inHg	342.16	171.080

Material		
Name	Polyurethane (PU30)	Polyurethane (PU60)
Color	Yellow	Green transparent
Temperature, min.   °F	50.0	50.0
Temperature max.   °F	122.0	122.0
Hardness   °Shore A	30	60

### Material resistance

Alcohol	n/a	n/a
Concentrated acids	Fair	Fair
Ethanol	Fair	Fair
Hydrolysis	Fair	Fair
Methanol	Poor	Poor
Oil	Excellent	Excellent
Oxidation	Poor	Poor
Gasoline	Fair	Fair
Wear resistance	Excellent	Excellent
Weather and ozone	Excellent	Excellent

### Dimensional drawings



### Values specified in this data sheet are tested at (unless otherwise stated):

- Room temperature (20°C [68°F]  $\pm$  3°C [5.5°F]).
- Standard atmosphere (101.3 [29.9 inHg]  $\pm$  1.0 kPa [0.3 inHg]).
- Relative humidity 20-70%.
- Compressed air quality, DIN ISO 8573-1 class 4.