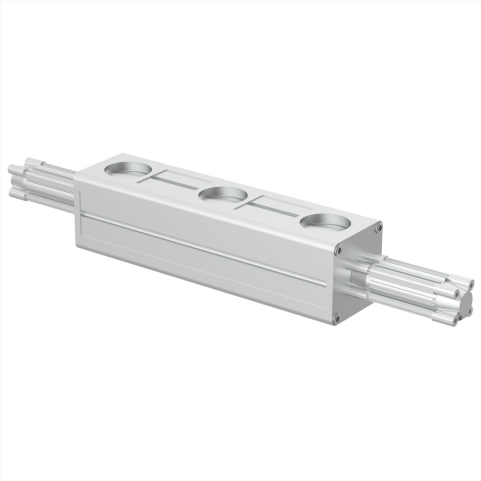


# Reverse valve for blowers and Large area grippers, 5 connections, G 2 1/2"

Item number: 02.32.350



- They have the function of suction, blow flow or neutral depending on the operation.
- They are made of anodized aluminium with POM-C seals.
- For optimal operation and increased lifetime of the blower in combination with a lot of Kenos® grippers.

Technical data

Description	Unit	Value
Material	-	Al
Weight, min.	oz	750.0000

Dimensional drawings

