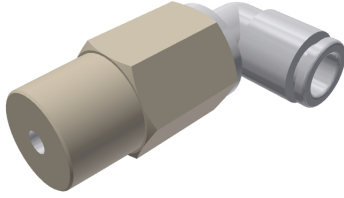


# Datasheet

## W06-02S-10 Extended Male Elbow

Item number: 02.14.754



- Accepts FEP, PFA, nylon, soft nylon, and polyurethane tubes
- Fluid: air, water
- Operating pressure range: -100kPa~1MPa
- Release collar allows easy removal of tubing without causing damage to the tube
- This product is not intended for use in potable water systems
- \* Sold in Packs of 10

### Technical data

Description	Unit	Value
Weight, max.	oz	10.72
Length (C (mm))	in	0.74
Thread	in	R 1/4
Tube number	-	6