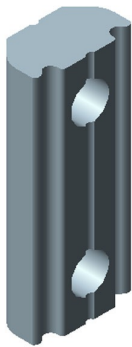


GWP 5-16 X Channel Nut

Item number: 02.14.419



- Used for replacements or for profile mounting of custom plates or brackets.
- Nuts can be easily dropped in the channel of JX Profile.

Technical data

| Description | Unit | Value |
|--------------|------|-------|
| Weight, max. | oz | 0.32 |
| Length (L) | in | 0.63 |
| Thread | in | M5 |