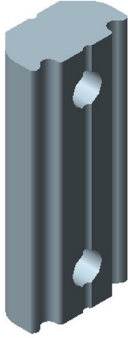


Datasheet

GWP 4-17 X Channel Nut

Item number: 02.14.412



- Used for replacements or for profile mounting of custom plates or brackets.
- Nuts can be easily dropped in the channel of JX Profile.

Technical data

Description	Unit	Value
Weight, max.	oz	0.32
Length (L)	in	0.67
Thread	in	M4