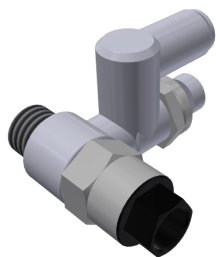


ASP430F-02-06S Flow Control with Pilot Check Valve

Item number: 02.14.171



- One-touch flow control
- Allows for fine control of gripper and cylinder speed without loss of clamping pressure
- Can be used on inlet or exhaust ports
- Pilot Check Valve gives added security by providing a back up air supply

Technical data

Description	Unit	Value
Feed pressure, max.	psi	1.45
Feed pressure, min.	psi	0.14
Air coupling	-	330
Length (A)	in	1.93
Thread	in	G 1/8
Thread	in	R 1/4
Tube number	-	6