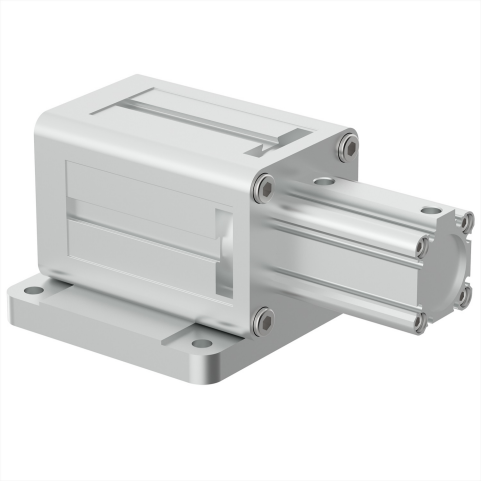


Reverse valve for blowers directly connected to the KVG120 and KVG150, Direct mounting, G 2"

Item number: 02.10.344



- These valves are Plug and Play, connected directly above the vacuum connectors on the KVG120 and KVG150.
- They have the function of suction or fast release of the product depending on the operation.
- They are made of anodized aluminium with POM-C seals.

Technical data

Description	Unit	Value
Material	-	Al
Weight, min.	oz	131.25

Dimensional drawings

