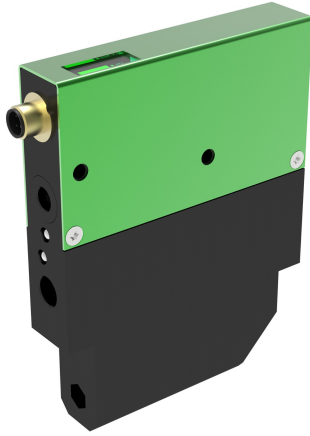


# Datasheet

## ACP-SX42PES

Item number: 02.09.627



### Technical data

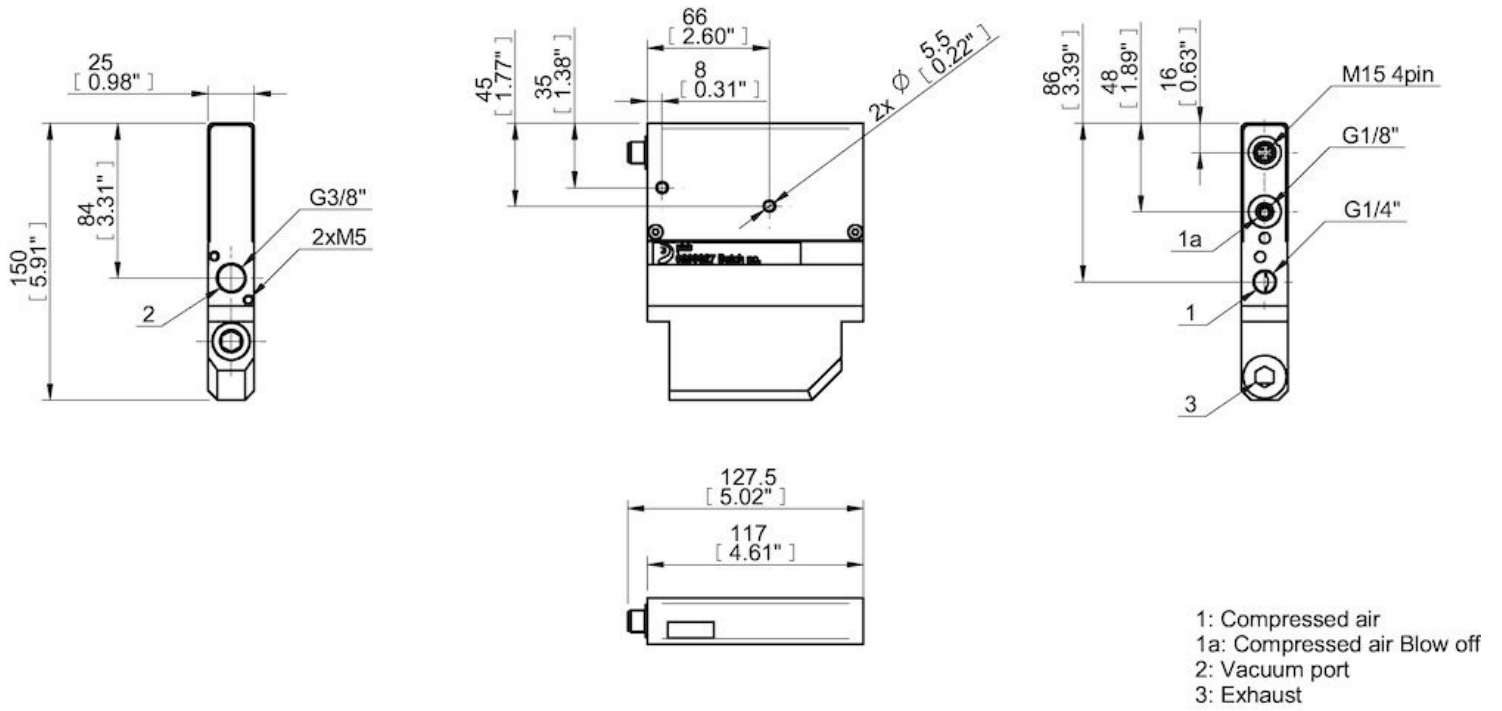
Description	Unit	Value
Material	-	Al, CuZn, NBR (FKM), PE, SS
Temperature, max.	°F	122.0
Temperature, min.	°F	14.0
Feed pressure	psi	0.068
Feed pressure, max.	psi	0.10
Electric connection	-	M12 4pin
Noise level, max.	dBA	90
Noise level, min.	dBA	80
Current, consumption	mA	200
Feed pressure, optimum, max.	psi	0.087
Feed pressure, optimum, min.	psi	0.058
Supply voltage, max.	VDC	26.4
Supply voltage, min.	VDC	21.6
Supply voltage, nominal	VDC	24

### Performance

Feed pressure psi	Air consumption scfm	Vacuum flow (scfm) at different vacuum levels (-inHg)												Max vacuum psi	
		0	2	5	8	11	14	17	20	23	26	29	32		35
63.80	4.68	0.93	0.77	0.56	0.38	0.22	0.15	0.089	0.030	0	0.015	0	0	0	≥13.050

Feed pressure psi	Air consumption scfm	Evacuation time (s/cf) to reach different vacuum levels (-inHg)												Max vacuum psi	
		2	5	8	11	14	17	20	23	26	28	29	29		29
63.80	4.68	0.010	0.023	0.042	0.071	0.12	0.19	0.34	0.73	0	0	0	0	0	≥13.050

## Dimensional drawings



## Values specified in this datasheet are tested at (unless otherwise stated):

- Room temperature (20°C [68°F] ± 3°C [5.5°F]).
- Standard atmosphere (101.3 [29.9 inHg] ± 1.0 kPa [0.3 inHg]).
- Compressed air quality, DIN ISO 8573-1 class 4.

## Tolerance and accuracy:

- Feed pressure tolerance ±0.02 MPa [2.9 psi]
- Vacuum flow/evacuation time accuracy ±10%.