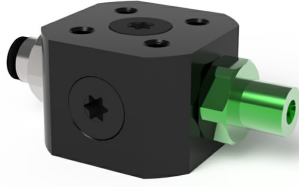


## COAX® in piGRIP® Si

Item number: 02.00.345



- Fully decentralized vacuum unit based on patented COAX® technology.
- Quick response time and very high energy efficiency.
- Easy system dimensioning – small risk for mistakes.
- Available with a variation of two-stage COAX® MICRO cartridges.
- Suitable for high vacuum flow.
- Suitable for extra capacity/dirt tolerance.

### Technical data

Description	Unit	Value
Material	-	Al, CuZn, Nitrile (NBR), PA
Temperature, max.	°F	176.0
Temperature, min.	°F	14.0
Weight, min.	oz	1.59
Feed pressure, max.	psi	0.10
Noise level, max.	dBA	61
Noise level, min.	dBA	55

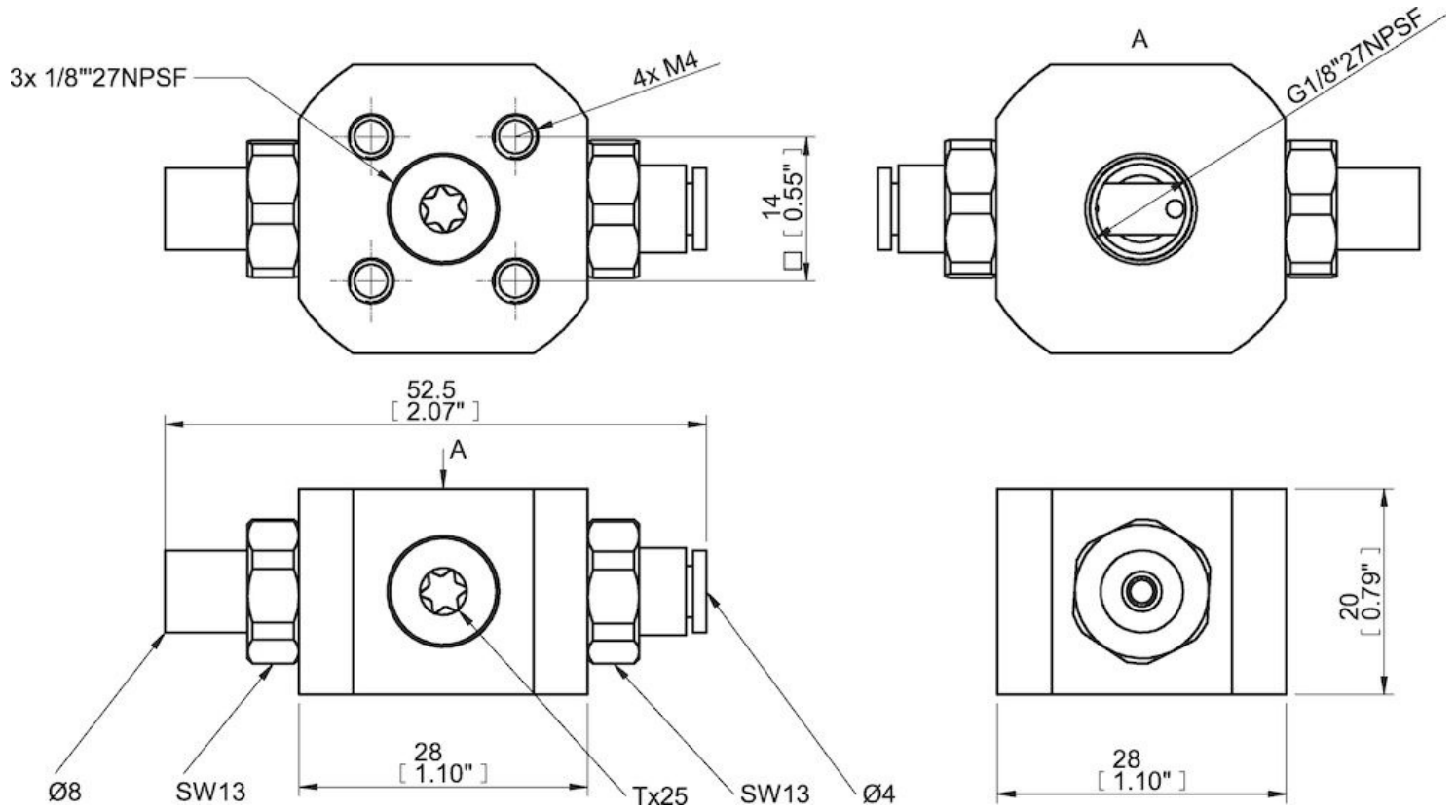
### Performance

Feed pressure psi	Air consumption scfm	Vacuum flow (scfm) at different vacuum levels (-inHg)											Max vacuum psi		
		0	2	5	8	11	14	17	20	23	26	29		32	35
87.0	0.25	0.083	0.062	0.035	0.024	0.021	0.018	0.012	0.0059	0	0	0	0	0	≥10.88

Feed pressure psi	Air consumption scfm	Evacuation time (s/cf) to reach different vacuum levels (-inHg)											Max vacuum psi		
		2	5	8	11	14	17	20	23	26	28	29		29	29
87.0	0.25	0.12	0.30	0.59	0.97	1.45	2.038	3.012	0	0	0	0	0	0	≥10.88

Feed pressure psi	Air consumption scfm	Blow flow (scfm) at different pressure levels (-inHg)											Max pressure psi			
		0	2	5	8	11	14	17	20	23	26	29		32	35	38
87.0	0.25	0.058	0.049	0.032	0.030	0.029	0.026	0.025	0.022	0	0	0	0	0	0	≥10.88

## Dimensional drawings



### Values specified in this datasheet are tested at (unless otherwise stated):

- Room temperature (20°C [68°F] ± 3°C [5.5°F]).
- Standard atmosphere (101.3 [29.9 inHg] ± 1.0 kPa [0.3 inHg]).
- Compressed air quality, DIN ISO 8573-1 class 4.

### Tolerance and accuracy:

- Feed pressure tolerance ±0.02 MPa [2.9 psi]
- Vacuum flow/evacuation time accuracy ±10%.

### Accessories

- 01.06.915 | 4x M4 screw top, 5x plug G1/8", flush mount
- 01.06.927 | M8 16 mm
- 01.06.949 | M8 27 mm, profile kit
- 01.08.488 | M6 22 mm screw, profile kit