

COAX® cartridge MINI Xi10-3, extra non-return valve

Item number: 01.20.289



- Three-stage COAX® cartridge – MINI.
- High vacuum flow at deep vacuum levels to 27.8 - inHg.
- Quick response time when deep vacuum is needed.
- Suitable for handling sealed objects with high pick-up speed.
- Large vacuum flow in relation to energy consumption.
- Used in VGS™3010 and VGS™3040.

Technical data

Description	Unit	Value
Material	-	Al, Nitrile (NBR), PA, SS
Temperature, max.	°F	176.0
Temperature, min.	°F	14.0
Weight, max.	oz	0.44
Weight, min.	oz	0.17
Feed pressure, max.	psi	0.10

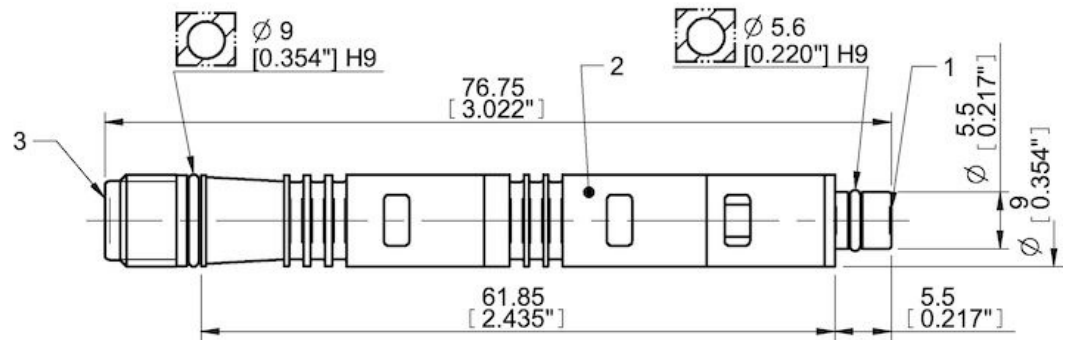
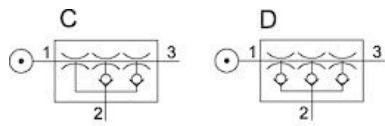
Performance

Feed pressure psi	Air consumption scfm	Vacuum flow (scfm) at different vacuum levels (-inHg)														Max vacuum psi
		0	2	5	8	11	14	17	20	23	26	29	32	35		
65.25	0.89	0.41	0.19	0.14	0.083	0.056	0.044	0.032	0.021	0	0.013	0.00089	0	0	≥13.34	
72.5	0.97	0.42	0.21	0.15	0.097	0.056	0.044	0.032	0.021	0	0.013	0.0032	0	0	≥13.63	
87.0	1.14	0.43	0.23	0.16	0.12	0.089	0.047	0.032	0.024	0	0.012	0.0030	0	0	≥13.48	

Feed pressure psi	Air consumption scfm	Evacuation time (s/cf) to reach different vacuum levels (-inHg)																	Max vacuum psi
		2	5	8	11	14	17	20	23	26	28	29	29	29					
65.25	0.89	0.030	0.083	0.16	0.30	0.44	0.65	1.0040	1.54	2.81	0	0	0	0	≥13.34				
72.5	0.97	0.027	0.077	0.15	0.27	0.44	0.65	1.0040	1.54	2.60	0	0	0	0	≥13.63				
87.0	1.14	0.027	0.071	0.13	0.21	0.35	0.56	0.89	1.39	2.54	0	0	0	0	≥13.48				

Feed pressure psi	Air consumption scfm	Blow flow (scfm) at different pressure levels (-inHg)														Max pressure psi	
		0	2	5	8	11	14	17	20	23	26	29	32	35	38		41
87.0	1.14	0.26	0.19	0.16	0.14	0.12	0.12	0.11	0.10	0.088	0	0	0	0	0	0	≥13.48

Dimensional drawings



Values specified in this datasheet are tested at (unless otherwise stated):

- Room temperature (20°C [68°F] ± 3°C [5.5°F]).
- Standard atmosphere (101.3 [29.9 inHg] ± 1.0 kPa [0.3 inHg]).
- Compressed air quality, DIN ISO 8573-1 class 4.

Tolerance and accuracy:

- Feed pressure tolerance ±0.02 MPa [2.9 psi]
- Vacuum flow/evacuation time accuracy ±10%.

Accessories

01.11.977 | Silencer COAX® MINI