

COAX® cartridge MIDI Xi40-3, holding cap, extra non-return valve

Item number: 01.18.760



- Three-stage COAX® cartridge – MIDI – with high initial vacuum flow.
- Deep end vacuum level, 28.1 -inHg.
- High vacuum flow at deep vacuum levels, 21-28.1 -inHg.
- Quick response time when deep vacuum is needed.
- The all-round characteristics makes it suitable for several type of vacuum applications.
- Used in P5010, P6010, P6040 and VGS™5010.

Technical data

| Description | Unit | Value |
|---------------------|------|--------------------|
| Material | - | Al, PA, SS, Viton® |
| Temperature, max. | °F | 176.0 |
| Temperature, min. | °F | 14.0 |
| Weight, max. | oz | 2.23 |
| Weight, min. | oz | 1.012 |
| Feed pressure, max. | psi | 0.10 |

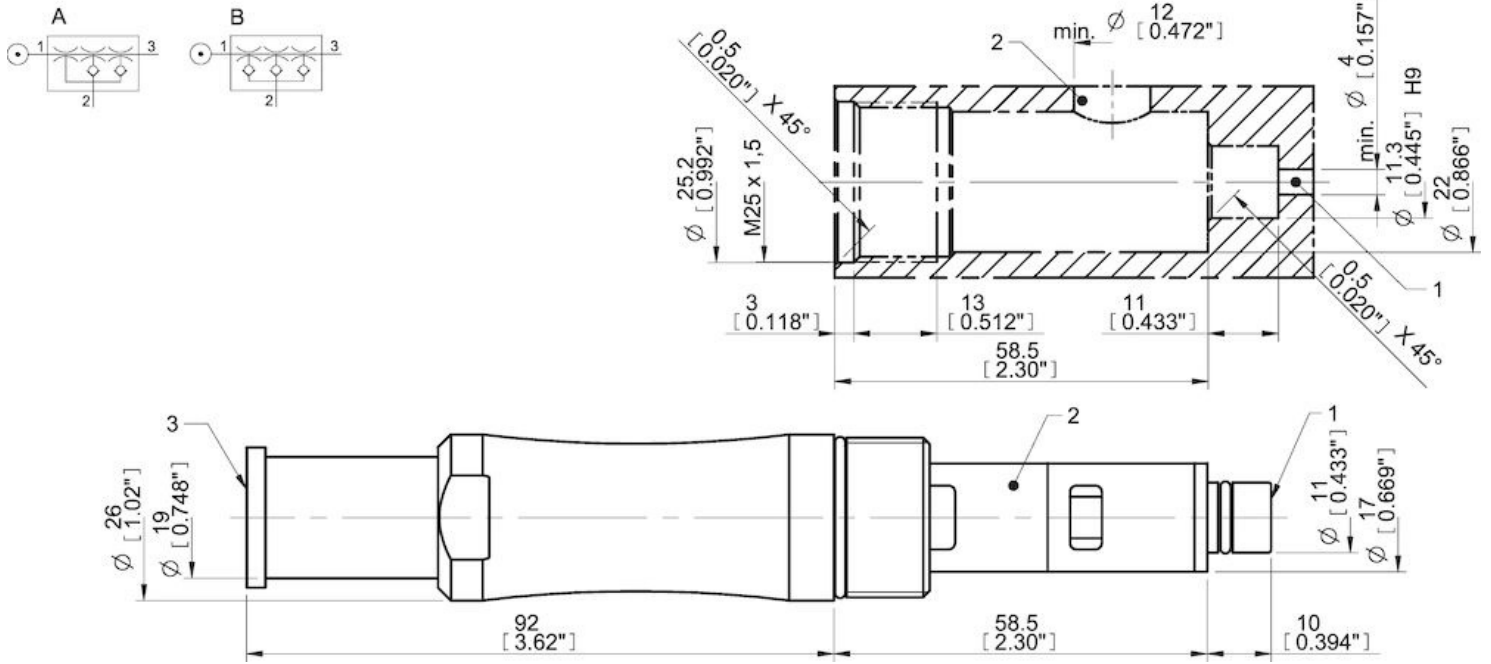
Performance

| Feed pressure psi | Air consumption scfm | Vacuum flow (scfm) at different vacuum levels (-inHg) | | | | | | | | | | | | | Max vacuum psi |
|----------------------|-------------------------|---|-------|------|------|------|------|------|-------|----|-------|--------|----|----|-------------------|
| | | 0 | 2 | 5 | 8 | 11 | 14 | 17 | 20 | 23 | 26 | 29 | 32 | 35 | |
| 65.25 | 3.88 | 1.74 | 0.89 | 0.59 | 0.38 | 0.22 | 0.17 | 0.13 | 0.094 | 0 | 0.053 | 0.0089 | 0 | 0 | ≥13.78 |
| 72.5 | 4.24 | 1.83 | 1.093 | 0.65 | 0.53 | 0.38 | 0.24 | 0.12 | 0.089 | 0 | 0.041 | 0.0059 | 0 | 0 | ≥13.63 |
| 87.0 | 4.94 | 1.74 | 0.94 | 0.65 | 0.47 | 0.27 | 0.15 | 0.12 | 0.092 | 0 | 0.047 | 0.0089 | 0 | 0 | ≥13.63 |

| Feed pressure psi | Air consumption scfm | Evacuation time (s/cf) to reach different vacuum levels (-inHg) | | | | | | | | | | | | | Max vacuum psi |
|----------------------|-------------------------|---|-------|-------|-------|-------|------|------|------|------|----|----|----|----|-------------------|
| | | 2 | 5 | 8 | 11 | 14 | 17 | 20 | 23 | 26 | 28 | 29 | 29 | 29 | |
| 65.25 | 3.88 | 0.0065 | 0.018 | 0.035 | 0.065 | 0.11 | 0.17 | 0.25 | 0.35 | 0.65 | 0 | 0 | 0 | 0 | ≥13.78 |
| 72.5 | 4.24 | 0.0059 | 0.015 | 0.030 | 0.059 | 0.089 | 0.12 | 0.21 | 0.35 | 0.71 | 0 | 0 | 0 | 0 | ≥13.63 |
| 87.0 | 4.94 | 0.0059 | 0.016 | 0.030 | 0.050 | 0.077 | 0.13 | 0.21 | 0.35 | 0.71 | 0 | 0 | 0 | 0 | ≥13.63 |

| Feed pressure psi | Air consumption scfm | Blow flow (scfm) at different pressure levels (-inHg) | | | | | | | | | | | | | Max pressure psi | | |
|----------------------|-------------------------|---|------|------|------|------|------|------|------|------|------|----|----|----|---------------------|----|--------|
| | | 0 | 2 | 5 | 8 | 11 | 14 | 17 | 20 | 23 | 26 | 29 | 32 | 35 | | 38 | 41 |
| 87.0 | 4.94 | 1.22 | 0.90 | 0.74 | 0.67 | 0.57 | 0.51 | 0.49 | 0.47 | 0.43 | 0.37 | 0 | 0 | 0 | 0 | 0 | ≥13.63 |

Dimensional drawings



Values specified in this datasheet are tested at (unless otherwise stated):

- Room temperature (20°C [68°F] ± 3°C [5.5°F]).
- Standard atmosphere (101.3 [29.9 inHg] ± 1.0 kPa [0.3 inHg]).
- Compressed air quality, DIN ISO 8573-1 class 4.

Tolerance and accuracy:

- Feed pressure tolerance ±0.02 MPa [2.9 psi]
- Vacuum flow/evacuation time accuracy ±10%.

Accessories

01.11.976 | Silencer COAX® MIDI

Spare parts

- 01.09.531 | Spare part kit Midi COAX
- 01.24.897 | Spare part kit Midi COAX Viton
- 01.07.131 | Cartridge holder Midi-3 cpl.