

## COAX® cartridge MIDI Xi40-2, extra non-return valve

Item number: 01.18.748



- Two-stage COAX® cartridge – MIDI – with small mounting dimensions for limited spaces.
- Deep end vacuum level, 28.1 -inHg.
- High vacuum flow at deep vacuum levels, 21 to 28.1 -inHg.
- Quick response time when deep vacuum is needed.
- The all-round characteristics makes it suitable for several type of vacuum applications.
- Used in P5010 and VGS™5010.

### Technical data

Description	Unit	Value
Material	-	Al, Nitrile (NBR), PA, SS
Temperature, max.	°F	176.0
Temperature, min.	°F	14.0
Weight, max.	oz	1.93
Weight, min.	oz	0.65
Feed pressure, max.	psi	0.10

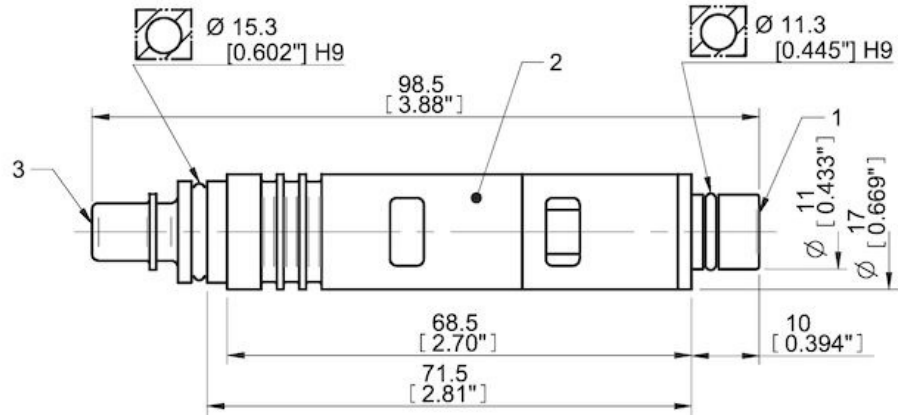
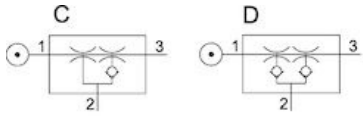
### Performance

Feed pressure psi	Air consumption scfm	Vacuum flow (scfm) at different vacuum levels (-inHg)												Max vacuum psi	
		0	2	5	8	11	14	17	20	23	26	29	32		35
65.25	3.88	0.83	0.68	0.47	0.30	0.22	0.17	0.13	0.094	0	0.053	0.0089	0	0	≥13.78
72.5	4.24	0.83	0.71	0.53	0.35	0.21	0.16	0.12	0.089	0	0.041	0.0059	0	0	≥13.63
87.0	4.94	0.80	0.71	0.59	0.44	0.27	0.15	0.12	0.092	0	0.047	0.0089	0	0	≥13.63

Feed pressure psi	Air consumption scfm	Evacuation time (s/cf) to reach different vacuum levels (-inHg)												Max vacuum psi	
		2	5	8	11	14	17	20	23	26	28	29	29		29
65.25	3.88	0.012	0.027	0.050	0.083	0.13	0.19	0.27	0.38	0.68	0	0	0	0	≥13.78
72.5	4.24	0.012	0.027	0.044	0.077	0.12	0.19	0.27	0.41	0.77	0	0	0	0	≥13.63
87.0	4.94	0.012	0.024	0.041	0.068	0.11	0.17	0.26	0.38	0.68	0	0	0	0	≥13.63

Feed pressure psi	Air consumption scfm	Blow flow (scfm) at different pressure levels (-inHg)												Max pressure psi			
		0	2	5	8	11	14	17	20	23	26	29	32		35	38	41
87.0	4.94	0.74	0.72	0.67	0.59	0.49	0.49	0.48	0.45	0.41	0.35	0	0	0	0	0	≥13.63

## Dimensional drawings



Values specified in this datasheet are tested at (unless otherwise stated):

- Room temperature (20°C [68°F] ± 3°C [5.5°F]).
- Standard atmosphere (101.3 [29.9 inHg] ± 1.0 kPa [0.3 inHg]).
- Compressed air quality, DIN ISO 8573-1 class 4.

### Tolerance and accuracy:

- Feed pressure tolerance ±0.02 MPa [2.9 psi]
- Vacuum flow/evacuation time accuracy ±10%.

### Accessories

01.11.976 | Silencer COAX® MIDI

### Spare parts

- 01.09.531 | Spare part kit Midi COAX
- 01.24.897 | Spare part kit Midi COAX Viton
- 01.07.131 | Cartridge holder Midi-3 cpl.