

## COAX® cartridge MIDI Xi40-2

Item number: 01.18.747



- Two-stage COAX® cartridge – MIDI – with small mounting dimensions for limited spaces.
- Deep end vacuum level, 28.1 -inHg.
- High vacuum flow at deep vacuum levels, 21 to 28.1 -inHg.
- Quick response time when deep vacuum is needed.
- The all-round characteristics makes it suitable for several type of vacuum applications.
- Used in P5010 and VGS™5010.

### Technical data

| Description         | Unit | Value                     |
|---------------------|------|---------------------------|
| Material            | -    | Al, Nitrile (NBR), PA, SS |
| Temperature, max.   | °F   | 176.0                     |
| Temperature, min.   | °F   | 14.0                      |
| Weight, max.        | oz   | 1.93                      |
| Weight, min.        | oz   | 0.65                      |
| Feed pressure, max. | psi  | 0.10                      |

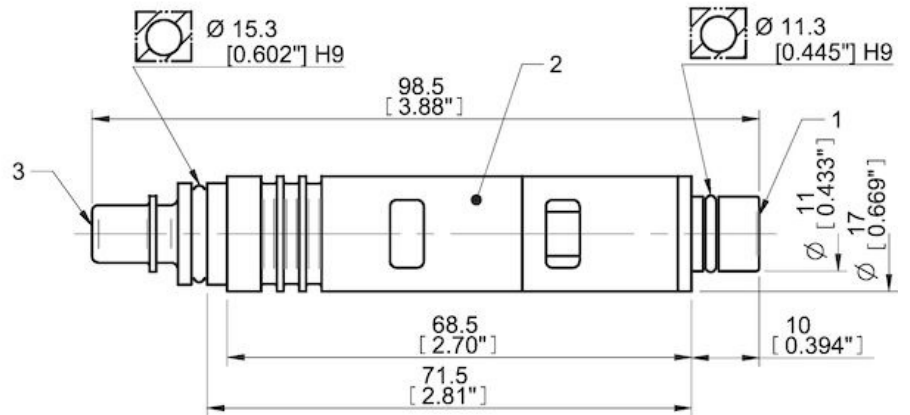
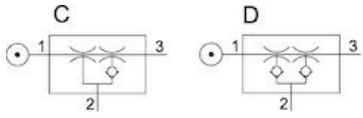
### Performance

| Feed pressure<br>psi | Air consumption<br>scfm | Vacuum flow (scfm) at different vacuum levels (-inHg) |      |      |      |      |      |      |       |    |       |        |    | Max vacuum<br>psi |        |
|----------------------|-------------------------|---|------|------|------|------|------|------|-------|----|-------|--------|----|-------------------|--------|
|                      |                         | 0   | 2    | 5    | 8    | 11   | 14   | 17   | 20    | 23 | 26    | 29     | 32 |                   | 35     |
| 65.25                | 3.88                    | 0.83  | 0.68 | 0.47 | 0.30 | 0.22 | 0.17 | 0.13 | 0.094 | 0  | 0.053 | 0.0089 | 0  | 0                 | ≥13.78 |
| 72.5                 | 4.24                    | 0.83  | 0.71 | 0.53 | 0.35 | 0.21 | 0.16 | 0.12 | 0.089 | 0  | 0.041 | 0.0059 | 0  | 0                 | ≥13.63 |
| 87.0                 | 4.94                    | 0.80  | 0.71 | 0.59 | 0.44 | 0.27 | 0.15 | 0.12 | 0.092 | 0  | 0.047 | 0.0089 | 0  | 0                 | ≥13.63 |

| Feed pressure<br>psi | Air consumption<br>scfm | Evacuation time (s/cf) to reach different vacuum levels (-inHg) |       |       |       |      |      |      |      |      |    |    |    | Max vacuum<br>psi |        |
|----------------------|-------------------------|---|-------|-------|-------|------|------|------|------|------|----|----|----|-------------------|--------|
|                      |                         | 2   | 5     | 8     | 11    | 14   | 17   | 20   | 23   | 26   | 28 | 29 | 29 |                   | 29     |
| 65.25                | 3.88                    | 0.012   | 0.027 | 0.050 | 0.083 | 0.13 | 0.19 | 0.27 | 0.38 | 0.68 | 0  | 0  | 0  | 0                 | ≥13.78 |
| 72.5                 | 4.24                    | 0.012   | 0.027 | 0.044 | 0.077 | 0.12 | 0.19 | 0.27 | 0.41 | 0.77 | 0  | 0  | 0  | 0                 | ≥13.63 |
| 87.0                 | 4.94                    | 0.012   | 0.024 | 0.041 | 0.068 | 0.11 | 0.17 | 0.26 | 0.38 | 0.68 | 0  | 0  | 0  | 0                 | ≥13.63 |

| Feed pressure<br>psi | Air consumption<br>scfm | Blow flow (scfm) at different pressure levels (-inHg) |      |      |      |      |      |      |      |      |      |    |    | Max pressure<br>psi |    |    |        |
|----------------------|-------------------------|---|------|------|------|------|------|------|------|------|------|----|----|---------------------|----|----|--------|
|                      |                         | 0   | 2    | 5    | 8    | 11   | 14   | 17   | 20   | 23   | 26   | 29 | 32 |                     | 35 | 38 | 41     |
| 87.0                 | 4.94                    | 0.74  | 0.72 | 0.67 | 0.59 | 0.49 | 0.49 | 0.48 | 0.45 | 0.41 | 0.35 | 0  | 0  | 0                   | 0  | 0  | ≥13.63 |

## Dimensional drawings



Values specified in this datasheet are tested at (unless otherwise stated):

- Room temperature (20°C [68°F] ± 3°C [5.5°F]).
- Standard atmosphere (101.3 [29.9 inHg] ± 1.0 kPa [0.3 inHg]).
- Compressed air quality, DIN ISO 8573-1 class 4.

### Tolerance and accuracy:

- Feed pressure tolerance ±0.02 MPa [2.9 psi]
- Vacuum flow/evacuation time accuracy ±10%.

### Accessories

01.11.976 | Silencer COAX® MIDI

### Spare parts

01.09.531 | Spare part kit Midi COAX  
01.24.897 | Spare part kit Midi COAX Viton  
01.07.130 | Cartridge holder Midi-2 cpl.