

COAX® cartridge MINI Si08-2

Item number: 01.13.583



- Two-stage COAX® cartridge - MINI - with small mounting dimensions.
- Large vacuum flow in relation to energy consumption.
- Good for handling porous materials or if surface leakage is present.
- Used in VGS™3010 and VGS™3040.

Technical data

| Description | Unit | Value |
|---------------------|------|---------------------------|
| Material | - | Al, Nitrile (NBR), PA, SS |
| Temperature, max. | °F | 176.0 |
| Temperature, min. | °F | 14.0 |
| Weight, max. | oz | 0.35 |
| Weight, min. | oz | 0.099 |
| Feed pressure, max. | psi | 0.10 |

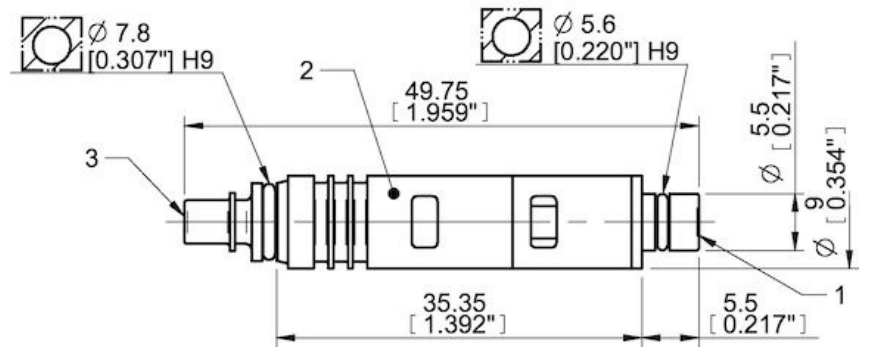
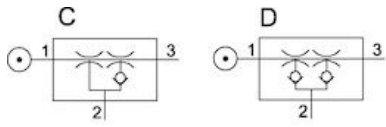
Performance

| Feed pressure psi | Air consumption scfm | Vacuum flow (scfm) at different vacuum levels (-inHg) | | | | | | | | | | | Max vacuum psi | | | | |
|----------------------|-------------------------|---|------|------|-------|-------|-------|--------|--------|----|----|----|-------------------|----|----|---|--------|
| | | 0 | 2 | 5 | 8 | 11 | 14 | 17 | 20 | 23 | 26 | 29 | | 32 | 35 | | |
| 58.0 | 0.66 | 0.21 | 0.16 | 0.10 | 0.077 | 0.053 | 0.027 | 0.0030 | 0 | 0 | 0 | 0 | 0 | 0 | 0 | 0 | ≥8.70 |
| 72.5 | 0.81 | 0.23 | 0.18 | 0.13 | 0.086 | 0.068 | 0.044 | 0.024 | 0.0030 | 0 | 0 | 0 | 0 | 0 | 0 | 0 | ≥10.15 |
| 87.0 | 0.93 | 0.23 | 0.20 | 0.15 | 0.097 | 0.068 | 0.047 | 0.035 | 0.024 | 0 | 0 | 0 | 0 | 0 | 0 | 0 | ≥10.88 |

| Feed pressure psi | Air consumption scfm | Evacuation time (s/cf) to reach different vacuum levels (-inHg) | | | | | | | | | | | Max vacuum psi | | | | |
|----------------------|-------------------------|---|-------|------|------|------|------|------|----|----|----|----|-------------------|----|----|---|--------|
| | | 2 | 5 | 8 | 11 | 14 | 17 | 20 | 23 | 26 | 28 | 29 | | 29 | 29 | | |
| 58.0 | 0.66 | 0.047 | 0.12 | 0.21 | 0.35 | 0.56 | 1.15 | 0 | 0 | 0 | 0 | 0 | 0 | 0 | 0 | 0 | ≥8.70 |
| 72.5 | 0.81 | 0.041 | 0.10 | 0.18 | 0.30 | 0.44 | 0.71 | 1.36 | 0 | 0 | 0 | 0 | 0 | 0 | 0 | 0 | ≥10.15 |
| 87.0 | 0.93 | 0.041 | 0.092 | 0.16 | 0.27 | 0.41 | 0.62 | 0.92 | 0 | 0 | 0 | 0 | 0 | 0 | 0 | 0 | ≥10.88 |

| Feed pressure psi | Air consumption scfm | Blow flow (scfm) at different pressure levels (-inHg) | | | | | | | | | | | Max pressure psi | | | | | |
|----------------------|-------------------------|---|------|------|------|------|------|-------|-------|----|----|----|---------------------|----|----|----|----|--------|
| | | 0 | 2 | 5 | 8 | 11 | 14 | 17 | 20 | 23 | 26 | 29 | | 32 | 35 | 38 | 41 | |
| 87.0 | 0.93 | 0.18 | 0.16 | 0.14 | 0.12 | 0.11 | 0.11 | 0.094 | 0.077 | 0 | 0 | 0 | 0 | 0 | 0 | 0 | 0 | ≥10.88 |

Dimensional drawings



Values specified in this datasheet are tested at (unless otherwise stated):

- Room temperature (20°C [68°F] ± 3°C [5.5°F]).
- Standard atmosphere (101.3 [29.9 inHg] ± 1.0 kPa [0.3 inHg]).
- Compressed air quality, DIN ISO 8573-1 class 4.

Tolerance and accuracy:

- Feed pressure tolerance ±0.02 MPa [2.9 psi]
- Vacuum flow/evacuation time accuracy ±10%.

Accessories

- 01.06.344 | Exhaust adapter
- 01.11.977 | Silencer COAX® MINI