

COAX® cartridge MIDI Pi48-2, holding cap

Item number: 01.07.127



- Two-stage COAX® cartridge - MIDI - with small mounting dimension for limited spaces.
- Vacuum level to 27 -inHg at low feed pressure.
- High system reliability in case of fluctuating or low feed pressure.
- Used in P5010 and VGS™5010.

Technical data

| Description | Unit | Value |
|---------------------|------|---------------------------|
| Material | - | Al, Nitrile (NBR), PA, SS |
| Temperature, max. | °F | 176.0 |
| Temperature, min. | °F | 14.0 |
| Weight, max. | oz | 2.010 |
| Weight, min. | oz | 0.95 |
| Feed pressure, max. | psi | 0.10 |

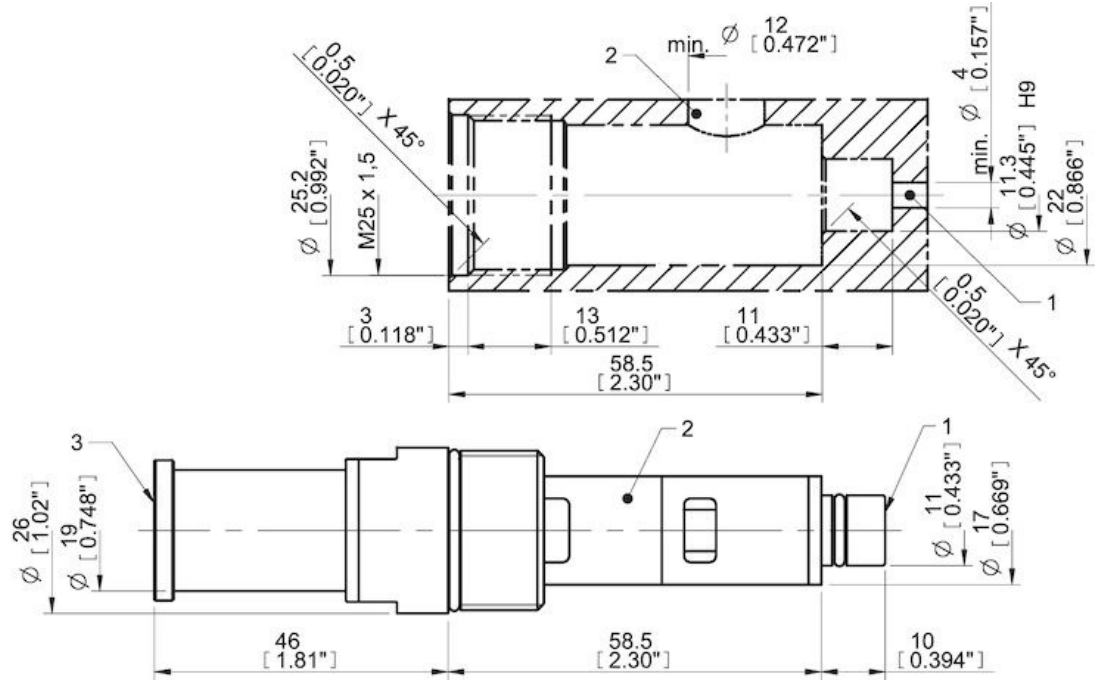
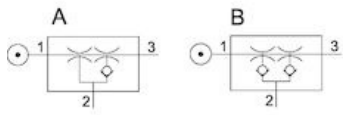
Performance

| Feed pressure psi | Air consumption scfm | Vacuum flow (scfm) at different vacuum levels (-inHg) | | | | | | | | | | | | | Max vacuum psi | | | |
|----------------------|-------------------------|---|------|------|------|------|-------|-------|-------|----|-------|----|----|----|-------------------|---|---|---------|
| | | 0 | 2 | 5 | 8 | 11 | 14 | 17 | 20 | 23 | 26 | 29 | 32 | 35 | | | | |
| 24.65 | 2.90 | 0.77 | 0.50 | 0.35 | 0.21 | 0.12 | 0.035 | 0 | 0 | 0 | 0 | 0 | 0 | 0 | 0 | 0 | 0 | ≥7.98 |
| 31.90 | 3.43 | 0.80 | 0.59 | 0.44 | 0.27 | 0.16 | 0.13 | 0.077 | 0.021 | 0 | 0 | 0 | 0 | 0 | 0 | 0 | 0 | ≥10.58 |
| 43.5 | 4.24 | 0.83 | 0.74 | 0.53 | 0.32 | 0.19 | 0.15 | 0.10 | 0.074 | 0 | 0.030 | 0 | 0 | 0 | 0 | 0 | 0 | ≥13.050 |
| 58.0 | 5.38 | 0.83 | 0.74 | 0.62 | 0.44 | 0.32 | 0.19 | 0.11 | 0.077 | 0 | 0.024 | 0 | 0 | 0 | 0 | 0 | 0 | ≥12.47 |

| Feed pressure psi | Air consumption scfm | Evacuation time (s/cf) to reach different vacuum levels (-inHg) | | | | | | | | | | | | | Max vacuum psi | | | |
|----------------------|-------------------------|---|-------|-------|-------|-------|------|------|------|------|----|----|----|----|-------------------|---|---|---------|
| | | 2 | 5 | 8 | 11 | 14 | 17 | 20 | 23 | 26 | 28 | 29 | 29 | 29 | | | | |
| 24.65 | 2.90 | 0.012 | 0.030 | 0.059 | 0.12 | 0.30 | 0 | 0 | 0 | 0 | 0 | 0 | 0 | 0 | 0 | 0 | 0 | ≥7.98 |
| 31.90 | 3.43 | 0.010 | 0.027 | 0.053 | 0.094 | 0.15 | 0.24 | 0.50 | 0 | 0 | 0 | 0 | 0 | 0 | 0 | 0 | 0 | ≥10.58 |
| 43.5 | 4.24 | 0.011 | 0.025 | 0.045 | 0.079 | 0.13 | 0.20 | 0.30 | 0.47 | 0 | 0 | 0 | 0 | 0 | 0 | 0 | 0 | ≥13.050 |
| 58.0 | 5.38 | 0.0089 | 0.019 | 0.035 | 0.056 | 0.089 | 0.18 | 0.27 | 0.50 | 1.33 | 0 | 0 | 0 | 0 | 0 | 0 | 0 | ≥12.47 |

| Feed pressure psi | Air consumption scfm | Blow flow (scfm) at different pressure levels (-inHg) | | | | | | | | | | | | | Max pressure psi | | | |
|----------------------|-------------------------|---|------|------|------|------|------|------|------|------|------|------|------|------|---------------------|------|----|----|
| | | 0 | 2 | 5 | 8 | 11 | 14 | 17 | 20 | 23 | 26 | 29 | 32 | 35 | | 38 | 41 | |
| 87.0 | 7.42 | 0.89 | 0.89 | 0.89 | 0.88 | 0.86 | 0.80 | 0.73 | 0.65 | 0.65 | 0.65 | 0.65 | 0.65 | 0.62 | 0.58 | 0.53 | 0 | ≥0 |

Dimensional drawings



Values specified in this datasheet are tested at (unless otherwise stated):

- Room temperature (20°C [68°F] ± 3°C [5.5°F]).
- Standard atmosphere (101.3 [29.9 inHg] ± 1.0 kPa [0.3 inHg]).
- Compressed air quality, DIN ISO 8573-1 class 4.

Tolerance and accuracy:

- Feed pressure tolerance ±0.02 MPa [2.9 psi]
- Vacuum flow/evacuation time accuracy ±10%.

Accessories

01.11.976 | Silencer COAX® MIDI

Spare parts

- 01.09.531 | Spare part kit Midi COAX
- 01.24.897 | Spare part kit Midi COAX Viton
- 01.07.130 | Cartridge holder Midi-2 cpl.