

COAX® cartridge MIDI Pi48-2

Item number: 01.07.125



- Two-stage COAX® cartridge - MIDI - with small mounting dimension for limited spaces.
- Vacuum level to 27 -inHg at low feed pressure.
- High system reliability in case of fluctuating or low feed pressure.
- Used in P5010 and VGS™5010.

Technical data

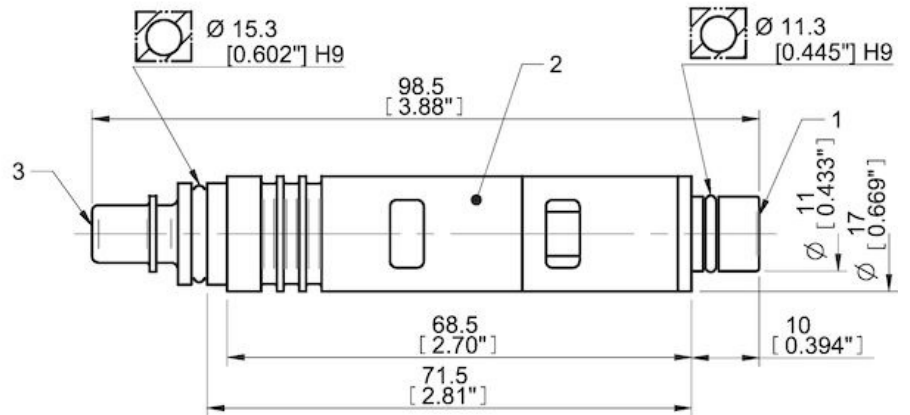
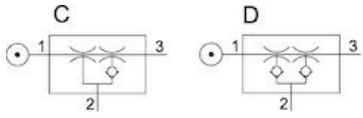
Description	Unit	Value
Material	-	Al, Nitrile (NBR), PA, SS
Temperature, max.	°F	176.0
Temperature, min.	°F	14.0
Weight, max.	oz	2.010
Weight, min.	oz	0.95
Feed pressure, max.	psi	0.10

Performance

Feed pressure psi	Air consumption scfm	Vacuum flow (scfm) at different vacuum levels (-inHg)													Max vacuum psi			
		0	2	5	8	11	14	17	20	23	26	29	32	35				
24.65	2.90	0.77	0.50	0.35	0.21	0.12	0.035	0	0	0	0	0	0	0	0	0	0	≥7.98
31.90	3.43	0.80	0.59	0.44	0.27	0.16	0.13	0.077	0.021	0	0	0	0	0	0	0	0	≥10.58
43.5	4.24	0.83	0.74	0.53	0.32	0.19	0.15	0.10	0.074	0	0.030	0	0	0	0	0	0	≥13.050
58.0	5.38	0.83	0.74	0.62	0.44	0.32	0.19	0.11	0.077	0	0.024	0	0	0	0	0	0	≥12.47

Feed pressure psi	Air consumption scfm	Evacuation time (s/cf) to reach different vacuum levels (-inHg)													Max vacuum psi			
		2	5	8	11	14	17	20	23	26	28	29	29	29				
24.65	2.90	0.012	0.030	0.059	0.12	0.30	0	0	0	0	0	0	0	0	0	0	0	≥7.98
31.90	3.43	0.010	0.027	0.053	0.094	0.15	0.24	0.50	0	0	0	0	0	0	0	0	0	≥10.58
43.5	4.24	0.011	0.025	0.045	0.079	0.13	0.20	0.30	0.47	0	0	0	0	0	0	0	0	≥13.050
58.0	5.38	0.0089	0.019	0.035	0.056	0.089	0.18	0.27	0.50	1.33	0	0	0	0	0	0	0	≥12.47

Dimensional drawings



Values specified in this datasheet are tested at (unless otherwise stated):

- Room temperature (20°C [68°F] ± 3°C [5.5°F]).
- Standard atmosphere (101.3 [29.9 inHg] ± 1.0 kPa [0.3 inHg]).
- Compressed air quality, DIN ISO 8573-1 class 4.

Tolerance and accuracy:

- Feed pressure tolerance ±0.02 MPa [2.9 psi]
- Vacuum flow/evacuation time accuracy ±10%.

Accessories

01.11.976 | Silencer COAX® MIDI

Spare parts

01.09.531 | Spare part kit Midi COAX
01.24.897 | Spare part kit Midi COAX Viton
01.07.130 | Cartridge holder Midi-2 cpl.