

Datasheet

Lab Vac LVH40K6, Viton® sealings, Kalrez flap valves

Item number: 01.03.684



- Vacuum pumps tailor-made for laboratory applications, such as degassing, vacuum filtering, gel drying and rotation evaporation.
- High vacuum levels to 20 mbar abs. with a maximum vacuum flow of 5.3 scfm.
- No risk for "back draft" which can cause damaged test samples.
- Low noise level.
- Easy to install and virtually no maintenance.
- Energy efficient vacuum pumps based on environmental friendly technology.
- High chemical resistance, option with Kalrez sealing material makes the chemical resistance unsurpassed.

Technical data

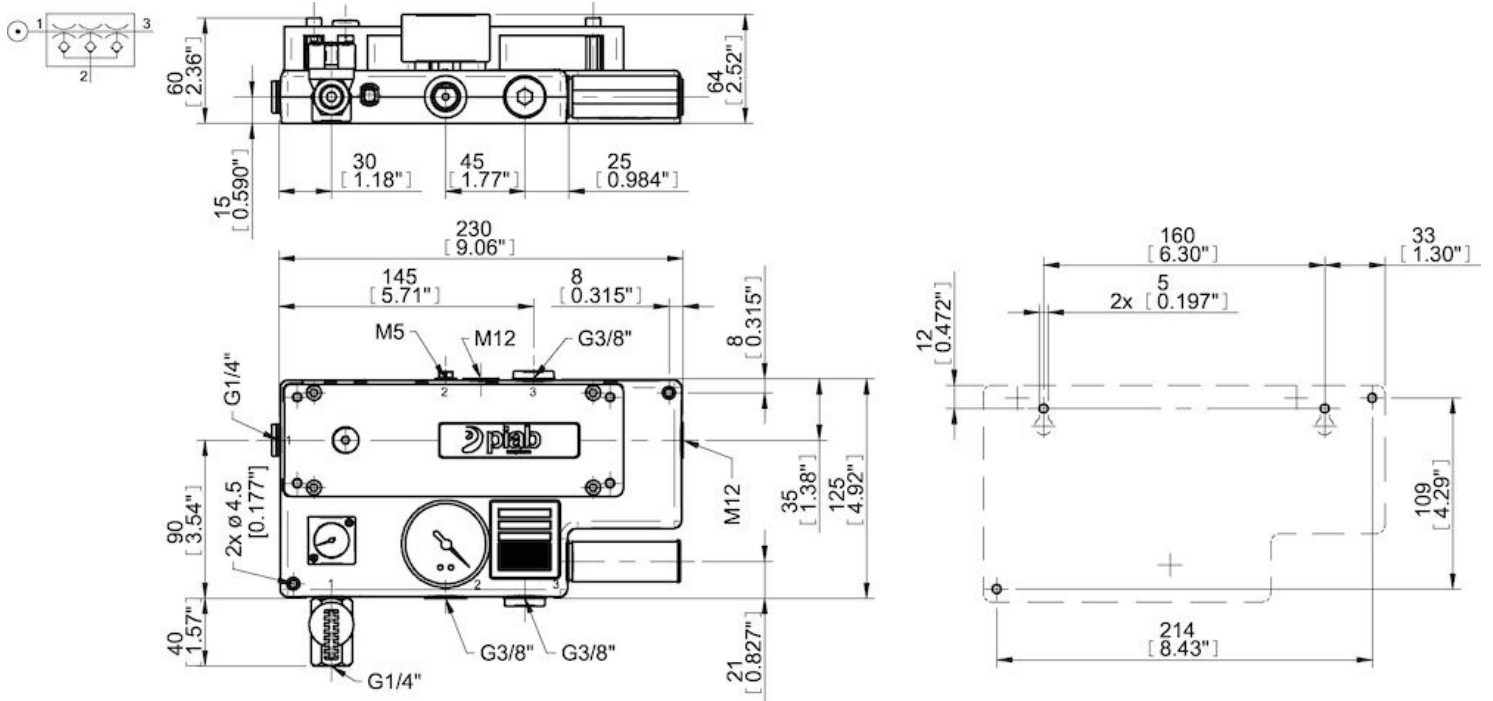
Description	Unit	Value
Material	-	Al, Kalrez, PPS, SS, Viton®
Temperature, max.	°F	230.0
Temperature, min.	°F	-4.0
Weight, min.	oz	93.75
Feed pressure, max.	psi	0.10
Noise level, max.	dBA	66
Noise level, min.	dBA	62

Performance

Feed pressure psi	Air consumption scfm	Vacuum flow (scfm) at different vacuum levels (-inHg)													Max vacuum psi
		0	2	5	8	11	14	17	20	23	26	29	32	35	
87.0	5.51	0.74	0.53	0.38	0.21	0.16	0.10	0.071	0.047	0	0.035	0.018	0.0059	0	≥14.21

Feed pressure psi	Air consumption scfm	Evacuation time (s/cf) to reach different vacuum levels (-inHg)													Max vacuum psi
		2	5	8	11	14	17	20	23	26	28	29	29	29	
87.0	5.51	0.012	0.027	0.053	0.12	0.21	0.32	0.49	0.73	1.15	1.77	0	0	0	≥14.21

Dimensional drawings



Values specified in this datasheet are tested at (unless otherwise stated):

- Room temperature (20°C [68°F] ± 3°C [5.5°F]).
- Standard atmosphere (101.3 [29.9 inHg] ± 1.0 kPa [0.3 inHg]).
- Compressed air quality, DIN ISO 8573-1 class 4.

Tolerance and accuracy:

- Feed pressure tolerance ±0.02 MPa [2.9 psi]
- Vacuum flow/evacuation time accuracy ±10%.

Accessories

01.00.947 | Vacuum filter 0.3 µm

01.18.100 | piSAVE® onoff with small hysteresis

Spare parts

01.04.948 | Spare part kit Lab Vac 40-80, Kalrez/Viton®