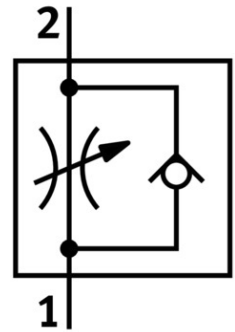



One-way flow control valve VFOE-LS-T-G18-Q8

Part number: 8068749

FESTO



 General operating condition

Data sheet

Feature	Value
Valve function	Supply air flow control non-return function
Pneumatic connection 1	QS-8
Pneumatic connection 2	G1/8
Actuation type	Manual
Adjusting element	Rotary knob with detent
Type of mounting	Screw-in
Standard nominal flow rate in flow control direction	170 l/min
Standard nominal flow rate in non-return direction	130 l/min ... 200 l/min
Ambient temperature	-10 °C ... 60 °C
Housing material	PBT
Explosion prevention and protection	Observe the information on the certificate Zone 1 (ATEX) Zone 2 (ATEX) Zone 21 (ATEX) Zone 22 (ATEX)
Mounting position	Any
Symbol	00991453
Width across flats	13 mm
Rotatability	360 deg/continuous swiveling not permissible
Operating pressure for entire temperature range	0.02 MPa ... 1 MPa
Operating pressure for entire temperature range	0.2 bar ... 10 bar
Operating pressure for entire temperature range	2.9 psi ... 145 psi
Standard flow rate in flow control direction 6 -> 0 bar	270 l/min
Standard flow rate in non-return direction at 6 -> 0 bar	320 l/min ... 390 l/min
Operating medium	Compressed air as per ISO 8573-1:2010 [7:4:4]
Information on operating and pilot media	Operation with oil lubrication possible (required for further use)
LABS (PWIS) conformity	VDMA24364 zone III
Cleanroom class	Class 4 according to ISO 14644-1
Temperature of medium	-10 °C ... 60 °C
Max. tightening torque	6 Nm

Feature	Value
Nominal tightening torque	5 Nm
Tolerance for nominal tightening torque	± 20%
Product weight	9.5 g
Note on materials	RoHS-compliant
Cover material	PBT
Material of dynamic seals	HNBR
Threaded bolt material	Steel, galvanized
Releasing ring material	PBT
Static seal material	NBR