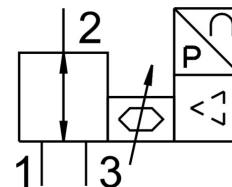


Proportional pressure control valve VEAA-B-3-D2-F-A4-1R1

Part number: 8046893

FESTO



[PDF](#) General operating condition

Data sheet

Feature	Value
Valve function	3-way proportional pressure control valve
Type of control	Direct
Reset method	Mechanical spring
Actuation type	Electrical
Mounting position	Any
Sealing principle	Soft
Symbol	00995607
Ambient temperature	0 °C ... 50 °C
Temperature of medium	5 °C ... 50 °C
Storage temperature	-20 °C ... 70 °C
Dimensions W x L x H	15 mm x 61 mm x 66 mm
Pneumatic connection 1	Flange
Pneumatic connection 2	Flange
Pneumatic connection 3	Flange
Seals material	NBR
Type of mounting	Optionally: With through-hole With accessories
Inlet pressure 1 MPa	0 MPa ... 1.1 MPa
Inlet pressure 1	0 bar ... 11 bar
Inlet pressure 1 psi	0 psi ... 159.5 psi
Output pressure 2	0.001 MPa ... 0.2 MPa
Outlet pressure 2	0.01 bar ... 2 bar
Output pressure 2	0.145 psi ... 29 psi
Standard nominal flow rate	≥7 l/min
Standard nominal flow rate 2-3	≥3 l/min
Linearity error FS	0.5 %
Repetition accuracy in ± %FS	0.4 %FS
Hysteresis in ± %FS	0.25 %FS
Temperature coefficient	0.05 %/K
Absolute accuracy in ± %FS at room temperature	0.75 %FS
Product weight	55 g
Operating medium	Compressed air as per ISO 8573-1:2010 [7:4:4] Inert gas
Information on operating and pilot media	Operation with oil lubrication not possible

Feature	Value
Degree of protection	IP65
Certification	RCM compliance mark
KC characters	KC EMC
CE marking (see declaration of conformity)	As per EU EMC directive As per EU RoHS directive
UKCA marking (see declaration of conformity)	To UK instructions for EMC To UK RoHS instructions
Note on materials	RoHS-compliant
LABS (PWIS) conformity	VDMA24364 zone III
Corrosion resistance class (CRC)	2 - Moderate corrosion stress
DC operating voltage range	19 V ... 29 V
Nominal operating voltage DC	24 V
Residual ripple	10 %
Reference value	4 - 20 mA
Analog output signal range	4 - 20 mA
Precision analog output in \pm %FS	2 %FS
Max. electrical power consumption	1 W
Reverse polarity protection	for all electrical connections
Short-circuit protection	For all electrical connections
Safety instructions	VEAA/VEAB safety position: if the electrical power supply is lost, the outlet pressure is maintained in uncontrolled form, it may increase or fall – pneumatic valve blocked.
Display type	LED
Electrical connection	4-pin M8x1 Plug as per EN 60947-5-2
Housing material	PA-reinforced