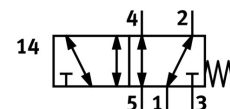



Front panel valve SV-5-M5-B

Part number: 11914

FESTO



 General operating condition

Data sheet

Feature	Value
Valve function	5/2, monostable
Actuation type	Manual
Standard nominal flow rate	95 l/min
Operating pressure	0 MPa ... 0.8 MPa
Operating pressure	0 bar ... 8 bar
Structural design	Poppet valve with return spring
Reset method	Mechanical spring
Nominal width	2.3 mm
Sealing principle	Soft
Mounting position	Any
Type of control	Direct
Symbol	00991339
Lap	Overlap
Explosion prevention and protection	Zone 1 (ATEX) Zone 2 (ATEX) Zone 21 (ATEX) Zone 22 (ATEX)
Operating medium	Compressed air as per ISO 8573-1:2010 [-:~:-]
LABS (PWIS) conformity	VDMA24364-B1/B2-L
Ambient temperature	-10 °C ... 60 °C
Actuating force	17 N
Product weight	53 g
Type of mounting	Front panel mounting With through-hole
Pneumatic connection 1	M5
Seals material	NBR
Housing material	Polymer Brass