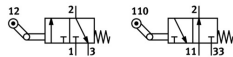


# Toggle lever valve with idle return L/O-3-PK-3

Part number: 10749

FESTO



[General operating condition](#)

## Data sheet

Feature	Value
Valve function	3/2, open/closed, monostable
Actuation type	Mechanical
Standard nominal flow rate	80 l/min
Pneumatic working port	PK-3
Operating pressure	0 bar ... 8 bar
Structural design	Piston seat
Nominal width	2.5 mm
Type of control	Direct
Symbol	00991833
Operating medium	Compressed air as per ISO 8573-1:2010 [-:-:-]
LABS (PWIS) conformity	VDMA24364-B1/B2-L
Ambient temperature	-10 °C ... 60 °C
Actuation force in initial position closed	10 N
Actuation force in initial position open	13 N
Product weight	19 g
Type of mounting	With through-hole
Pneumatic connection 1	PK-3
Pneumatic connection 2	PK-3
Pneumatic connection 3	PK-3
Seals material	NBR
Housing material	POM