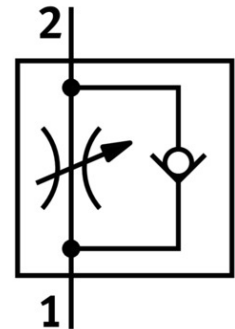
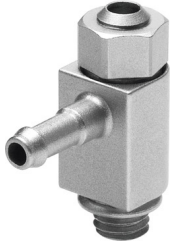


# One-way flow control valve GRLA-M5-PK-3-B

Part number: 151161

FESTO



[PDF](#) General operating condition

## Data sheet

Feature	Value
Valve function	Exhaust air flow control non-return function
Pneumatic connection 1	PK-3
Pneumatic connection 2	M5
Adjusting element	Slotted screw
Type of mounting	Screw-in
Standard nominal flow rate in flow control direction	83 l/min
Standard nominal flow rate in non-return direction	72 l/min ... 83 l/min
Operating pressure	0.2 bar ... 10 bar
Ambient temperature	-10 °C ... 60 °C
Maritime classification	See certificate
Explosion prevention and protection	Observe the information on the certificate Zone 1 (ATEX) Zone 2 (ATEX) Zone 21 (ATEX) Zone 22 (ATEX)
Mounting position	Any
Symbol	00991452
Standard flow rate in flow control direction 6 -> 0 bar	140 l/min
Standard flow rate in non-return direction at 6 -> 0 bar	120 l/min ... 140 l/min
Operating medium	Compressed air as per ISO 8573-1:2010 [7:4:4]
Information on operating and pilot media	Operation with oil lubrication possible (required for further use)
LABS (PWIS) conformity	VDMA24364-B1/B2-L
Cleanroom class	Class 4 according to ISO 14644-1
Temperature of medium	-10 °C ... 60 °C
Nominal width	2 mm
Max. tightening torque	1.5 Nm
Product weight	10 g
Material of screwed plug	Nickel-plated
Note on materials	RoHS-compliant
Seals material	NBR

Feature	Value
Material of adjusting screw	Brass
Swivel joint material	Die-cast zinc