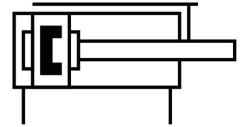
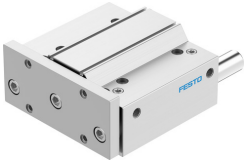


# Guided actuator DFM-100-125-P-A-GF

Part number: 170896

FESTO



 [General operating condition](#)

## Data sheet

Feature	Value
Distance of centre of gravity of payload to yoke plate xs	125 mm
Stroke	125 mm
Piston diameter	100 mm
Drive unit operating mode	Yoke
Cushioning	Elastic cushioning rings/pads at both ends
Mounting position	Any
Guide	Sliding guide
Structural design	Guide
Position sensing	For proximity sensor
Symbol	00991737
Operating pressure	0.05 MPa ... 1 MPa
Operating pressure	0.5 bar ... 10 bar
Max. speed	0.4 m/s
Mode of operation	Double-acting
Operating medium	Compressed air as per ISO 8573-1:2010 [7:4:4]
Information on operating and pilot media	Operation with oil lubrication possible (required for further use)
Corrosion resistance class (CRC)	1 - Low corrosion stress
LABS (PWIS) conformity	VDMA24364-B1/B2-L
Ambient temperature	-20 °C ... 80 °C
Impact energy in the end positions	1 J
Max. force Fy	3640 N
Max. force Fy static	3640 N
Max. force Fz	3640 N
Max. force Fz static	3640 N
Max. torque Mx	342.2 Nm
Max. static moment Mx	342.2 Nm
Max. torque My	205.7 Nm
Max. static moment My	205.7 Nm
Max. torque Mz	205.7 Nm
Max. static moment Mz	205.7 Nm
Max. permissible torque load Mx as a function of the stroke	63.14 Nm
Max. payload as a function of the stroke at defined distance xs	494 N
Theoretical force at 6 bar, retracting	4418 N
Theoretical force at 6 bar, advancing	4712 N
Moving mass	9000 g
Product weight	17094 g

Feature	Value
Alternative connections	See product drawing
Pneumatic connection	G3/8
Note on materials	RoHS-compliant
Cover material	Wrought aluminum alloy
Seals material	NBR
Housing material	Wrought aluminum alloy
Piston rod material	High-alloy stainless steel