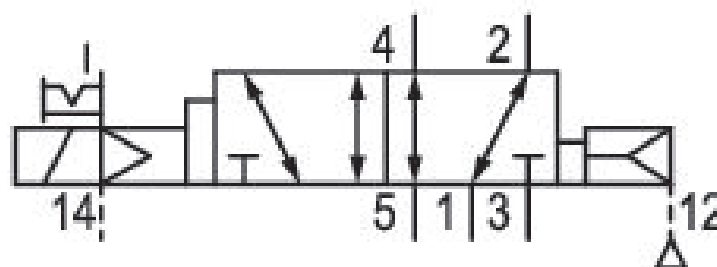


# 5/2-directional valve, Series 581, size 2

## 5812612400

ISO 5599-1, size 2, series 581

■  $Q_n = 2100 \dots 2700 \text{ l/min}$



### Technical data

Industry

Industrial

Activation

Electrically

Nominal flow  $Q_n$

2700 l/min

Switching principle

5/2

Compressed air connection output

Base plate ISO 5599-1

Working pressure min.

-0.95 bar

Working pressure max

10 bar

Operational voltage AC at 50 Hz

230 V

Voltage tolerance AC 50 Hz

-10% / +10%

Manual override

with detent

Electrical connection type

Plug

Electrical connection size

Form B, industry

Sealing principle

Soft Seal

Pilot

External

### Standards

ISO 5599-1

### Pilot valve width

22 mm

### Valve type

Spool valve

### Blocking principle

Single base plate principle

### Connection type

Plate connection

### Return

with air spring return

### Compressed air connection input

Base plate ISO 5599-1

### Compressed air connection, exhaust

Base plate ISO 5599-1

### Compressed air connection pilot exhaust

M5

### Holding power AC 50 Hz

8 VA

### Switch-on power AC 50 Hz

10 VA

### Flow conductance C

10.8 l/(s\*bar)

### Frame size

ISO 2

### Control pressure min.

2.7 bar

### Control pressure max.

10 bar

### Min. ambient temperature

-15 °C

### Max. ambient temperature

50 °C

### Min. medium temperature

-15 °C

### Max. medium temperature

50 °C

### Medium

Compressed air

### Max. particle size

50 µm

### Oil content of compressed air min.

0 mg/m<sup>3</sup>

### Oil content of compressed air max.

5 mg/m<sup>3</sup>

### Protection class with connection

IP65

### Duty cycle

100 %

### Typ. switch-on time

12 ms

### Typ. switch-off time

30 ms

### mounting screws

with hexagon socket

### Mounting screw tightening torque

3.5 Nm

### Weight

0.34 kg

### Housing material

Polyamide fiber-glass reinforced

### Seal material

Acrylonitrile butadiene rubber

### Part No.

5812612400

## Technical information

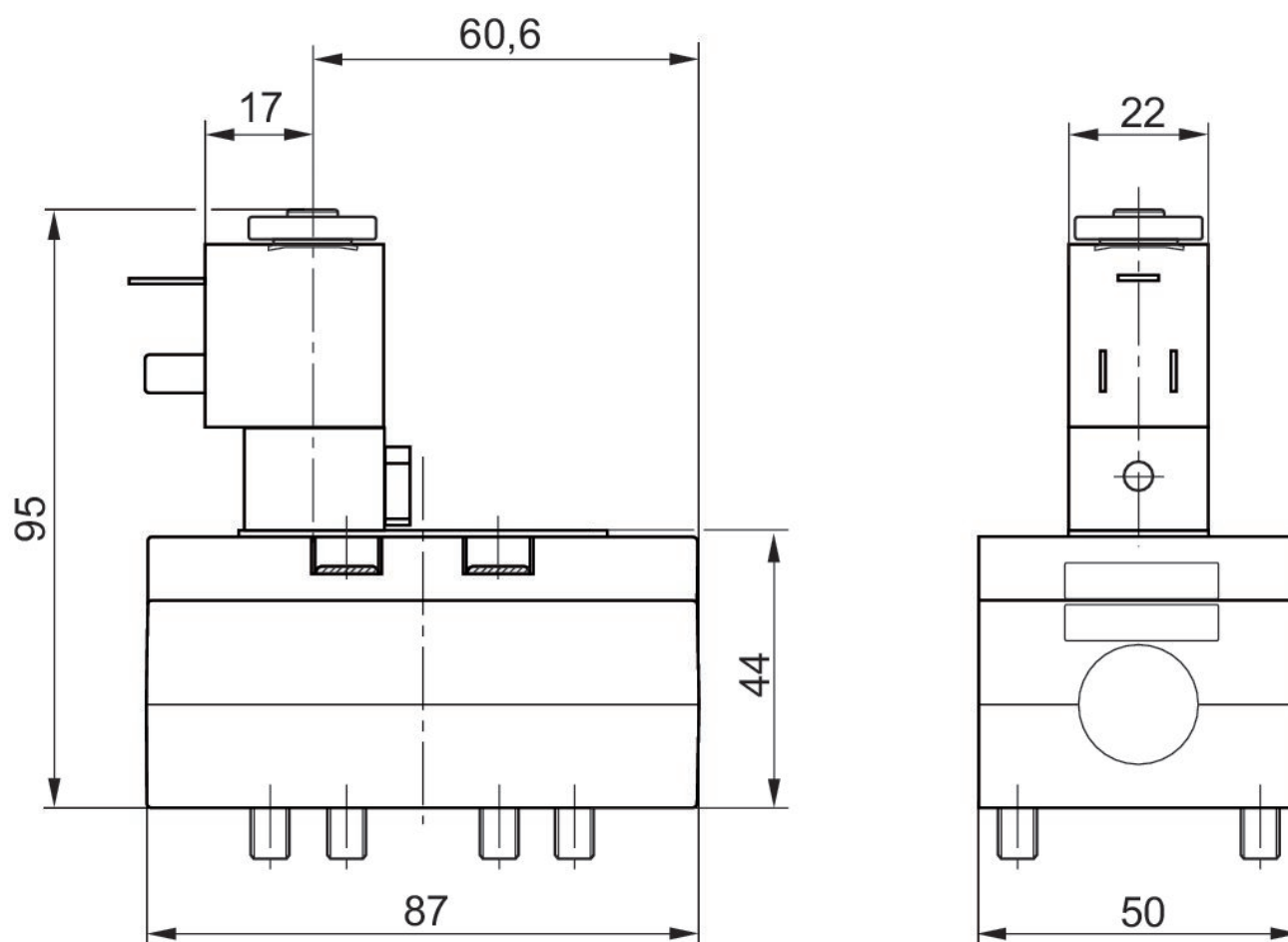
The min. control pressure must be adhered to, since otherwise faulty switching and valve failure may result!

The pressure dew point must be at least 15 °C under ambient and medium temperature and may not exceed 3 °C .

The oil content of compressed air must remain constant during the life cycle.

Use only the approved oils from AVENTICS. Further information can be found in the "Technical information" document (available in <https://www.emerson.com/en-us/support>).

## Dimensions



The pilot valves can be loosened and turned through 180°.