

3/2-directional valve, Series A-Pilotair®

R431007396

General series information
AVENTICS Series A-Pilotair Directional valves

■ manually operated



Technical data

Industry

Type

Activation

Nominal flow Qn

Compressed air connection output

Working pressure min.

Working pressure max

Sealing principle

Type

Type

Control pressure min.

Control pressure max.

Min. ambient temperature

Max. ambient temperature

Min. medium temperature

Max. medium temperature

Medium

Oil content of compressed air min.

Industrial

Triple (2-HA-3), 3-way valves - 5-position gated single handle

Manual

1308.72 l/min

Ø 1/4"

0 bar

13.7 bar

Soft Seal

Poppet valve

2-HA-3

0 bar

17.2 bar

-40 °C

71 °C

-40 °C

71 °C

Compressed air

0 mg/m³

Oil content of compressed air max.	1 mg/m ³
Max. particle size	50 µm
Compressed air connection input	Ø 1/4"
Weight	1.81 kg
Housing material	Die-cast aluminum
Part No.	R431007396

Technical information

The 2-HA-3 and 2-HA-4 models are an extension of the 2-HA-2 models. They were created to furnish a housing that will operate up to four 3-way valves to provide a variety of functions.

These valves were designed primarily for use with multi position cylinders for Transmission Controls. They also meet the application requirements for two different supply pressures, selector functions and directional control of up to four different circuits.

Double handle assemblies are provided for space conservation and for applications requiring two handles located adjacent to each other. Thus, two different functions can be controlled. As an example, the left handle can control direction (forward or reverse) and the right handle, range (1st, 2nd, 3rd and 4th gear).

The min. control pressure must be adhered to, since otherwise faulty switching and valve failure may result!

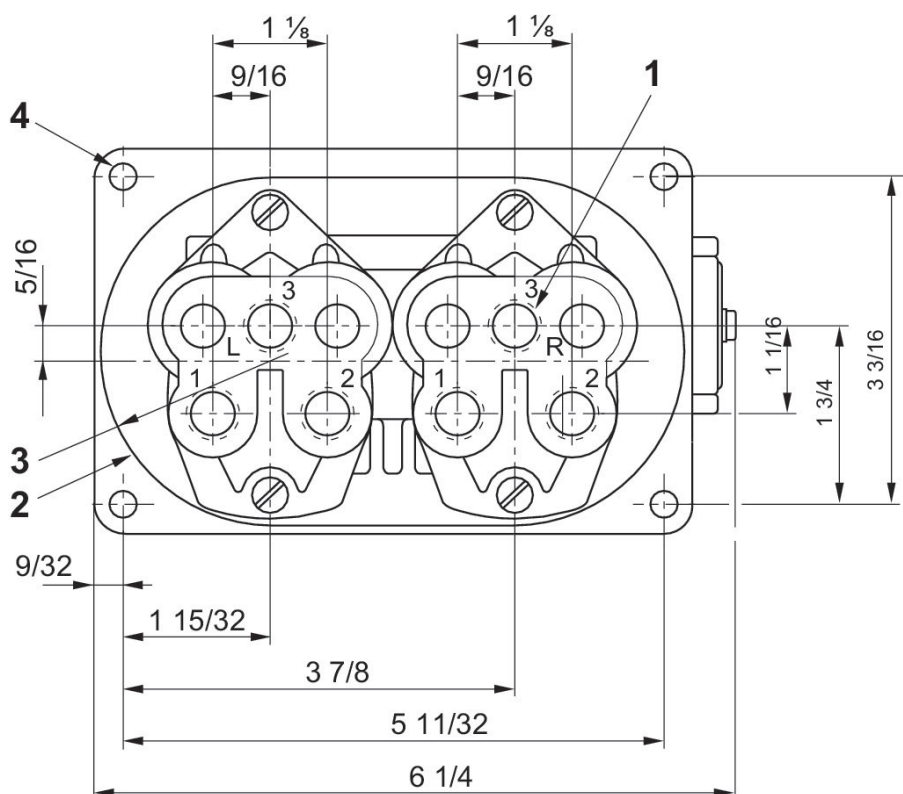
The pressure dew point must be at least 15 °C less than ambient and medium temperature and may not exceed 3 °C.

The oil content of compressed air must remain constant during the life cycle.

Use only the approved oils from AVENTICS. Further information can be found in the "Technical information" document (available in <https://www.emerson.com/en-us/support>).

Technical drawing of the 1000 Series 2-Drawer Cabinet showing dimensions:

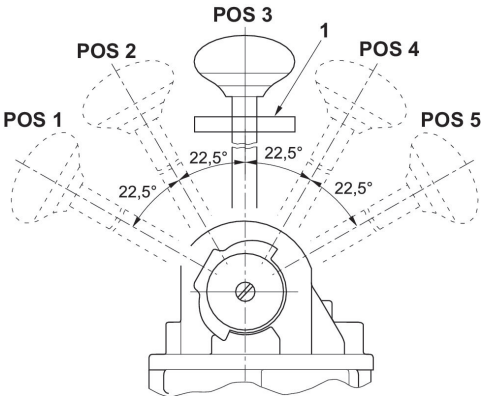
- Overall height: $6 \frac{11}{16}$
- Overall width: $5 \frac{23}{32}$
- Drawer height: $2 \frac{1}{32}$
- Drawer depth: $1 \frac{1}{4}$
- Labels: L (Left), R (Right)



- 

3) 1/4 - 18 NPTF 6 ports
4) 9/32 diameter (4) places

3-position handle, detented



Spring return to position 3 special handle latch at position 3 - 22 1/2° lever path between positions

Handle position		1	2	3	4	5
Out Port Supplied	OUT port 1L	Plugged	Plugged	Plugged	Plugged	Plugged
Out Port Supplied	OUT port 2L	X	X		X	X
Out Port Supplied	OUT port 1R	X				
Out Port Supplied	OUT port 2R					X