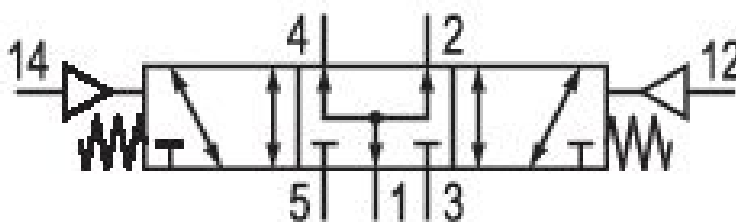


# 5/3-directional valve, Series IS12, size 2

## 0820228103

ISO 5599-1, size 2, series IS12

■  $Q_n = [[1700 \dots 2500] \text{ l/min}]$



### Technical data

Industry

Industrial

Activation

Pneumatically

Nominal flow  $Q_n$

1800 l/min

Compressed air connection output

Base plate ISO 5599-1

Connection type

Plate connection

Working pressure min.

-0.9 bar

Working pressure max

10 bar

Sealing principle

Soft Seal

Standards

ISO 5599-1

Valve type

Spool valve, positive overlapping

Version

ISO 2

Pilot

External

Blocking principle

Single base plate principle

Control pressure min.

2.8 bar

Control pressure max. 10 bar	Compressed air connection Base plate ISO 5599-1
Min. ambient temperature 0 °C	Compressed air connection input Base plate ISO 5599-1
Max. ambient temperature 80 °C	Mounting screw M6 with hexagon socket
Min. medium temperature 0 °C	Mounting screw tightening torque 4 Nm
Max. medium temperature 80 °C	Weight 0.51 kg
Medium Compressed air	Housing material Polyamide
Max. particle size 5 µm	Seal material Acrylonitrile butadiene rubber
Oil content of compressed air min. 0 mg/m <sup>3</sup>	Material, front cover Polyamide
Oil content of compressed air max. 5 mg/m <sup>3</sup>	Part No. 0820228103
version pneumatic port Pressurized Center	

## Technical information

The min. control pressure must be adhered to, since otherwise faulty switching and valve failure may result!

The pressure dew point must be at least 15 °C under ambient and medium temperature and may not exceed 3 °C .

The oil content of compressed air must remain constant during the life cycle.

Use only the approved oils from AVENTICS. Further information can be found in the “Technical information” document (available in <https://www.emerson.com/en-us/support>).

## Dimensions

